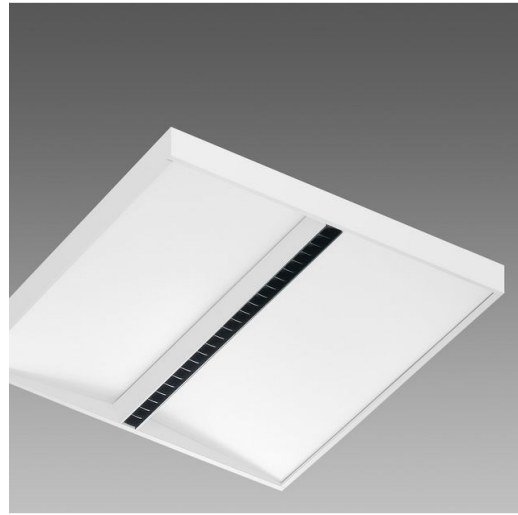
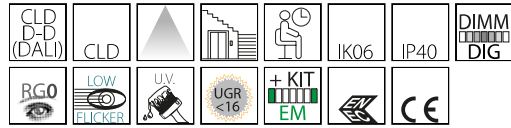


## 716 - Ibis - UGR<16

Code: 114024-3941



Working and studying in the right light has a positive impact on mood and productivity. Ibis is the ceiling lighting fixture for offices and lecture rooms that ensures maximum visual wellbeing in any given application, thanks to soft, well-distributed light.

It blends harmoniously into new systems, thanks to its clean-cut and elegant design, and can replace effectively old lamps, ensuring substantial energy savings.



### GENERAL INFORMATION

Article	716 - Ibis - UGR<16
Code	114024-3941

### DIMENSIONS AND WEIGHT

Length (mm)	600 mm
Width (mm)	600 mm
Height (mm)	70 mm
Weight (Kg)	5.7 kg

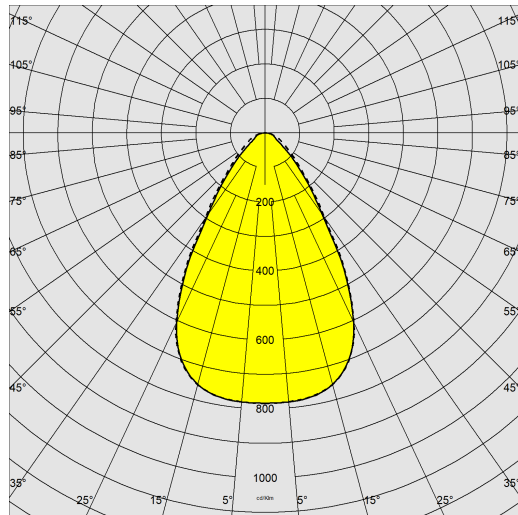
### ELECTRICAL CHARACTERISTICS AND CONTROLS

Voltage type	AC
Min Voltage (V)	220 V
Max Voltage (V)	240 V
Min Frequency (Hz)	50 Hz
Max Frequency (Hz)	60 Hz
Frequency (Hz)	50 Hz
Wiring name	CLD-D-D
Control interface	DALI
Power factor	≥0.9
Insulation class	Class I
Controllability	Yes (External control)

## 716 - Ibis - UGR<16

Code: 114024-3941

### PHOTOMETRIC DATA



Lighting source	LED
CRI	90
Luminous flux (output) (lm)	3036 lm
Power absorption (total) (W)	33 W
CCT	3000 K
Luminous efficacy (lm/W)	92 lm/W
Unified glare rating UGR (EN 12464-1) (Reflectance coefficient: ceiling 0.7 - walls 0.5)	UGR<16, according to standard EN 12464.
Low Flicker	luminaire with very low flicker: evenly distributed light for greater visual safety.
LED flux maintenance	50000 hr, L 90, B 10

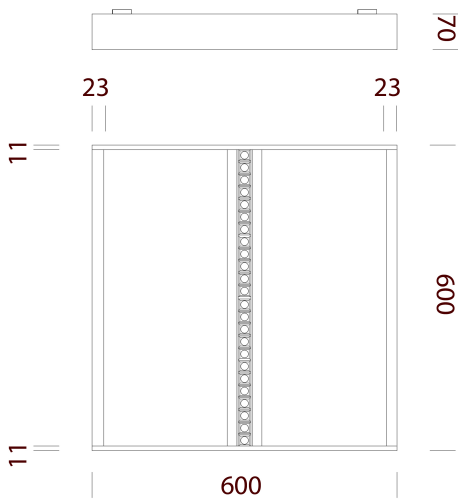
### MECHANICAL CHARACTERISTICS

Impact resistance rating (IK)	IK06
IP	40



## 716 - Ibis - UGR<16

Code: 114024-3941



### DOWNLOAD

#### MOUNTS

[AssemblyInstructions EM-KIT 600 03-22.pdf](#)

[AssemblyInstructions 716 05-22.pdf](#)

#### DESIGNS

[BIM 716 Ibis - UGR16](#)

[TechnicalDrawing 716v.dxf](#)



### MATERIALS AND COLOURS

Housing	in pressed steel sheet.
Optics	dark light honeycomb structure with PMMA lens to minimise glare.
Diffuser	in high transmittance prismatic technopolymer. Internal PMMA slab.
Coating	epoxy polyester powder coating resistant to UV rays.
Colour	White

### STANDARDS AND COMPLIANCE

Photobiological safety class	RG0
Markings and tests	CE, ENEC
Reference standards	EN60598-1. With degree of protection according to EN60529.
Energy Label	F

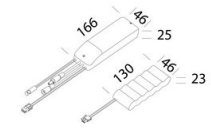
### WARRANTY

After sales warranty	5 yr
----------------------	------

## 716 - Ibis - UGR<16

---

Code: 114024-3941



**600 EM power supply kit**