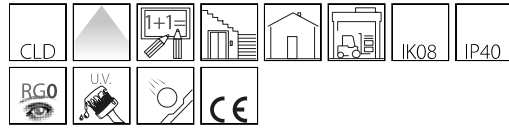


601 - Disanlens - CAN ACCEPT LED TUBES

Code: 115572-03

GENERAL INFORMATION



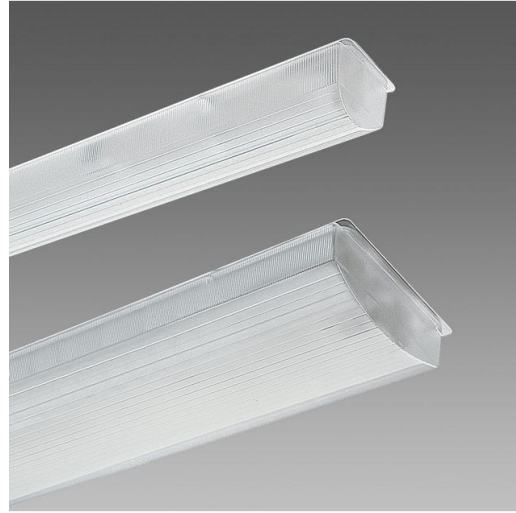
Article	601 - Disanlens - CAN ACCEPT LED TUBES
Code	115572-03

DIMENSIONS AND WEIGHT

Length (mm)	665 mm
Width (mm)	200 mm
Height (mm)	78 mm
Weight (Kg)	1.5 kg

ELECTRICAL CHARACTERISTICS AND CONTROLS

Voltage type	AC
Min Voltage (V)	220 V
Max Voltage (V)	240 V
Frequency (Hz)	50 Hz
Wiring name	CLD-S
Power factor	≥0
Insulation class	Class I
Controllability	None



601 Disanlens is a ceiling-mounted luminaire designed to be completed with LED tubes, offering a practical and versatile lighting solution. Its essential structure ensures easy installation and maintenance, making it suitable for residential, commercial and professional environments. Ideal for spaces requiring uniform and efficient illumination, 601 Disanlens combines functionality, reliability and configuration flexibility.



601 - Disanlens - CAN ACCEPT LED TUBES

Code: 115572-03

PHOTOMETRIC DATA

Lighting source	LED TUBE 2x10
CCT	0 K
LED flux maintenance	0 hr, L 0, B 0

MECHANICAL CHARACTERISTICS

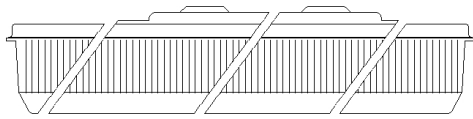
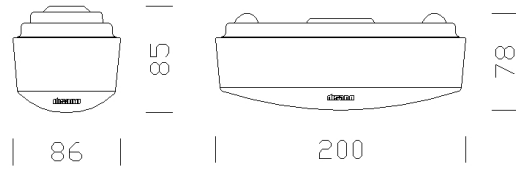
Impact resistance rating (IK)	IK08
IP	40



601 - Disanlens - CAN ACCEPT LED TUBES

Code: 115572-03

MATERIALS AND COLOURS



652/665-1262/1273-1573

DOWNLOAD

MOUNTS

[AssemblyInstructions disanlens 01-07.pdf](#)

DESIGNS

[TechnicalDrawing d601 1.dxf](#)



Housing	in pressed steel sheet.
Optics	steel, white, UV-stabilised.
Diffuser	in polycarbonate, transparent, internally microprismatic, anti-glare, shatterproof and V2 self-extinguishing, UV stabilised. Externally smooth and anti-dust.
Colour	White
Equipment	with G13 lamp holder designed to enable direct connection to 230Vac LED lamps.

EMERGENCY LIGHTING

Emergency power supply type	Not present
-----------------------------	-------------

STANDARDS AND COMPLIANCE

Photobiological safety class	RG0
Markings and tests	CE
Reference standards	EN60598-1. They have a degree of protection according to the EN60529 standard.

WARRANTY

After sales warranty	3 yr
----------------------	------