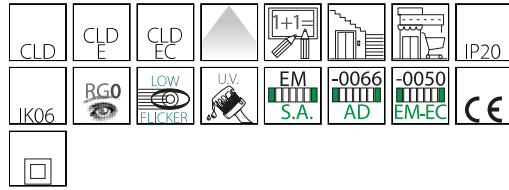


602 - Disanlens

Code: 115598-00

GENERAL INFORMATION



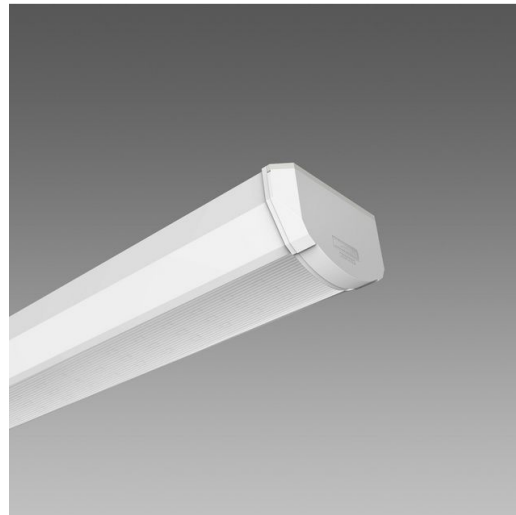
Article	602 - Disanlens
Code	115598-00

DIMENSIONS AND WEIGHT

Length (mm)	1250 mm
Width (mm)	133 mm
Height (mm)	75 mm
Weight (Kg)	2.7 kg

ELECTRICAL CHARACTERISTICS AND CONTROLS

Voltage type	AC
Min Voltage (V)	220 V
Max Voltage (V)	240 V
Min Frequency (Hz)	50 Hz
Max Frequency (Hz)	60 Hz
Frequency (Hz)	50 Hz
Wiring name	CLD
Power factor	≥0.9
Insulation class	Class II
Controllability	None



Major updates have been made in some of the group's most popular indoor lighting fixtures. The new Disanlens ceiling light is the ideal solution for relamping all environments where it is important to allow optimal light diffusion for maximum visual comfort. Thanks to its new, original design for use in large retail outlets or in offices and schools, Disanlens is the best choice for optimal light diffusion.

LED light sources ensure energy savings of more than 30% compared to conventional T5 lamps and even more than 60% compared to T8 lamps.

With a lifespan of 50,000 hours, Disanlens best meets the needs of installations that stay on most of the day.

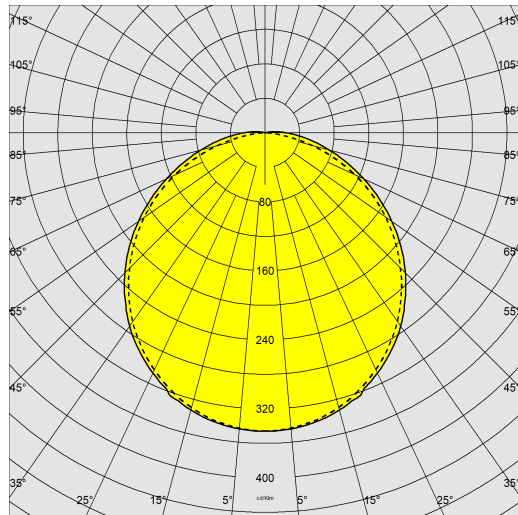
With the new Disanlens fixtures, schools, offices and healthcare facilities can upgrade their lighting system, saving energy and increasing light quality. This ceiling light is manufactured according to the best technology and with state-of-the-art LEDs.



602 - Disanlens

Code: 115598-00

PHOTOMETRIC DATA



Lighting source	LED
CRI	80
Luminous flux (output) (lm)	3440 lm
Power absorption (total) (W)	28 W
CCT	4000 K
Luminous efficacy (lm/W)	123 lm/W
LED flux maintenance	50000 hr, L 90, B 10

MECHANICAL CHARACTERISTICS

Impact resistance rating (IK)	IK06
IP	20



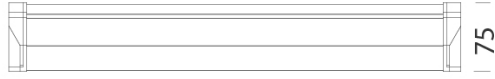
602 - Disanlens

Code: 115598-00

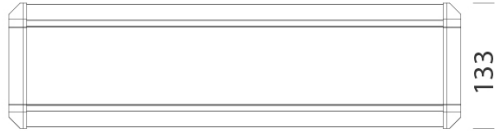
MATERIALS AND COLOURS



650/1250



75



133

DOWNLOAD

MOUNTS

[AssemblyInstructions disanlensip20 03-23.pdf](#)

DESIGNS

[BIM 602 Disanlens 03-25.zip](#)

[TechnicalDrawing 602led.dxf](#)



Housing	in extruded aluminium with end caps.
Diffuser	in polycarbonate, shatterproof and V2 self-extinguishing, UV stabilised. Externally smooth and anti-dust, internally multi-grooved to increase light diffusion.
Coating	polyester powder coated, UV-stabilised, anti-yellowing, phosphate pre-treatment.
Colour	White
Equipment	in silicone rubber; external stainless steel screws.

EMERGENCY LIGHTING

Emergency power supply type	Not present
-----------------------------	-------------

STANDARDS AND COMPLIANCE

Photobiological safety class	RG0
Markings and tests	CE
Reference standards	EN60598-1. They have a degree of protection according to the EN60529 standard.
Energy Label	B

WARRANTY

After sales warranty	3 yr
----------------------	------

602 - Disanlens

Code: 115598-00

