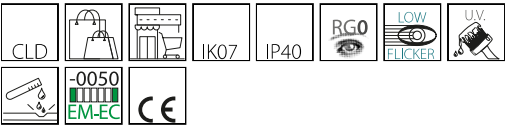


6612 - Techno System - SINGLE - asymmetric 25° - CRI 80

Code: 133014-00



Its simple, modern design blends perfectly into any space. It is 1421-mm long (but can be requested in 575/1139/1703/2267/2831/3395 mm), and comes in many versions. The new Techno System has a wide range of optics with different LEDs. This makes it possible to select the most suitable luminaire for any design while achieving the required light levels at lower energy consumption.



GENERAL INFORMATION

|         |   |
|---------|---|
| Article | 6612 - Techno System - SINGLE - asymmetric 25° - CRI 80 |
| Code    | 133014-00   |

DIMENSIONS AND WEIGHT

|             |         |
|-------------|---------|
| Length (mm) | 1421 mm |
| Width (mm)  | 60 mm   |
| Height (mm) | 52 mm   |
| Weight (Kg) | 1.5 kg  |

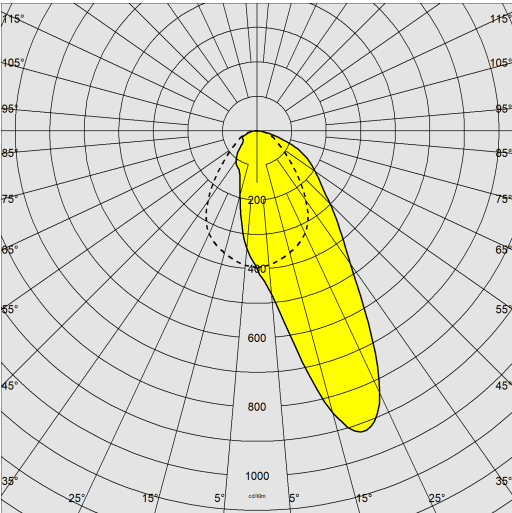
ELECTRICAL CHARACTERISTICS AND CONTROLS

|                    |         |
|--------------------|---------|
| Voltage type       | AC      |
| Min Voltage (V)    | 220 V   |
| Max Voltage (V)    | 240 V   |
| Min Frequency (Hz) | 50 Hz   |
| Max Frequency (Hz) | 60 Hz   |
| Frequency (Hz)     | 50 Hz   |
| Wiring name        | CLD     |
| Power factor       | ≥0.95   |
| Insulation class   | Class I |
| Controllability    | None    |

6612 - Techno System - SINGLE - asymmetric 25° - CRI 80

Code: 133014-00

PHOTOMETRIC DATA



|                              |  |
|------------------------------|--|
| Distribution type            | Asymmetric   |
| Lighting source              | LED  |
| CRI                          | 80   |
| Luminous flux (output) (lm)  | 4567 lm  |
| Power absorption (total) (W) | 29 W   |
| CCT                          | 4000 K   |
| Luminous efficacy (lm/W)     | 157 lm/W   |
| Low Flicker                  | luminaire with very low flicker: evenly distributed light for greater visual safety. |
| Asymmetry degrees            | 25 °   |
| LED flux maintenance         | 80000 hr, L 90, B 10   |

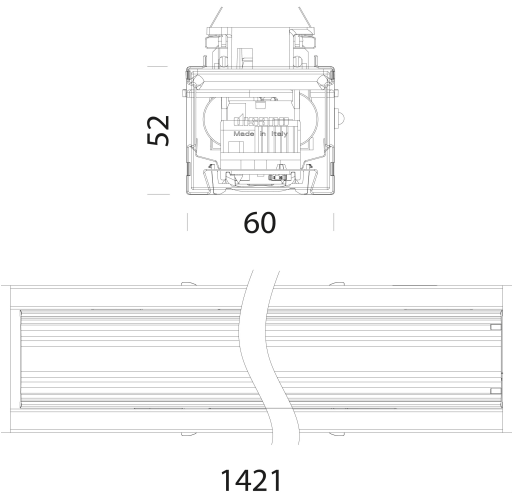
MECHANICAL CHARACTERISTICS

|                               |      |
|-------------------------------|------|
| Impact resistance rating (IK) | IK07 |
| IP                            | 40   |



6612 - Techno System - SINGLE - asymmetric 25° - CRI 80

Code: 133014-00



DOWNLOAD

MOUNTS

AssemblyInstructions technosystem 01-25.pdf

DESIGNS

BIM 6612 Techno System 02-25.zip

TechnicalDrawing technosystem.dxf



MATERIALS AND COLOURS

|           |   |
|-----------|---|
| Housing   | in galvanized rolled steel, with anti-cutting turned-up edges and ABS end caps.   |
| Optics    | in high-performance PMMA resistant to high temperatures and UV rays.  |
| Coating   | pre-painted in oven with polyester resin, UV-stabilised, phosphate pre-treatment.   |
| Colour    | White   |
| Equipment | designed as standard for 5-pole, 7-pole (EMergency or DIMMerable DALI versions) and 11-pole (EMergency and DIMMerable DALI versions) wiring. External fastening system for attachment to the channel. |

STANDARDS AND COMPLIANCE

|                              |   |
|------------------------------|---|
| Photobiological safety class | RG0   |
| Markings and tests           | CE, ENEC  |
| Reference standards          | EN60598-1. With degree of protection according to EN60529. The lighting fixture meets all IFS and BRC requirements, and the regulation of the HACCP Directive regarding lighting systems installed in food processing plants. |
| Energy Label                 | C   |

GEAR

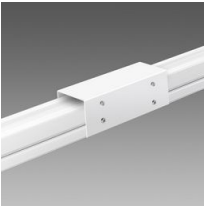
|              |  |
|--------------|--|
| Upon request | <ul style="list-style-type: none"><li>- phase selector switch with up to 11 conductors</li><li>- 3000K-6500K versions</li><li>- versions for FOOD industry (Red Meat, Marbled Meat, Fish, Bread, Pastries and Produce)</li><li>- CLD-EC wiring for centrally powered emergency lighting, subcode -0050</li><li>- version with subcode -0059 designed for direct replacement of Rapid System FL series ceiling lights.</li><li>- version with subcode -42 for installation directly on the ceiling.</li></ul> |
|--------------|--|

WARRANTY

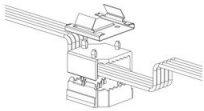
|                      |      |
|----------------------|------|
| After sales warranty | 5 yr |
|----------------------|------|

**6612 - Techno System - SINGLE - asymmetric 25° - CRI 80**

Code: 133014-00



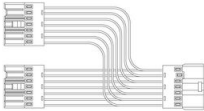
**6011 Safety joint**



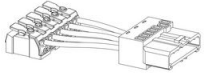
**6620 Selector switch**



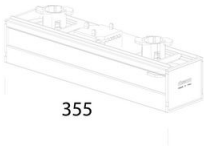
**6621 Electrified joint**



**6622 Electrified T joint**



**6623 Power supply**



**6624 Selector switch cover**



**6052 Suspension for chain**



**6053 Suspension for cable**



**6510 Simple suspension**



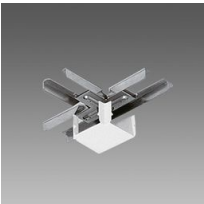
**6512 Wire**



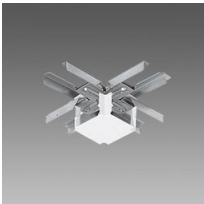
**6010 Linear joint**



**6015 Angle joint**



**6020 T-joint**



**6025 X-joint**

**6612 - Techno System - SINGLE - asymmetric 25° - CRI 80**

Code: 133014-00

