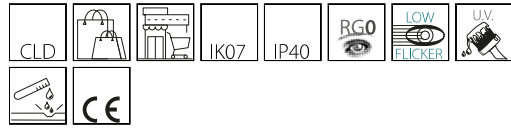


6612 - Techno System HE - asymmetric 25° - CRI 80

Code: 133015-00

GENERAL INFORMATION



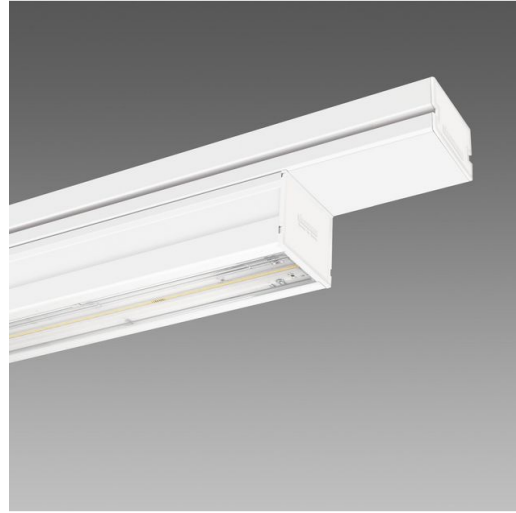
Article	6612 - Techno System HE - asymmetric 25° - CRI 80
Code	133015-00

DIMENSIONS AND WEIGHT

Length (mm)	1421 mm
Width (mm)	60 mm
Height (mm)	52 mm
Weight (Kg)	1.7 kg

ELECTRICAL CHARACTERISTICS AND CONTROLS

Voltage type	AC
Min Voltage (V)	220 V
Max Voltage (V)	240 V
Min Frequency (Hz)	50 Hz
Max Frequency (Hz)	60 Hz
Frequency (Hz)	50 Hz
Wiring name	CLD
Power factor	≥0.95
Insulation class	Class I
Controllability	None



Its simple, modern design blends perfectly into any space. It is 1421-mm long (but can be requested in 575/1139/1703/2267/2831/3395 mm), and comes in many versions.

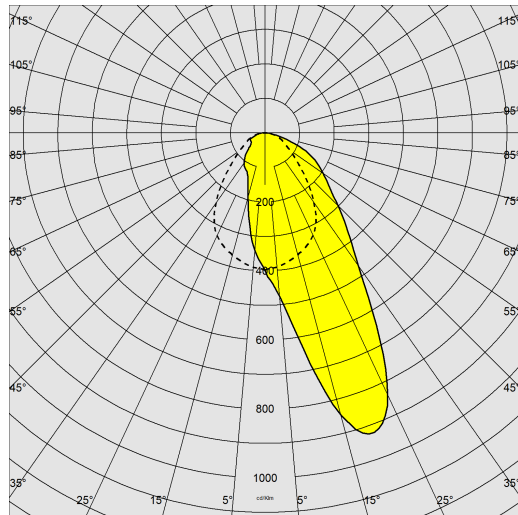
The new Techno System has a wide range of optics with different LEDs. This makes it possible to select the most suitable luminaire for any design while achieving the required light levels at lower energy consumption.



6612 - Techno System HE - asymmetric 25° - CRI 80

Code: 133015-00

PHOTOMETRIC DATA



Distribution type	Asymmetric
Lighting source	LED
CRI	80
Luminous flux (output) (lm)	8191 lm
Power absorption (total) (W)	58 W
CCT	4000 K
Luminous efficacy (lm/W)	141 lm/W
Low Flicker	luminaire with very low flicker: evenly distributed light for greater visual safety.
Asymmetry degrees	25 °
LED flux maintenance	50000 hr, L 90, B 10

MECHANICAL CHARACTERISTICS

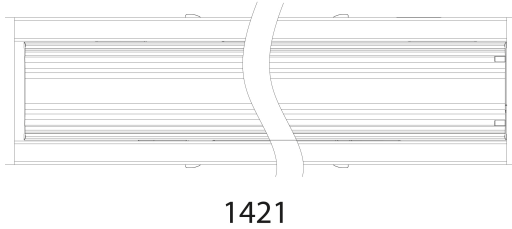
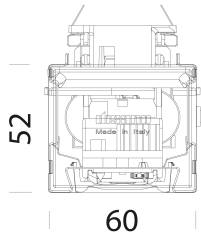
Impact resistance rating (IK)	IK07
IP	40



6612 - Techno System HE - asymmetric 25° - CRI 80

Code: 133015-00

MATERIALS AND COLOURS



DOWNLOAD

MOUNTS

[AssemblyInstructions techno system 01-23.pdf](#)

DESIGNS

[BIM 6612 Techno System HE.zip](#)

[TechnicalDrawing technosystem.dxf](#)



Housing	in galvanized rolled steel, with anti-cutting turned-up edges and ABS end caps.
Optics	in high-performance PMMA resistant to high temperatures and UV rays.
Coating	pre-painted in oven with polyester resin, UV-stabilised, phosphate pre-treatment.
Colour	White
Equipment	designed as standard for 5-pole, 7-pole (EMergency or DIMMerable DALI versions) and 11-pole (EMergency and DIMMerable DALI versions) wiring. External fastening system for attachment to the channel.

STANDARDS AND COMPLIANCE

Photobiological safety class	RG0
Markings and tests	CE, ENEC
Reference standards	EN60598-1. With degree of protection according to EN60529. The lighting fixture meets all IFS and BRC requirements, and the regulation of the HACCP Directive regarding lighting systems installed in food processing plants.
Energy Label	C

GEAR

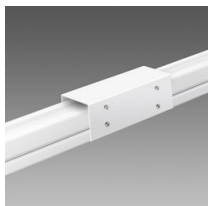
Upon request	<ul style="list-style-type: none"> - phase selector switch with up to 11 conductors - 3000K-6500K versions - versions for FOOD industry (Red Meat, Marbled Meat, Fish, Bread, Pastries and Produce) - CLD-EC wiring for centrally powered emergency lighting, subcode -0050
--------------	---

WARRANTY

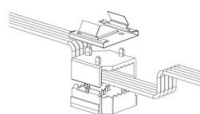
After sales warranty	5 yr
----------------------	------

6612 - Techno System HE - asymmetric 25° - CRI 80

Code: 133015-00



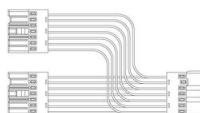
6011 Safety joint



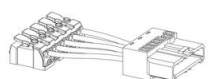
6620 Selector switch



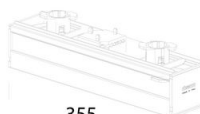
6621 Electrified joint



6622 Electrified T joint



6623 Power supply



6624 Selector switch cover

355



6052 Suspension for chain



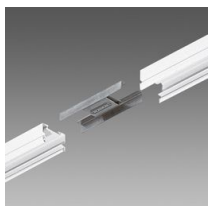
6053 Suspension for cable



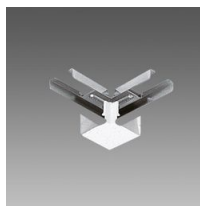
6510 Simple suspension



6512 Wire



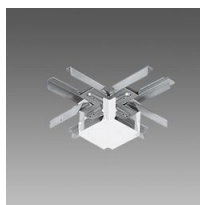
6010 Linear joint



6015 Angle joint



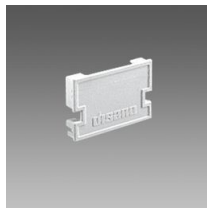
6020 T-joint



6025 X-joint

6612 - Techno System HE - asymmetric 25° - CRI 80

Code: 133015-00



6045 End cap



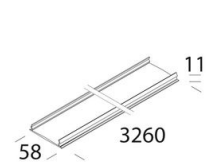
6051 Ceiling-susp. mounting



6050 Wall mount



6070 Drop-counterdrop



6005 Cover