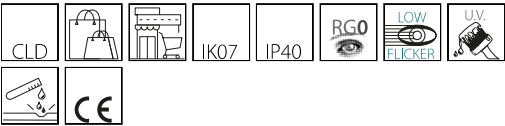


6613 - Techno System HE - bi-asymmetric 25° - CRI 80

Code: 133025-00



Its simple, modern design blends perfectly into any space. It is 1421-mm long (but can be requested in 575/1139/1703/2267/2831/3395 mm), and comes in many versions.  
The new Techno System has a wide range of optics with different LEDs. This makes it possible to select the most suitable luminaire for any design while achieving the required light levels at lower energy consumption.



GENERAL INFORMATION

Article	6613 - Techno System HE - bi-asymmetric 25° - CRI 80
Code	133025-00

DIMENSIONS AND WEIGHT

Length (mm)	1421 mm
Width (mm)	60 mm
Height (mm)	52 mm
Weight (Kg)	1.67 kg

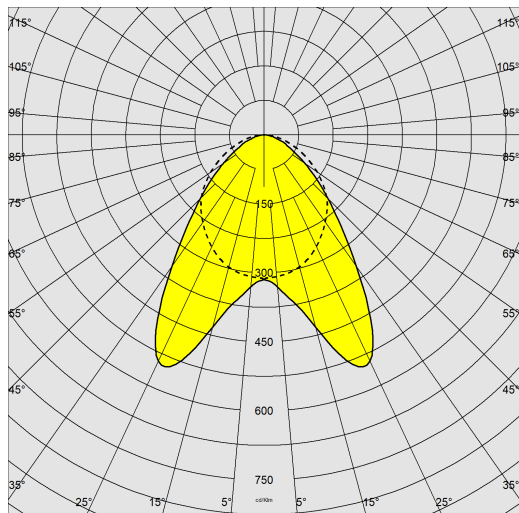
ELECTRICAL CHARACTERISTICS AND CONTROLS

Voltage type	AC
Min Voltage (V)	220 V
Max Voltage (V)	240 V
Min Frequency (Hz)	50 Hz
Max Frequency (Hz)	60 Hz
Frequency (Hz)	50 Hz
Wiring name	CLD
Power factor	≥0.95
Insulation class	Class I
Controllability	None

**6613 - Techno System HE - bi-asymmetric 25° - CRI 80**

Code: 133025-00

## PHOTOMETRIC DATA



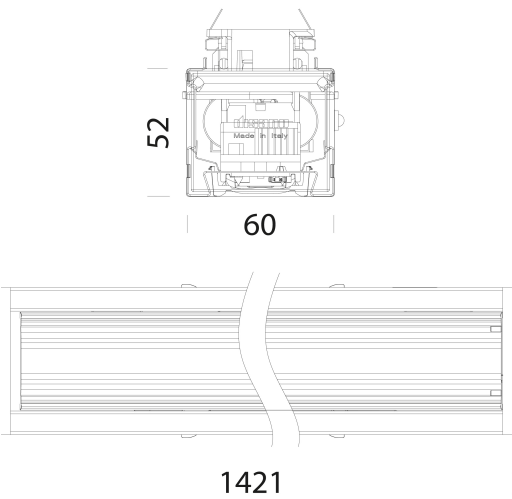
Distribution type	Bi-asymmetric
Lighting source	LED
CRI	80
Luminous flux (output) (lm)	9086 lm
Power absorption (total) (W)	58 W
CCT	4000 K
Luminous efficacy (lm/W)	157 lm/W
Low Flicker	luminaire with very low flicker: evenly distributed light for greater visual safety.
Asymmetry degrees	25 °
LED flux maintenance	50000 hr, L 85, B 10

## MECHANICAL CHARACTERISTICS

Impact resistance rating (IK)	IK07
IP	40

6613 - Techno System HE - bi-asymmetric 25° - CRI 80

Code: 133025-00



DOWNLOAD

MOUNTS

AssemblyInstructions techno system 01-23.pdf

DESIGNS

BIM 6613 Techno System HE.zip

TechnicalDrawing technosystem.dxf



MATERIALS AND COLOURS

Housing	in galvanized rolled steel, with anti-cutting turned-up edges and ABS end caps.
Optics	in high-performance PMMA resistant to high temperatures and UV rays.
Coating	pre-painted in oven with polyester resin, UV-stabilised, phosphate pre-treatment.
Colour	White
Equipment	designed as standard for 5-pole, 7-pole (EMergency or DIMMerable DALI versions) and 11-pole (EMergency and DIMMerable DALI versions) wiring. External fastening system for attachment to the channel.

STANDARDS AND COMPLIANCE

Photobiological safety class	RG0
Markings and tests	CE, ENEC
Reference standards	EN60598-1. With degree of protection according to EN60529. The lighting fixture meets all IFS and BRC requirements, and the regulation of the HACCP Directive regarding lighting systems installed in food processing plants.
Energy Label	C

GEAR

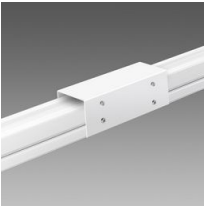
Upon request	<ul style="list-style-type: none"><li>- phase selector switch with up to 11 conductors</li><li>- 3000K-6500K versions</li><li>- versions for FOOD industry (Red Meat, Marbled Meat, Fish, Bread, Pastries and Produce)</li><li>- CLD-EC wiring for centrally powered emergency lighting, subcode -0050</li></ul>
--------------	--

WARRANTY

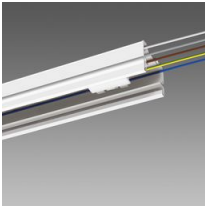
After sales warranty	5 yr
----------------------	------

**6613 - Techno System HE - bi-asymmetric 25° - CRI 80**

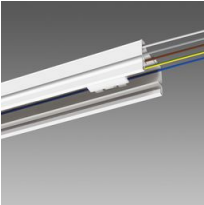
Code: 133025-00



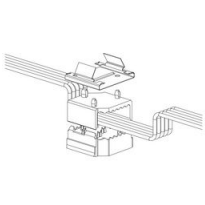
**6011 Safety joint**



**6002 Power track - not in continuous line**



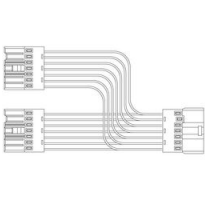
**6003 Power track - without connector**



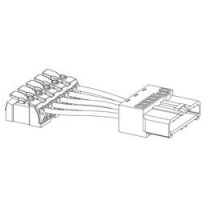
**6620 Selector switch**



**6621 Electrified joint**



**6622 Electrified T joint**



**6623 Power supply**



**6624 Selector switch cover**



**6052 Suspension for chain**



**6053 Suspension for cable**



**6510 Simple suspension**



**6512 Wire**



**6010 Linear joint**



**6015 Angle joint**

**6613 - Techno System HE - bi-asymmetric 25° - CRI 80**

Code: 133025-00

