

6604 - Techno System - wide beam 60° - CRI 90

Code: 133042-00



Its simple, modern design blends perfectly into any space. It is 1421-mm long (but can be requested in 575/1139/1703/2267/2831/3395 mm), and comes in many versions.
The new Techno System has a wide range of optics with different LEDs. This makes it possible to select the most suitable luminaire for any design while achieving the required light levels at lower energy consumption.



GENERAL INFORMATION

Article	6604 - Techno System - wide beam 60° - CRI 90
Code	133042-00

DIMENSIONS AND WEIGHT

Length (mm)	1421 mm
Width (mm)	60 mm
Height (mm)	52 mm
Weight (Kg)	1.5 kg

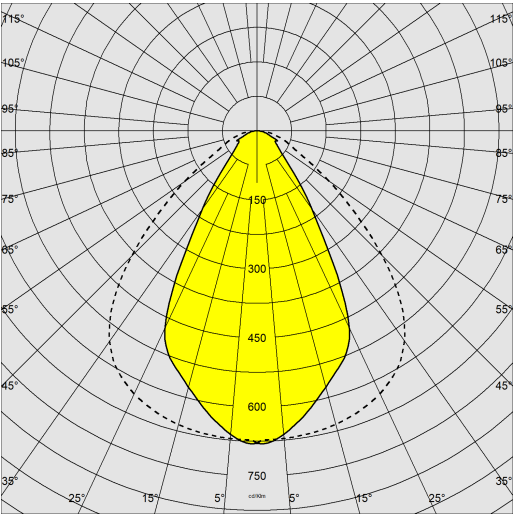
ELECTRICAL CHARACTERISTICS AND CONTROLS

Voltage type	AC
Min Voltage (V)	220 V
Max Voltage (V)	240 V
Min Frequency (Hz)	50 Hz
Max Frequency (Hz)	60 Hz
Frequency (Hz)	50 Hz
Wiring name	CLD
Power factor	≥0.95
Insulation class	Class I
Controllability	None

6604 - Techno System - wide beam 60° - CRI 90

Code: 133042-00

PHOTOMETRIC DATA



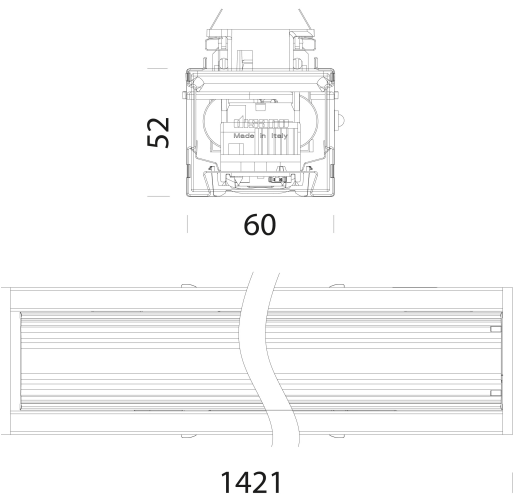
Distribution type	Symmetric wide beam
Lighting source	LED
CRI	90
Luminous flux (output) (lm)	3536 lm
Power absorption (total) (W)	34 W
CCT	4000 K
Luminous efficacy (lm/W)	104 lm/W
Low Flicker	luminaire with very low flicker: evenly distributed light for greater visual safety.
LED flux maintenance	50000 hr, L 85, B 10

MECHANICAL CHARACTERISTICS

Impact resistance rating (IK)	IK07
IP	40

6604 - Techno System - wide beam 60° - CRI 90

Code: 133042-00



DOWNLOAD

MOUNTS

AssemblyInstructions techno system 01-23.pdf

DESIGNS

BIM 6604 Techno System.zip

TechnicalDrawing technosystem.dxf

TechnicalDrawing3D disano 6604 TechnoSystem.3ds



MATERIALS AND COLOURS

Housing	in galvanized rolled steel, with anti-cutting turned-up edges and ABS end caps.
Optics	in high-performance PMMA resistant to high temperatures and UV rays.
Coating	pre-painted in oven with polyester resin, UV-stabilised, phosphate pre-treatment.
Colour	White
Equipment	designed as standard for 5-pole, 7-pole (EMergency or DIMMerable DALI versions) and 11-pole (EMergency and DIMMerable DALI versions) wiring. External fastening system for attachment to the channel.

STANDARDS AND COMPLIANCE

Photobiological safety class	RG0
Markings and tests	CE, ENEC
Reference standards	EN60598-1. With degree of protection according to EN60529. The lighting fixture meets all IFS and BRC requirements, and the regulation of the HACCP Directive regarding lighting systems installed in food processing plants.
Energy Label	C

GEAR

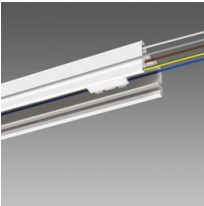
Upon request	<ul style="list-style-type: none">- phase selector switch with up to 11 conductors- 3000K-6500K versions- versions for FOOD industry (Red Meat, Marbled Meat, Fish, Bread, Pastries and Produce)- CLD-EC wiring for centrally powered emergency lighting, subcode -0050
--------------	--

WARRANTY

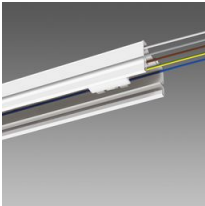
After sales warranty	5 yr
----------------------	------

6604 - Techno System - wide beam 60° - CRI 90

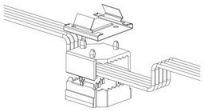
Code: 133042-00



6002 Power track - not in continuous line



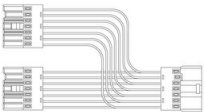
6003 Power track - without connector



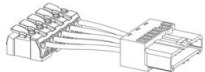
6620 Selector switch



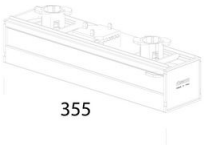
6621 Electrified joint



6622 Electrified T joint



6623 Power supply



355

6624 Selector switch cover



6052 Suspension for chain



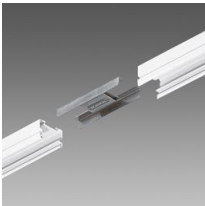
6053 Suspension for cable



6510 Simple suspension



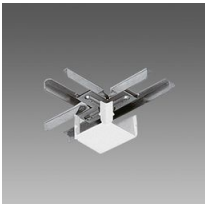
6512 Wire



6010 Linear joint



6015 Angle joint



6020 T-joint

6604 - Techno System - wide beam 60° - CRI 90

Code: 133042-00

