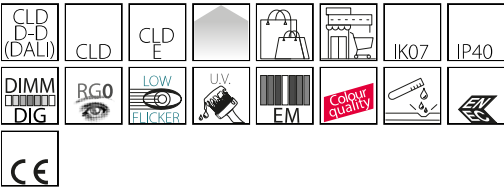


6605 - Techno System - semi-spherical diffuser wide beam - CRI 90

Code: 133053-07

GENERAL INFORMATION



Its simple, modern design blends perfectly into any space. It is 1421-mm long (but can be requested in 575/1139/1703/2267/2831/3395 mm), and comes in many versions.
The new Techno System has a wide range of optics with different LEDs. This makes it possible to select the most suitable luminaire for any design while achieving the required light levels at lower energy consumption.



Article	6605 - Techno System - semi-spherical diffuser wide beam - CRI 90
Code	133053-07

DIMENSIONS AND WEIGHT

Length (mm)	1421 mm
Width (mm)	60 mm
Height (mm)	52 mm
Weight (Kg)	2.085 kg

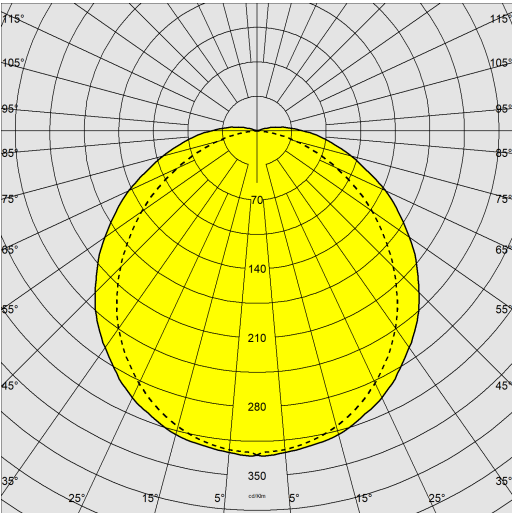
ELECTRICAL CHARACTERISTICS AND CONTROLS

Voltage type	AC
Min Voltage (V)	220 V
Max Voltage (V)	240 V
Min Frequency (Hz)	50 Hz
Max Frequency (Hz)	60 Hz
Frequency (Hz)	50 Hz
Wiring name	CLD-E
Power factor	≥0.95
Insulation class	Class I
Controllability	None

6605 - Techno System - semi-spherical diffuser wide beam - CRI 90

Code: 133053-07

PHOTOMETRIC DATA



Lighting source	LED
CRI	90
Luminous flux (output) (lm)	6831 lm
Power absorption (total) (W)	71 W
CCT	4000 K
Luminous efficacy (lm/W)	96 lm/W
Low Flicker	luminaire with very low flicker: evenly distributed light for greater visual safety.
LED flux maintenance	50000 hr, L 85, B 10

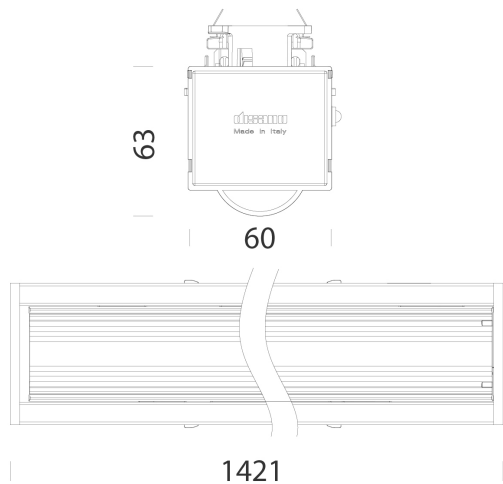
MECHANICAL CHARACTERISTICS

Impact resistance rating (IK)	IK07
IP	40

6605 - Techno System - semi-spherical diffuser wide beam - CRI 90

Code: 133053-07

MATERIALS AND COLOURS



Housing	in galvanized rolled steel, with anti-cutting turned-up edges and ABS end caps.
Diffuser	semi-spherical in polycarbonate, transparent, grooved for greater light control, V2 self-extinguishing, UV stabilised.
Coating	pre-painted in oven with polyester resin, UV-stabilised, phosphate pre-treatment.
Colour	White
Equipment	designed as standard for 5-pole, 7-pole (EMergency or DIMMerable DALI versions) and 11-pole (EMergency and DIMMerable DALI versions) wiring. External fastening system for attachment to the channel.

EMERGENCY LIGHTING

Type of emergency	S.A.
Battery life-recharge	1h

STANDARDS AND COMPLIANCE

Photobiological safety class	RG0
Markings and tests	CE, ENEC
Reference standards	EN60598-1. With degree of protection according to EN60529. The lighting fixture meets all IFS and BRC requirements, and the regulation of the HACCP Directive regarding lighting systems installed in food processing plants.
Energy Label	C

GEAR

Upon request	<ul style="list-style-type: none">- phase selector switch with up to 11 conductors- 3000K-6500K versions- versions for FOOD industry (Red Meat, Marbled Meat, Fish, Bread, Pastries and Produce)- CLD-EC wiring for centrally powered emergency lighting, subcode -0050
--------------	--

WARRANTY

After sales warranty	5 yr
----------------------	------

DOWNLOAD

MOUNTS

AssemblyInstructions techno system 01-23.pdf

DESIGNS

BIM 6605 Techno System.zip

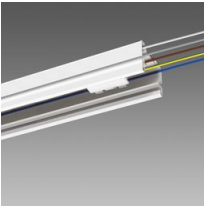
TechnicalDrawing 6616.dxf

TechnicalDrawing3D disano 6605 TechnoSystem.3ds

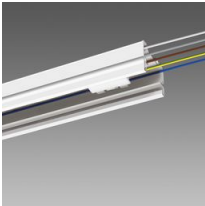


6605 - Techno System - semi-spherical diffuser wide beam - CRI 90

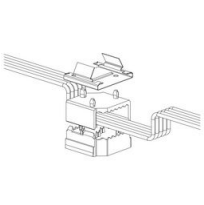
Code: 133053-07



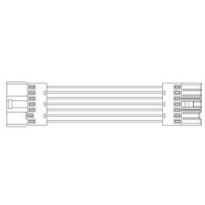
6002 Power track - not in continuous line



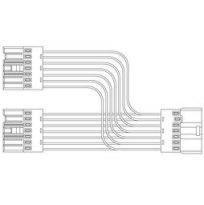
6003 Power track - without connector



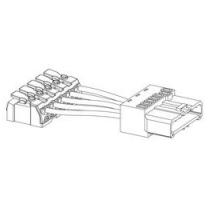
6620 Selector switch



6621 Electrified joint



6622 Electrified T joint



6623 Power supply



355

6624 Selector switch cover



6052 Suspension for chain



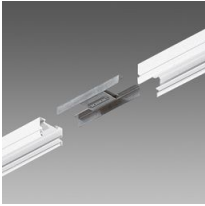
6053 Suspension for cable



6510 Simple suspension



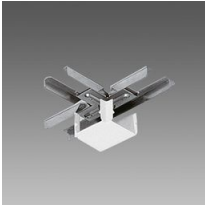
6512 Wire



6010 Linear joint



6015 Angle joint



6020 T-joint

6605 - Techno System - semi-spherical diffuser wide beam - CRI 90

Code: 133053-07

