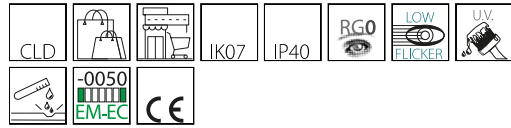


6616 - Techno System - SINGLE - semi-spherical diffuser wide beam - CRI 80

Code: 133055-00

GENERAL INFORMATION



Article	6616 - Techno System - SINGLE - semi-spherical diffuser wide beam - CRI 80
Code	133055-00

DIMENSIONS AND WEIGHT

Length (mm)	1421 mm
Width (mm)	60 mm
Height (mm)	63 mm
Weight (Kg)	1.5 kg

ELECTRICAL CHARACTERISTICS AND CONTROLS

Voltage type	AC
Min Voltage (V)	220 V
Max Voltage (V)	240 V
Min Frequency (Hz)	50 Hz
Max Frequency (Hz)	60 Hz
Frequency (Hz)	50 Hz
Wiring name	CLD
Power factor	≥0.95
Insulation class	Class I
Controllability	None



Its simple, modern design blends perfectly into any space. It is 1421-mm long (but can be requested in 575/1139/1703/2267/2831/3395 mm), and comes in many versions.

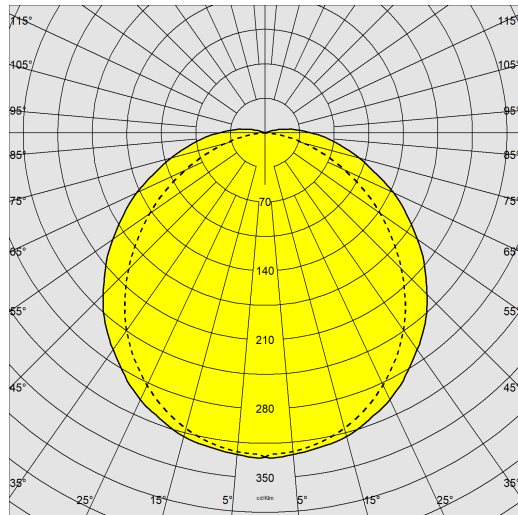
The new Techno System has a wide range of optics with different LEDs. This makes it possible to select the most suitable luminaire for any design while achieving the required light levels at lower energy consumption.



6616 - Techno System - SINGLE - semi-spherical diffuser wide beam - CRI 80

Code: 133055-00

PHOTOMETRIC DATA



Distribution type	Symmetric wide beam
Lighting source	LED
CRI	80
Luminous flux (output) (lm)	9523 lm
Power absorption (total) (W)	58 W
CCT	4000 K
Luminous efficacy (lm/W)	164 lm/W
Low Flicker	luminaire with very low flicker: evenly distributed light for greater visual safety.
LED flux maintenance	80000 hr, L 90, B 10

MECHANICAL CHARACTERISTICS

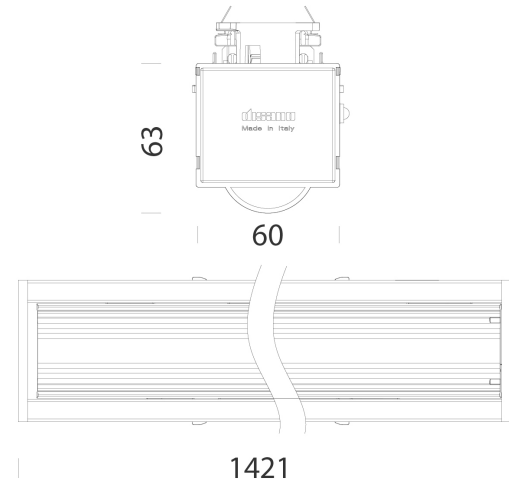
Impact resistance rating (IK)	IK07
IP	40



6616 - Techno System - SINGLE - semi-spherical diffuser wide beam - CRI 80

Code: 133055-00

MATERIALS AND COLOURS



DOWNLOAD

MOUNTS

[AssemblyInstructions technosystem 01-25.pdf](#)

DESIGNS

[BIM 6616 Techno System HE.zip](#)

[TechnicalDrawing 6616.dxf](#)



Housing	in galvanized rolled steel, with anti-cutting turned-up edges and ABS end caps.
Diffuser	semi-spherical in polycarbonate, transparent, grooved for greater light control, V2 self-extinguishing, UV stabilised.
Coating	pre-painted in oven with polyester resin, UV-stabilised, phosphate pre-treatment.
Colour	White
Equipment	designed as standard for 5-pole, 7-pole (EMergency or DIMMerable DALI versions) and 11-pole (EMergency and DIMMerable DALI versions) wiring. External fastening system for attachment to the channel.

STANDARDS AND COMPLIANCE

Photobiological safety class	RG0
Markings and tests	CE, ENEC
Reference standards	EN60598-1. With degree of protection according to EN60529. The lighting fixture meets all IFS and BRC requirements, and the regulation of the HACCP Directive regarding lighting systems installed in food processing plants.
Energy Label	C

GEAR

Upon request	<ul style="list-style-type: none"> - phase selector switch with up to 11 conductors - 3000K-6500K versions - versions for FOOD industry (Red Meat, Marbled Meat, Fish, Bread, Pastries and Produce) - CLD-EC wiring for centrally powered emergency lighting, subcode -0050 - version with subcode -0059 designed for direct replacement of Rapid System FL series ceiling lights. - version with subcode -42 for installation directly on the ceiling.
--------------	---

WARRANTY

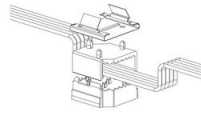
After sales warranty	5 yr
----------------------	------

6616 - Techno System - SINGLE - semi-spherical diffuser wide beam - CRI 80

Code: 133055-00



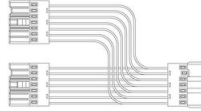
6011 Safety joint



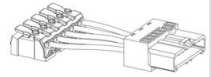
6620 Selector switch



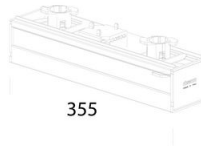
6621 Electrified joint



6622 Electrified T joint



6623 Power supply



6624 Selector switch cover



6052 Suspension for chain



6053 Suspension for cable



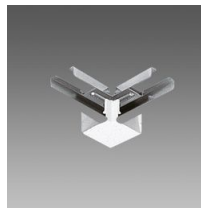
6510 Simple suspension



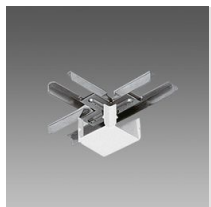
6512 Wire



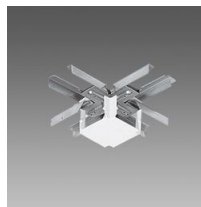
6010 Linear joint



6015 Angle joint



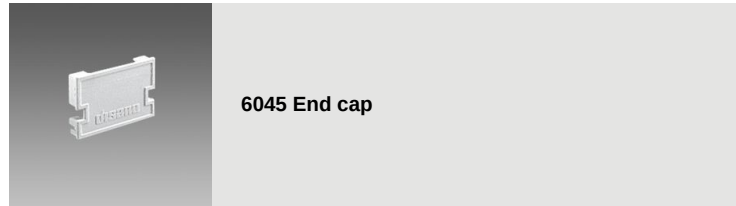
6020 T-joint



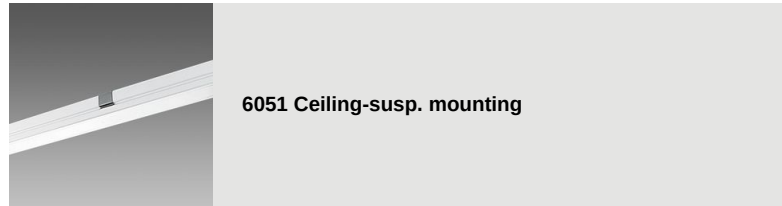
6025 X-joint

6616 - Techno System - SINGLE - semi-spherical diffuser wide beam - CRI 80

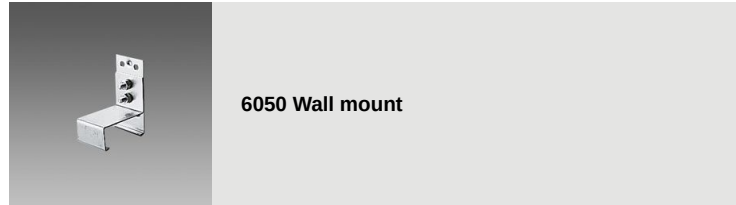
Code: 133055-00



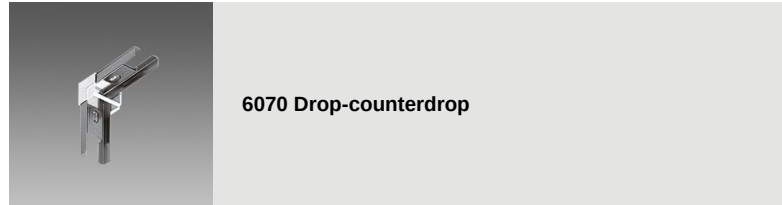
6045 End cap



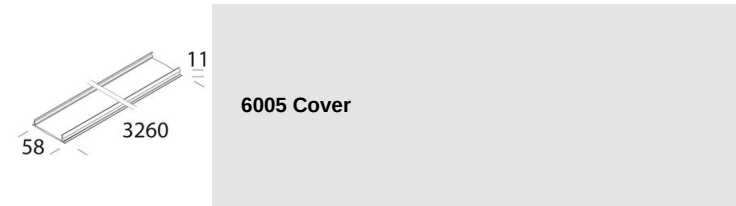
6051 Ceiling-susp. mounting



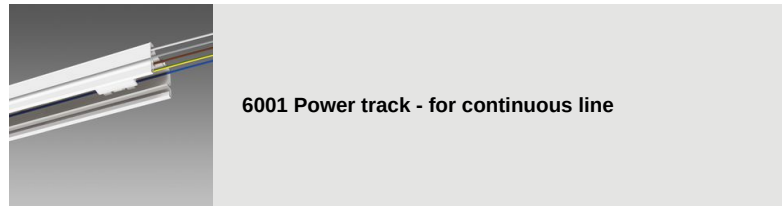
6050 Wall mount



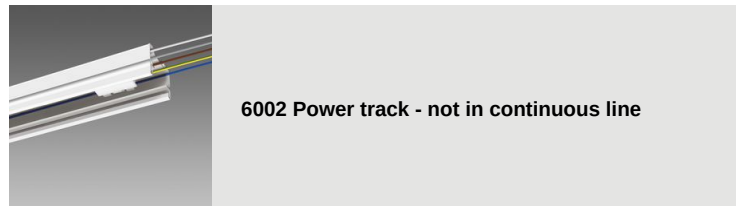
6070 Drop-counterdrop



6005 Cover



6001 Power track - for continuous line



6002 Power track - not in continuous line



6003 Power track - without connector