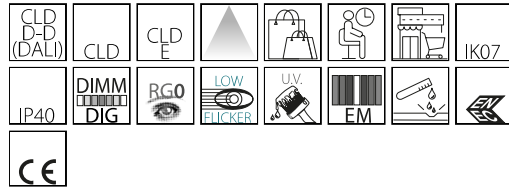


6606 - Techno System HE - UGR - CRI 80

Code: 133062-6041

GENERAL INFORMATION



Article	6606 - Techno System HE - UGR - CRI 80
Code	133062-6041

DIMENSIONS AND WEIGHT

Length (mm)	1421 mm
Width (mm)	60 mm
Height (mm)	52 mm
Weight (Kg)	1.8 kg

ELECTRICAL CHARACTERISTICS AND CONTROLS

Voltage type	AC
Min Voltage (V)	220 V
Max Voltage (V)	240 V
Min Frequency (Hz)	50 Hz
Max Frequency (Hz)	60 Hz
Frequency (Hz)	50 Hz
Wiring name	CLD-D-D
Control interface	DALI
Power factor	≥0.95
Insulation class	Class I
Controllability	Yes (External control)



Its simple, modern design blends perfectly into any space. It is 1421-mm long (but can be requested in 575/1139/1703/2267/2831/3395 mm), and comes in many versions.

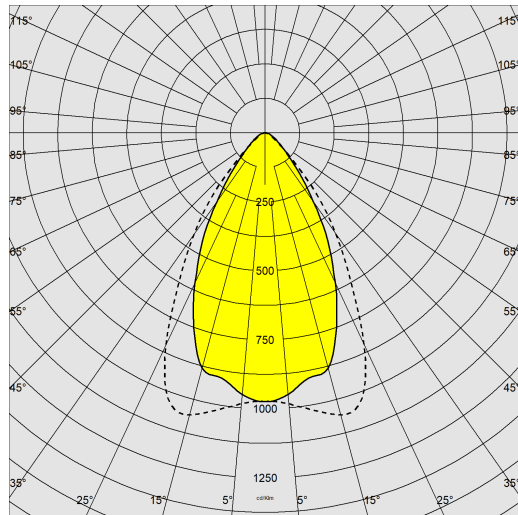
The new Techno System has a wide range of optics with different LEDs. This makes it possible to select the most suitable luminaire for any design while achieving the required light levels at lower energy consumption.



6606 - Techno System HE - UGR - CRI 80

Code: 133062-6041

PHOTOMETRIC DATA



Distribution type	Symmetric medium beam
Lighting source	LED
CRI	80
Luminous flux (output) (lm)	4591 lm
Power absorption (total) (W)	33 W
CCT	4000 K
Luminous efficacy (lm/W)	139 lm/W
Unified glare rating UGR (EN 12464-1) (Reflectance coefficient: ceiling 0.7 - walls 0.5)	133062-xx UGR<19 133063-xx UGR<22
Low Flicker	luminaire with very low flicker: evenly distributed light for greater visual safety.
LED flux maintenance	50000 hr, L 85, B 10



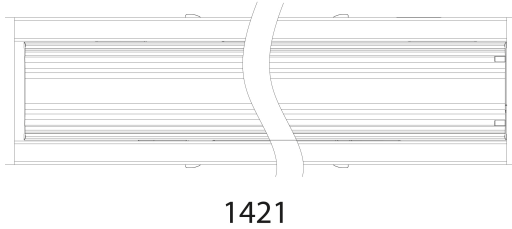
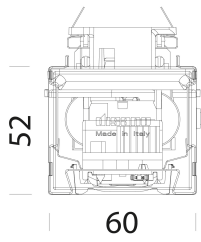
MECHANICAL CHARACTERISTICS

Impact resistance rating (IK)	IK07
IP	40

6606 - Techno System HE - UGR - CRI 80

Code: 133062-6041

MATERIALS AND COLOURS



DOWNLOAD

MOUNTS

[AssemblyInstructions techno system 01-23.pdf](#)

DESIGNS

[BIM 6606 Techno System HE.zip](#)

[TechnicalDrawing technosystem.dxf](#)



Housing	in galvanized rolled steel, with anti-cutting turned-up edges and ABS end caps.
Optics	in high-performance PMMA resistant to high temperatures and UV rays.
Coating	pre-painted in oven with polyester resin, UV-stabilised, phosphate pre-treatment.
Colour	White
Equipment	designed as standard for 5-pole, 7-pole (EMergency or DIMMerable DALI versions) and 11-pole (EMergency and DIMMerable DALI versions) wiring. External fastening system for attachment to the channel.

STANDARDS AND COMPLIANCE

Photobiological safety class	RG0
Markings and tests	CE, ENEC
Reference standards	EN60598-1. With degree of protection according to EN60529. The lighting fixture meets all IFS and BRC requirements, and the regulation of the HACCP Directive regarding lighting systems installed in food processing plants.
Energy Label	C

GEAR

Upon request	<ul style="list-style-type: none"> - phase selector switch with up to 11 conductors - 3000K-6500K versions - versions for FOOD industry (Red Meat, Marbled Meat, Fish, Bread, Pastries and Produce) - CLD-EC wiring for centrally powered emergency lighting, subcode -0050
--------------	---

WARRANTY

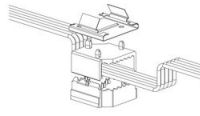
After sales warranty	5 yr
----------------------	------

6606 - Techno System HE - UGR - CRI 80

Code: 133062-6041



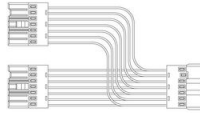
6011 Safety joint



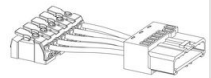
6620 Selector switch



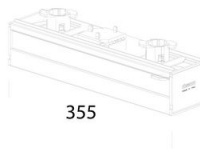
6621 Electrified joint



6622 Electrified T joint



6623 Power supply



6624 Selector switch cover



6510 Simple suspension



6052 Suspension for chain



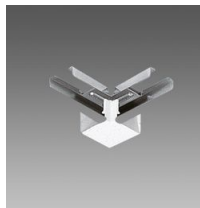
6053 Suspension for cable



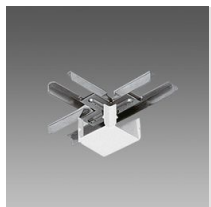
6512 Wire



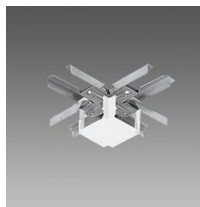
6010 Linear joint



6015 Angle joint



6020 T-joint



6025 X-joint

6606 - Techno System HE - UGR - CRI 80

Code: 133062-6041

