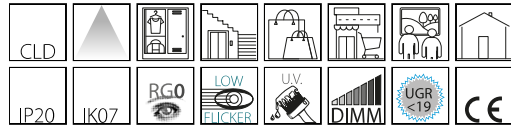


## 3877 - Channel - direct light

Code: 145171-00

### GENERAL INFORMATION



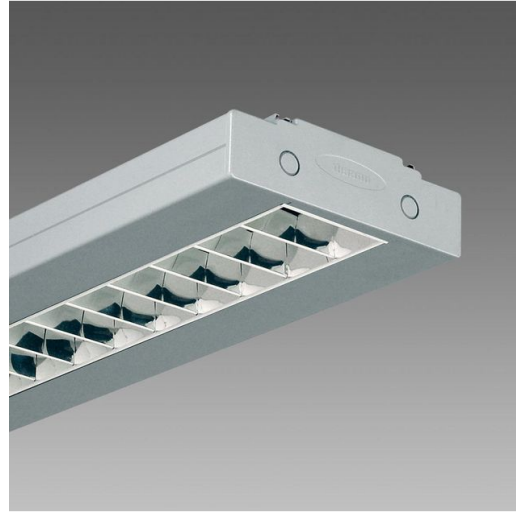
Article	3877 - Channel - direct light
Code	145171-00

### DIMENSIONS AND WEIGHT

Length (mm)	1180 mm
Width (mm)	210 mm
Height (mm)	50 mm
Weight (Kg)	4.7 kg

### ELECTRICAL CHARACTERISTICS AND CONTROLS

Voltage type	AC
Min Voltage (V)	220 V
Max Voltage (V)	240 V
Min Frequency (Hz)	50 Hz
Max Frequency (Hz)	60 Hz
Frequency (Hz)	50 Hz
Wiring name	CLD
Power factor	≥0.95
Insulation class	Class I
Controllability	None



A simple solution to include advanced technology into VDT office lighting

Great news for the prestigious and iconic Disano lighting system Channel, a true leader in its sector: starting from today, this top seller from Disano will be available in the LED version. Thanks to the expertise and experience of Disano, the basic features of the new version are the ones that have guaranteed the success of these commercial systems over the years also thanks to the main advantages of the LED lighting technology: quality lighting, energy savings, longer life and, last but not least, high gloss 99.99 aluminium dark light optics. Similar requirements can be found only in superior design fixtures.

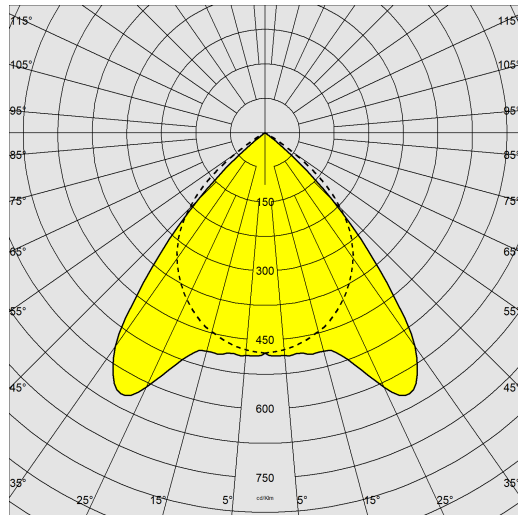
Channel stands out as the ideal solution for offices with VDT, because it is equipped with LED sources that allow remarkable savings on running costs, and it is characterised by versatility and easy mounting and transformation features. The LEDs used are the result of the most advanced and modern technological research. The low flicker certificate is the guarantee of light stability, a very important factor for the protection of workers' health and comfort, further guaranteed by its insertion in the photobiological risk exempt group.



## 3877 - Channel - direct light

Code: 145171-00

### PHOTOMETRIC DATA



Lighting source	LED
CRI	80
Luminous flux (output) (lm)	2681 lm
Power absorption (total) (W)	27 W
CCT	4000 K
Luminous efficacy (lm/W)	99 lm/W
Unified glare rating UGR (EN 12464-1) (Reflectance coefficient: ceiling 0.7 - walls 0.5)	UGR<19, according to standard EN 12464.
Low Flicker	luminaire with very low flicker: evenly distributed light for greater visual safety.
LED flux maintenance	50000 hr, L 80, B 20

### MECHANICAL CHARACTERISTICS

Impact resistance rating (IK)	IK07
IP	20



## 3877 - Channel - direct light

Code: 145171-00

### MATERIALS AND COLOURS

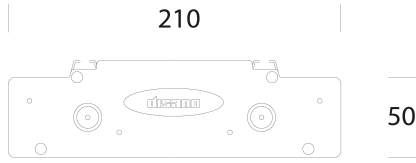
Housing	in extruded aluminium with die-cast aluminium end caps.
Optics	dark light double parabolic louvers in high gloss 99.99 aluminium, anti-dazzle and anti-iridescent, very low luminance, and PDV treatment.
Coating	the fully automated powder-coating cycle involves a polyester-based, salt-spray corrosion-resistant and UV-stabilised paint.
Colour	Grey
Equipment	snap-fastened optics, it stays attached with fall-proof springs.

### STANDARDS AND COMPLIANCE

Photobiological safety class	RG0
Markings and tests	CE
Reference standards	EN60598-1. They have a degree of protection according to the EN60529 standard.
Energy Label	C

### WARRANTY

After sales warranty	3 yr
----------------------	------



1180/1480



### DOWNLOAD

#### MOUNTS

[AssemblyInstructions channel 10-21.pdf](#)

#### DESIGNS

[TechnicalDrawing 3877-3878.dxf](#)

[TechnicalDrawing3D disano 3877 channel 1480.3ds](#)



## 3877 - Channel - direct light

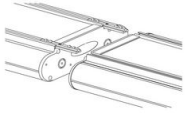
Code: 145171-00



2292 Joining bracket for linear systems



2518 Simple suspension



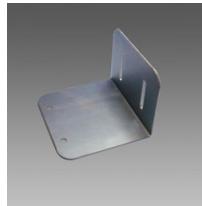
2290 Linear joint



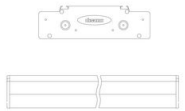
2513 Double suspension



2514 Double electrified suspension



2291 Wall mount



395 Module S1 Channel



376 Ceiling mount