

3877 - Channel - direct light

Code: 145173-00



A simple solution to include advanced technology into VDT office lighting  
Great news for the prestigious and iconic Disano lighting system Channel, a true leader in its sector: starting from today, this top seller from Disano will be available in the LED version. Thanks to the expertise and experience of Disano, the basic features of the new version are the ones that have guaranteed the success of these commercial systems over the years also thanks to the main advantages of the LED lighting technology: quality lighting, energy savings, longer life and, last but not least, high gloss 99.99 aluminium dark light optics. Similar requirements can be found only in superior design fixtures. Channel stands out as the ideal solution for offices with VDT, because it is equipped with LED sources that allow remarkable savings on running costs, and it is characterised by versatility and easy mounting and transformation features. The LEDs used are the result of the most advanced and modern technological research. The low flicker certificate is the guarantee of light stability, a very important factor for the protection of workers' health and comfort, further guaranteed by its insertion in the photobiological risk exempt group.



GENERAL INFORMATION

Article	3877 - Channel - direct light
Code	145173-00

DIMENSIONS AND WEIGHT

Length (mm)	1480 mm
Width (mm)	210 mm
Height (mm)	50 mm
Weight (Kg)	5.8 kg

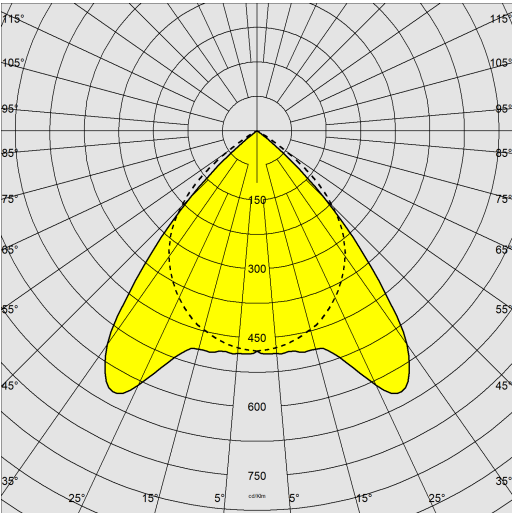
ELECTRICAL CHARACTERISTICS AND CONTROLS

Voltage type	AC
Min Voltage (V)	220 V
Max Voltage (V)	240 V
Min Frequency (Hz)	50 Hz
Max Frequency (Hz)	60 Hz
Frequency (Hz)	50 Hz
Wiring name	CLD
Power factor	≥0.95
Insulation class	Class I
Controllability	None

3877 - Channel - direct light

Code: 145173-00

PHOTOMETRIC DATA



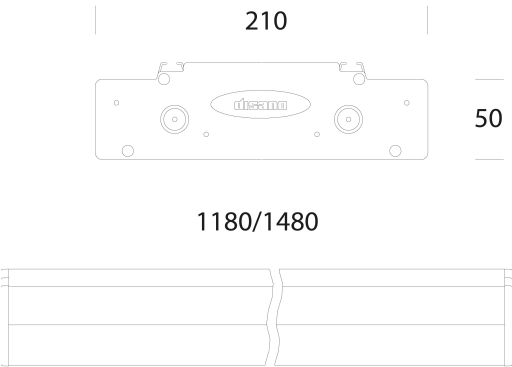
Lighting source	LED
CRI	80
Luminous flux (output) (lm)	3352 lm
Power absorption (total) (W)	34 W
CCT	4000 K
Luminous efficacy (lm/W)	99 lm/W
Unified glare rating UGR (EN 12464-1) (Reflectance coefficient: ceiling 0.7 - walls 0.5)	UGR<19, according to standard EN 12464.
Low Flicker	luminaire with very low flicker: evenly distributed light for greater visual safety.
LED flux maintenance	50000 hr, L 80, B 20

MECHANICAL CHARACTERISTICS

Impact resistance rating (IK)	IK07
IP	20

3877 - Channel - direct light

Code: 145173-00



DOWNLOAD

MOUNTS

AssemblyInstructions channel 04-25.pdf

DESIGNS

TechnicalDrawing 3877-3878.dxf

TechnicalDrawing3D disano 3877 channel 1480.3ds



MATERIALS AND COLOURS

Housing	in extruded aluminium with die-cast aluminium end caps.
Optics	dark light double parabolic louvers in high gloss 99.99 aluminium, anti-dazzle and anti-iridescent, very low luminance, and PDV treatment.
Coating	the fully automated powder-coating cycle involves a polyester-based, salt-spray corrosion-resistant and UV-stabilised paint.
Colour	Grey
Equipment	snap-fastened optics, it stays attached with fall-proof springs.

STANDARDS AND COMPLIANCE

Photobiological safety class	RG0
Markings and tests	CE
Reference standards	EN60598-1. They have a degree of protection according to the EN60529 standard.
Energy Label	C

WARRANTY

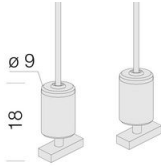
After sales warranty	3 yr
----------------------	------

3877 - Channel - direct light

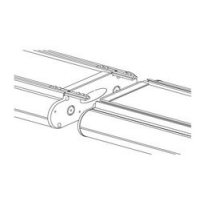
Code: 145173-00



2292 Joining bracket for linear systems



2518 Simple suspension



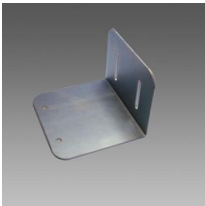
2290 Linear joint



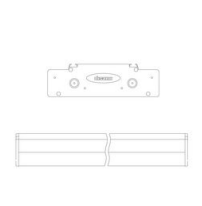
2513 Double suspension



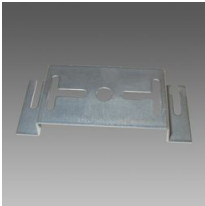
2514 Double electrified suspension



2291 Wall mount



395 Module S1 Channel



376 Ceiling mount