

971 - Ottima - High Performance

Code: 164773-07



True energy savings can only be achieved with quality lighting. This is why Disano has developed Ottima LED, the high-efficiency watertight fixture that allows you to improve the quality of light while reducing consumption.

Disano's extensive industrial and commercial experience has led to the creation of a product that offers the perfect solution for relamping existing systems: in a single 1500mm length, Ottima LED can replace old 58W lamps.

Ottima LED stands out from similar products for the quality of the materials and the accuracy with which it is designed to achieve special lighting effects.

The diffuser is made from the best quality polycarbonate, UV-stabilised, with a high coefficient of light transmission and diffusion, without decreasing performance. The special grooving of the diffuser achieves an all-light effect that eliminates glare, diffusing light completely perfectly.

Ottima LED is designed to make installation as easy as possible, with standard steel brackets for easy and secure attachment to ceilings or walls (with the possibility of adjusting the installation spacing). In addition, the standard spring hook allows for quick attachment to any chain suspension system.

Ottima LED can be equipped with control systems, such as presence detector radar, which optimises consumption, turning on the lights only when necessary.

It is a watertight fixture with careful attention to the smallest details in terms of technology, but which also knows how to present itself as an object of design, thanks to a clean and essential shape, in authentic Made-in-Italy style.



GENERAL INFORMATION

Article	971 - Ottima - High Performance
Code	164773-07

DIMENSIONS AND WEIGHT

Length (mm)	1506 mm
Width (mm)	105 mm
Height (mm)	80 mm
Weight (Kg)	2.6 kg

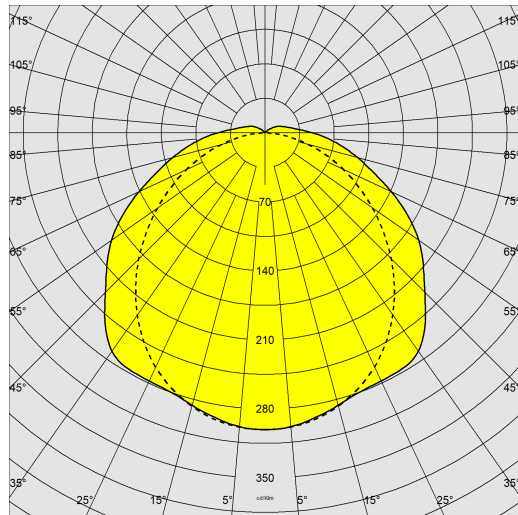
ELECTRICAL CHARACTERISTICS AND CONTROLS

Voltage type	AC
Min Voltage (V)	220 V
Max Voltage (V)	240 V
Min Frequency (Hz)	50 Hz
Max Frequency (Hz)	60 Hz
Frequency (Hz)	50 Hz
Wiring name	CLD-E
Power factor	≥0.9
Insulation class	Class I
Controllability	None

971 - Ottima - High Performance

Code: 164773-07

PHOTOMETRIC DATA



Distribution type	Symmetric wide beam
Lighting source	LED
CRI	≥80
Luminous flux (output) (lm)	9468 lm
Power absorption (total) (W)	56 W
CCT	4000 K
Luminous efficacy (lm/W)	169 lm/W
Low Flicker	luminaire with very low flicker: evenly distributed light for greater visual safety.
Colour consistency	SDCM3
LED flux maintenance	100000 hr, L 90, B 10

MECHANICAL CHARACTERISTICS

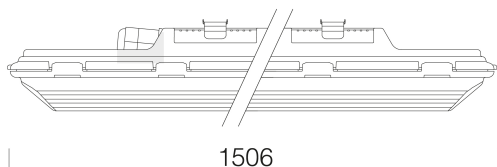
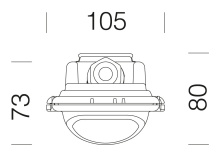
Impact resistance rating (IK)	IK10
IP	66
Ambient temperature - min	5 °C
Ambient temperature - max	40 °C



971 - Ottima - High Performance

Code: 164773-07

MATERIALS AND COLOURS



DOWNLOAD

MOUNTS

[AssemblyInstructions ottima 02-24.pdf](#)

DESIGNS

[BIM 971 Ottima 02-24.zip](#)

[TechnicalDrawing ottimaj.dxf](#)



Housing	injection-moulded, made of grey RAL 7035 polycarbonate, shatterproof, UV-stabilised, with high mechanical strength thanks to the structure reinforced by internal ribs.
Optics	galvanised steel pre-painted in oven with white polyester resin, UV-stabilised. Fastened to the body with a quick coupling by means of a device machined directly on the body.
Diffuser	injection-moulded in polycarbonate with internal grooves for greater light control, self-extinguishing V2, UV-stabilised, smooth outer finish to enable easy cleaning for maximum light efficiency.
Colour	Grey
Equipment	<ul style="list-style-type: none"> - sealing gasket in eco-friendly, anti-aging expanded polyurethane foam - ceiling mounting brackets and suspension hook in stainless steel - quick connector - clamp and safety screws in stainless steel

ATTENTION !

Do not install on surfaces subject to strong vibrations, outdoors on hanging cables, or on walls under metallic grates, or on poles, and in any case, never expose the fixture to direct sunlight.

Check the compatibility between the material constituting the product and the space where it will be installed.

We recommend the use of fixtures made of steel with direct exposure to sunlight.

EMERGENCY LIGHTING

Type of emergency	S.A.
Emergency operation time	1h

STANDARDS AND COMPLIANCE

Photobiological safety class	RG0
Markings and tests	CE
Reference standards	EN60598-1. With degree of protection according to EN60529. The lighting fixture meets all IFS and BRC requirements, and the regulation of the HACCP Directive regarding lighting systems installed in food processing plants.
Laboratory Tests	<ul style="list-style-type: none"> - the UL 94 Standard is considered a reference for rating the ignition characteristics of plastic materials. The watertight fixtures are made of V2 class material that self-extinguishes in 25 seconds. - passes the Glow Wire Test at 850 °C.
Energy Label	C

GEAR

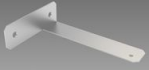
Upon request	<ul style="list-style-type: none"> - radar sensor for ON-OFF watertight fixtures, subcode -19 - wiring through continuous row, subcode -0072 - wiring for centrally powered emergency lighting, subcode -0050 - 1-10V dimmer + emergency wiring, subcode -94
--------------	--------------------------------------------------------------------------------------------------------------------------------------------------------------------------------------------------------------------------------------------------------------------------------------------------------

WARRANTY

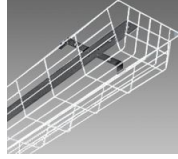
After sales warranty	7 yr
----------------------	------

971 - Ottima - High Performance

Code: 164773-07



978 Wall bracket



975 Anti-impact grid



6036 Universal connection