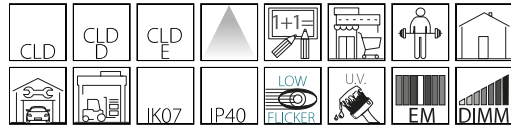


## 6502 - Rapid system - two-lamp LED

Code: 237541-00

### GENERAL INFORMATION



Drawing upon its expertise and leadership in the lighting sector, Disano presents the LED version of its Rapid System product. The LED version shares the same basic features of the other options with the addition of the advantages of LED lighting, such as quality output, energy savings and longer life. Such features can only be applied to luminaires with a high level of design and construction. It is ideal for use in stores to save on running costs, and for its versatility and different design configurations. The LEDs used are of the latest generation and the modules on which they are installed can be adjusted to optimise light and output when optical accessories are used. A simple and innovative solution for having the most advanced technology in stores and retail spaces in general.



Article	6502 - Rapid system - two-lamp LED
Code	237541-00

### DIMENSIONS AND WEIGHT

Length (mm)	628 mm
Width (mm)	63 mm
Height (mm)	76 mm
Weight (Kg)	1 kg

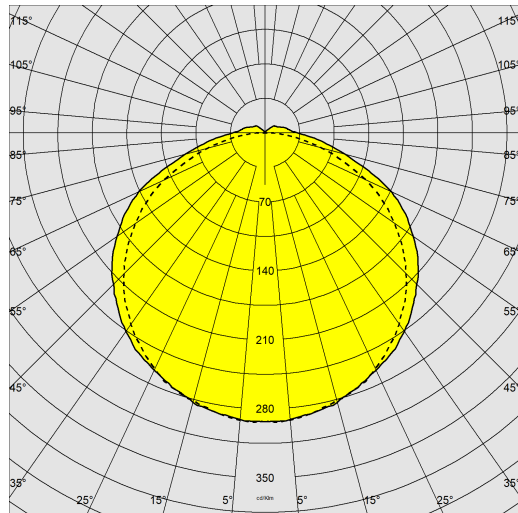
### ELECTRICAL CHARACTERISTICS AND CONTROLS

Voltage type	AC
Min Voltage (V)	220 V
Max Voltage (V)	240 V
Min Frequency (Hz)	50 Hz
Max Frequency (Hz)	60 Hz
Frequency (Hz)	50 Hz
Wiring name	CLD
Power factor	≥0.95
Insulation class	Class I
Controllability	None

## 6502 - Rapid system - two-lamp LED

Code: 237541-00

### PHOTOMETRIC DATA



Lighting source	LED
CRI	≥80
Luminous flux (output) (lm)	3497 lm
Power absorption (total) (W)	28 W
CCT	4000 K
Low Flicker	luminaire with very low flicker: evenly distributed light for greater visual safety.
LED flux maintenance	80000 hr, L 80, B 20

### MECHANICAL CHARACTERISTICS

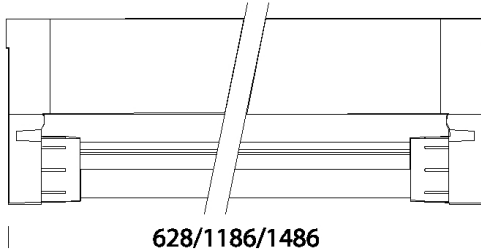
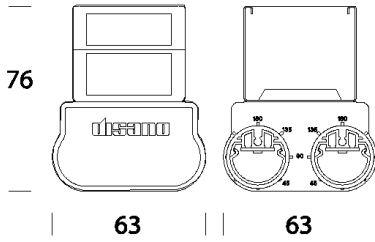
Impact resistance rating (IK)	IK07
IP	40



## 6502 - Rapid system - two-lamp LED

Code: 237541-00

### MATERIALS AND COLOURS



### DOWNLOAD

#### MOUNTS

[AssemblyInstructions rapid system 07-20.pdf](#)

#### DESIGNS

[TechnicalDrawing 6502.dxf](#)



Housing	in galvanized rolled steel, with anti-cutting turned-up edges and ABS end caps.
Diffuser	micro-ribbed methacrylate
Coating	pre-painted in oven with polyester resin, UV-stabilised, phosphate pre-treatment.
Colour	White
Equipment	-fixing pawl in nylon. - LED tubes can be rotated to direct the light and optimise the output of the optical accessories.

### STANDARDS AND COMPLIANCE

Photobiological safety class	RG0
Markings and tests	CE
Reference standards	EN60598-1. With degree of protection according to EN60529.
Energy Label	C

### WARRANTY

After sales warranty	5 yr
----------------------	------

## 6502 - Rapid system - two-lamp LED

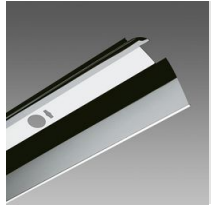
Code: 237541-00



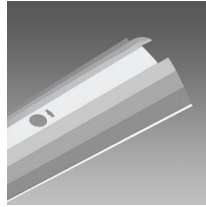
6405 LED upper cover



6052 Suspension for chain



6413 One-lamp narrow-beam reflector



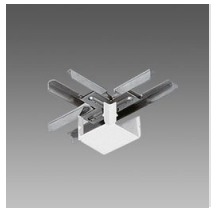
6412 One-two lamp reflector



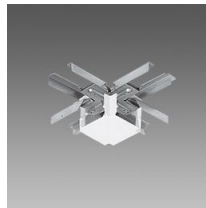
6010 Linear joint



6015 Angle joint



6020 T-joint



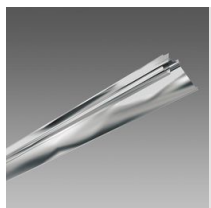
6025 X-joint



6053 Suspension for cable



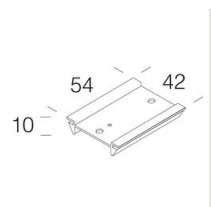
6414 Rapid System concentric parabolic



6411 Asymmetric reflector



6037 Suspension hook



6030 Selector switch support



6036 Universal connection

## 6502 - Rapid system - two-lamp LED

Code: 237541-00



6070 Drop-counterdrop



6051 Ceiling-susp. mounting



6050 Wall mount



6045 End cap