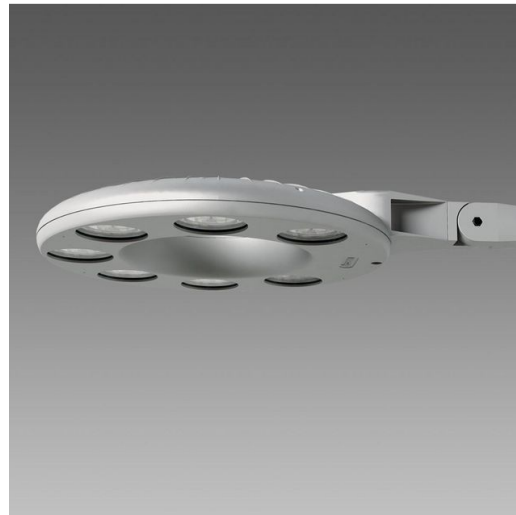


## 3331 - Disco 2 - wide beam

Code: 330044-00

### GENERAL INFORMATION



LED urban lighting sums up the values we expect from technology: light that enhance night-time environments, consumes less and adds aesthetic quality to daytime scenarios. New shapes for new lighting technologies. The dimensions of the LEDs allow the fixture to display an elegant design, while the circular shape provides optimal light distribution, and the cooling fins ensure proper heat dissipation. The innovative design is capable of bringing a new visual comfort to any context. With DISCO, LED sources generate a new concept of urban lighting, which makes the process of innovation evident. DISCO adds visibility and prestige to any lighting project. DISCO is a lighting fixture specifically designed to make the most of the advantages of LEDs in urban lighting, such as energy savings and new light quality. The all-new aesthetics of these lamp posts provide street furniture with a new appearance in tune with the desire to renew the urban landscape. The requirements of uniform light distribution and heat dissipation are also met in the best possible way.



Article	3331 - Disco 2 - wide beam
Code	330044-00

### DIMENSIONS AND WEIGHT

Length (mm)	790 mm
Width (mm)	680 mm
Height (mm)	110 mm
Weight (Kg)	14 kg

### INSTALLATION

Diameter (Ø) of pole connector (mm)	60-60 mm
Surface exposed to wind (mm)	L 82000 mm <sup>2</sup> , F 307500 mm <sup>2</sup>

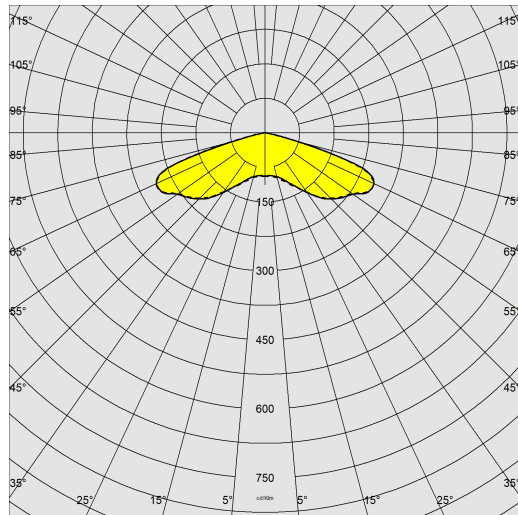
### ELECTRICAL CHARACTERISTICS AND CONTROLS

Voltage type	AC
Min Voltage (V)	220 V
Max Voltage (V)	240 V
Min Frequency (Hz)	50 Hz
Max Frequency (Hz)	60 Hz
Frequency (Hz)	50 Hz
Wiring name	CLD
Wiring	standard with 700mA 220-240V 50/60Hz double insulation driver.
Power factor	>0.9
Rated Current	700 mA
Surge protector (common) (EN 61547)	6 kV, 8 kV
Insulation class	Class II
Controllability	None

## 3331 - Disco 2 - wide beam

Code: 330044-00

### PHOTOMETRIC DATA



Lighting source	LED
CRI	80
Luminous flux (output) (lm)	14732 lm
Power absorption (total) (W)	116 W
CCT	4000 K
Luminous efficacy (lm/W)	127 lm/W
Low Flicker	luminaire with very low flicker: evenly distributed light for greater visual safety.
LED flux maintenance	100000 hr, L 80, B 20

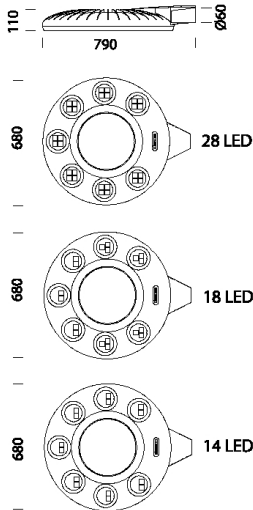
### MECHANICAL CHARACTERISTICS

Impact resistance rating (IK)	IK08
IP	66
Ambient temperature - min	-30 °C
Ambient temperature - max	40 °C



## 3331 - Disco 2 - wide beam

Code: 330044-00



### DOWNLOAD

#### MOUNTS

[AssemblyInstructions disco 03-23.pdf](#)

#### DESIGNS

[TechnicalDrawing 3331.dxf](#)

[TechnicalDrawing3D disano 3331 disco.3ds](#)



### MATERIALS AND COLOURS

Housing	in die-cast aluminium and designed with a very small surface exposed to wind. Cooling fins integrated in the cover tapering at the central hole.
Optics	secondary lenses in high-performance PMMA with flow recuperators in high-efficiency metalised polycarbonate.
Diffuser	extra-clear, tempered glass, 4 mm thick, resistant to thermal shock and impact (UNI-EN 12150-1:2001).
Heat sink	the heat sink is designed and made to allow the LEDs to operate at temperatures capable of ensuring excellent performance/output and long service life.
Pole connection	version with pole mount directly incorporated into the body, suitable for side-mount applications on 60-62 mm diameter poles.
Coating	pre-treatment of metal surface, polyester powder coating to ensure resistance to corrosion and salt spray fogs, UV stabilised.
Special coating (UPON REQUEST)	Upon request: protective coating recommended for marine environments within 5 km (3 miles) of the sea.
Colour	Graphite
Equipment	<ul style="list-style-type: none"> <li>- selector switch.</li> <li>- waterproof connector for quick installation with no need to open the fixture.</li> <li>- anti-condensation valve.</li> <li>- temperature controller with auto-reset.</li> <li>- EN 61547 compliant surge protection.</li> <li>- ADVANCED PROG built-in functions.</li> </ul>

### STANDARDS AND COMPLIANCE

Photobiological safety class	RG0 Ethr
Markings and tests	CE
Reference standards	EN60598-1. They have a degree of protection according to the EN60529 standard.
Energy Label	C

### WARRANTY

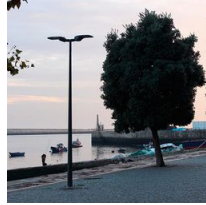
After sales warranty	5 yr
----------------------	------

## 3331 - Disco 2 - wide beam

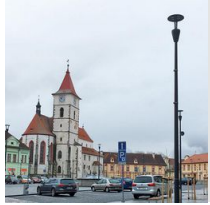
Code: 330044-00



1278 Conical



1481 steel conical pole to be buried



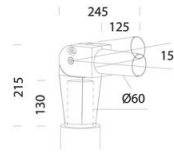
1480 steel conical pole with base



1478 Urban Pole to be buried



1477 Urban Pole - with base



290 Joint 60



1408 Fluted pole  $\varnothing$  100 with base



1409 Fluted pole  $\varnothing$  100



1508 Fluted pole  $\varnothing$  120 with base



1509 Fluted pole  $\varnothing$  120