

3342 - Loto 3 - asymmetric

Code: 330232-39

GENERAL INFORMATION



Article	3342 - Loto 3 - asymmetric
Code	330232-39

DIMENSIONS AND WEIGHT

Length (mm)	585 mm
Width (mm)	565 mm
Height (mm)	650 mm
Weight (Kg)	10.4 kg

INSTALLATION

Diameter (Ø) of pole connector (mm)	60-60 mm
Surface exposed to wind (mm)	L 104600 mm ² , F 230000 mm ²

ELECTRICAL CHARACTERISTICS AND CONTROLS

Voltage type	AC
Min Voltage (V)	220 V
Max Voltage (V)	240 V
Min Frequency (Hz)	50 Hz
Max Frequency (Hz)	60 Hz
Frequency (Hz)	50 Hz
Wiring name	CLD
Power factor	≥0.9
Rated Current	550 mA
Surge protector (common) (EN 61547)	6 kV, 10 kV
Insulation class	Class II
Controllability	Yes (Integrated)



Loto is the new frontier of lighting at the service of modern cities, public places and residents. With Loto, innovation is perfectly harmonised with the most advanced technologies in terms of quality and light emission.

Energy optimisation of consumption derives from the research in the field of LED sources and their management in order to achieve greater performance in different conditions of use and based on the specific lighting parameters required.

It is a cutting-edge product in terms of quality and shape, with a design that differs from most products currently on the market, enabling to fit into any urban context, both historical and contemporary, as well as in green, pedestrian and vehicular traffic areas.

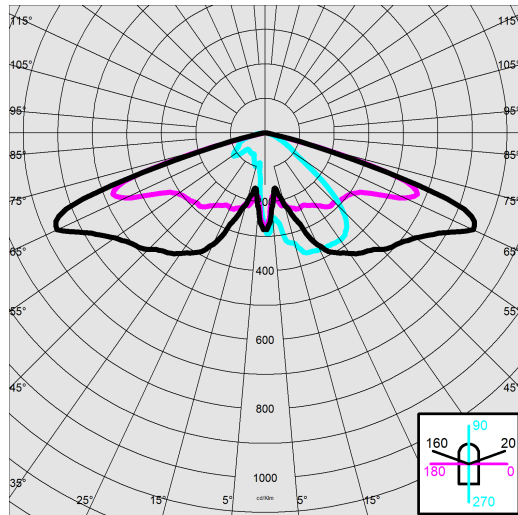
Its design combines technology and nature, making it resemble the shape of a plant. It's a visual presence capable of conveying the concepts of quality and light aimed at the well-being and excellence of the surrounding urban spaces. Available in pole-mounted versions with wide beam, asymmetric street and cycle lane optics.



3342 - Loto 3 - asymmetric

Code: 330232-39

PHOTOMETRIC DATA



Distribution type	Asymmetric
Lighting source	LED
CRI	80
Luminous flux (output) (lm)	6957 lm
Power absorption (total) (W)	54 W
CCT	3000 K
Luminous efficacy (lm/W)	109 lm/W
Low Flicker	luminaire with very low flicker: evenly distributed light for greater visual safety.
LED flux maintenance	100000 hr, L 80, B 10

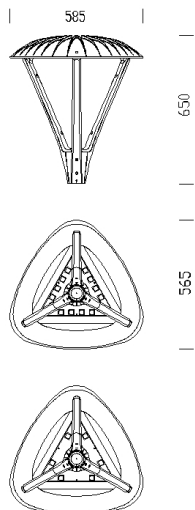
MECHANICAL CHARACTERISTICS

Impact resistance rating (IK)	IK09
IP	66
Ambient temperature - min	-30 °C
Ambient temperature - max	40 °C

3342 - Loto 3 - asymmetric

Code: 330232-39

MATERIALS AND COLOURS



12 LED

6 LED

DOWNLOAD

MOUNTS

[AssemblyInstructions loto 03-23.pdf](#)

DESIGNS

[TechnicalDrawing 3340.dxf](#)



Housing	in die-cast aluminium and designed with a very small surface exposed to wind. Cooling fins integrated in the cover.
Optics	in high-performance PMMA resistant to high temperatures and UV rays.
Diffuser	tempered glass, 4 mm thick, resistant to thermal shock and impact (UNI EN 12150-1:2001).
Heat sink	the heat sink is designed and made to allow the LEDs to operate at temperatures capable of ensuring excellent performance/output and long service life.
Pole connection	suited for poles with a diameter of 60 mm.
Coating	pre-treatment of metal surface, polyester powder coating to ensure resistance to corrosion and salt spray fogs, UV stabilised.
Special coating (UPON REQUEST)	upon request: available with coating tested to withstand corrosion tests in aggressive artificial atmospheres (UNI EN ISO 9227) or marine environments (sea front).
Colour	Grey
Equipment	<ul style="list-style-type: none"> - waterproof connector for quick installation with no need to open the fixture. - anti-condensation valve. - temperature controller with auto-reset. - EN 61547 compliant surge protection. - ADVANCED PROG built-in functions.

STANDARDS AND COMPLIANCE

Photobiological safety class	RG0 Ethr
Markings and tests	CE, ENEC
Reference standards	EN60598-1. With degree of protection according to EN60529.
Energy Label	C

WARRANTY

After sales warranty	5 yr
----------------------	------

3342 - Loto 3 - asymmetric

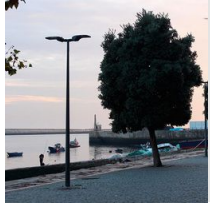
Code: 330232-39



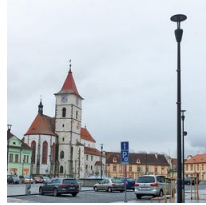
5 Fibreglass pole



1278 Conical



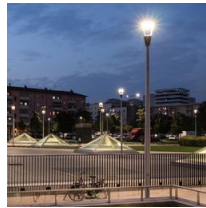
1481 steel conical pole to be buried



1480 steel conical pole with base



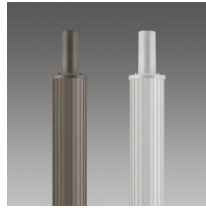
1478 Urban Pole to be buried



1477 Urban Pole - with base



1408 Fluted pole \varnothing 100 with base



1409 Fluted pole \varnothing 100



1508 Fluted pole \varnothing 120 with base



1509 Fluted pole \varnothing 120