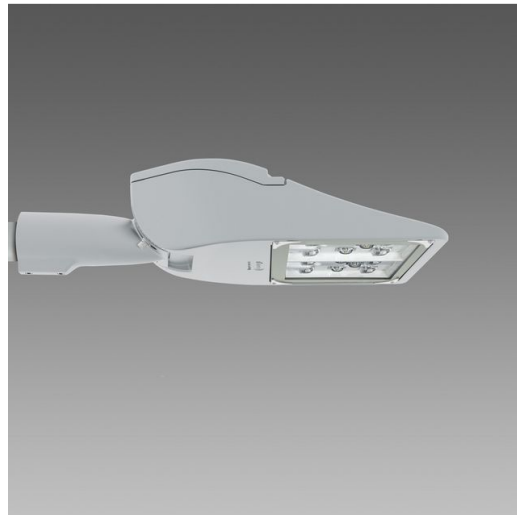
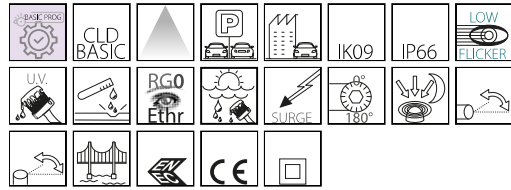


## 3282 - Rolle - T3

Code: 330420-39



Rolle is a latest generation LED street luminaire with a very simple design that makes it perfectly suited to different kinds of urban zones. Conceived to be used mainly on arterial and residential roads, it comes in multiple versions to serve as a great solution for many different projects due to its extraordinary versatility. It guarantees high energy savings with great lighting levels, enabling low energy consumption and reliable performance. It is equipped with a combined optic system made of high-performance PMMA that can withstand high temperatures and UV radiation. Rolle was designed with different photometric curves to make it suitable for car parks, pedestrian crossings and any urban setting.



### GENERAL INFORMATION

Article	3282 - Rolle - T3
Code	330420-39

### DIMENSIONS AND WEIGHT

Length (mm)	460 mm
Width (mm)	300 mm
Height (mm)	125 mm
Weight (Kg)	7.6 kg

### INSTALLATION

Diameter (Ø) of pole connector (mm)	46-76 mm
Surface exposed to wind (mm)	L 54800 mm <sup>2</sup> , F 143100 mm <sup>2</sup>

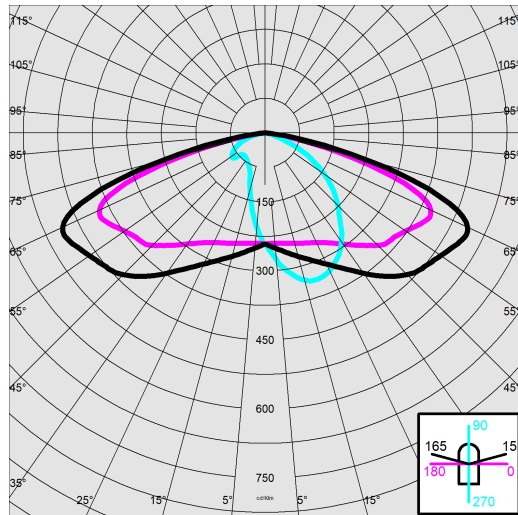
### ELECTRICAL CHARACTERISTICS AND CONTROLS

Voltage type	AC
Min Voltage (V)	220 V
Max Voltage (V)	240 V
Min Frequency (Hz)	50 Hz
Max Frequency (Hz)	60 Hz
Frequency (Hz)	50 Hz
Wiring name	CLD
Power factor	≥0.9
Rated Current	700 mA
Surge protector (common) (EN 61547)	6 kV, 10 kV
Insulation class	Class II
Controllability	None

## 3282 - Rolle - T3

Code: 330420-39

### PHOTOMETRIC DATA



Distribution type	Medium / Comfort
Lighting source	LED
CRI	70
Luminous flux (output) (lm)	5538 lm
Power absorption (total) (W)	43 W
CCT	3000 K
Luminous efficacy (lm/W)	129 lm/W
Low Flicker	luminaire with very low flicker: evenly distributed light for greater visual safety.
LED flux maintenance	100000 hr, L 80, B 10

### MECHANICAL CHARACTERISTICS

Impact resistance rating (IK)	IK09
IP	66
Ambient temperature - min	-30 °C
Ambient temperature - max	40 °C

## 3282 - Rolle - T3

Code: 330420-39

### MATERIALS AND COLOURS



### DOWNLOAD

#### MOUNTS

[AssemblyInstructions rolle 11-23.pdf](#)

#### DESIGNS

[TechnicalDrawing rolle1.dxf](#)



Housing	in die-cast aluminium and designed with a very small surface exposed to wind. Cooling fins integrated in the cover.
Optics	in high-performance PMMA resistant to high temperatures and UV rays. Flow recuperators in polycarbonate.
Diffuser	extra-clear, tempered glass, 4 mm thick, resistant to thermal shock and impact (UNI-EN 12150-1:2001).
Heat sink	the heat sink is designed and made to allow the LEDs to operate at temperatures capable of ensuring excellent performance/output and long service life.
Pole connection	in die-cast aluminium with clamps for fastening the fixture at different angles. Adjustable from 0° to 20° for side-mount applications; and from 0° to 15° for top-mount applications. Tilt pitch 5°. Suitable for 46-76 mm diameter poles.
Coating	the fully automated powder-coating cycle involves a polyester-based, salt-spray corrosion-resistant and UV-stabilised paint.
Special coating (UPON REQUEST)	Upon request: protective coating recommended for marine environments within 5 km (3 miles) of the sea.
Colour	Grey
Equipment	<ul style="list-style-type: none"> <li>- waterproof connector for quick installation with no need to open the fixture.</li> <li>- anti-condensation valve.</li> <li>- temperature controller with auto-reset.</li> <li>- EN 61547 compliant surge protection.</li> <li>- BASIC PROG built-in functions.</li> </ul>

### STANDARDS AND COMPLIANCE

Photobiological safety class	RG0 Ethr
Markings and tests	CE, ENEC
Reference standards	EN60598-1. They have a degree of protection according to the EN60529 standard.
Laboratory Tests	compliant with third-party certified vibration tests pursuant to ANSI C136.31: Street Lighting - Luminaire Vibration. Test level: 3.0G Level 2 for bridge/overpass applications.
Energy Label	C

### GEAR

Upon request	protection of up to 10KV.
--------------	---------------------------

### WARRANTY

After sales warranty	5 yr
----------------------	------

## 3282 - Rolle - T3

Code: 330420-39



**504 Single arm**



**508 Double arm**



**1481 steel conical pole to be buried**



**1480 steel conical pole with base**



**1508 Fluted pole ø 120 with base**



**1509 Fluted pole ø 120**



**1408 Fluted pole ø 100 with base**



**1409 Fluted pole ø 100**