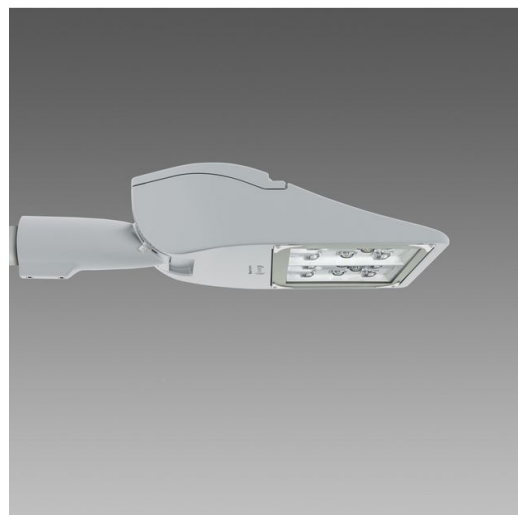
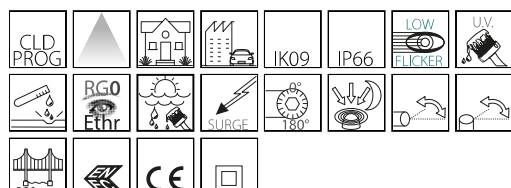


## Code: 330438-00



Article	3283 - Rolle - T4
Code	330438-00

Length (mm)	460 mm
Width (mm)	300 mm
Height (mm)	125 mm
Weight (Kg)	7.6 kg

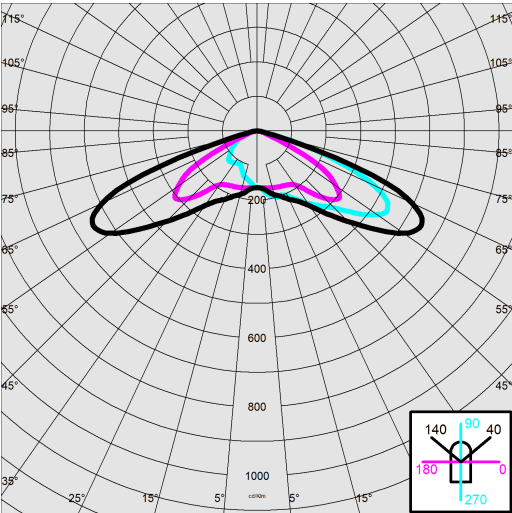
Diameter (Ø) of pole connector (mm)	46-76 mm
Surface exposed to wind (mm)	L 54800 mm <sup>2</sup> , F 143100 mm <sup>2</sup>

Voltage type	AC
Min Voltage (V)	220 V
Max Voltage (V)	240 V
Min Frequency (Hz)	50 Hz
Max Frequency (Hz)	60 Hz
Frequency (Hz)	50 Hz
Wiring name	CLD
Power factor	≥0.9
Rated Current	350 mA
Surge protector (common) (EN 61547)	6 kV, 10 kV
Insulation class	Class II
Controllability	None

3283 - Rolle - T4

Code: 330438-00

PHOTOMETRIC DATA



Distribution type	Asymmetric
Lighting source	LED
CRI	70
Luminous flux (output) (lm)	8758 lm
Power absorption (total) (W)	60 W
CCT	4000 K
Luminous efficacy (lm/W)	146 lm/W
Low Flicker	luminaire with very low flicker: evenly distributed light for greater visual safety.
LED flux maintenance	100000 hr, L 90, B 10

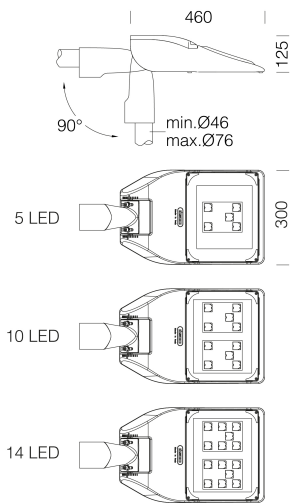
MECHANICAL CHARACTERISTICS

Impact resistance rating (IK)	IK09
IP	66
Ambient temperature - min	-30 °C
Ambient temperature - max	40 °C

3283 - Rolle - T4

Code: 330438-00

MATERIALS AND COLOURS



DOWNLOAD

MOUNTS

AssemblyInstructions rolle 11-23.pdf

DESIGNS

TechnicalDrawing rolle1.dxf



Housing	in die-cast aluminium and designed with a very small surface exposed to wind. Cooling fins integrated in the cover.
Optics	in high-performance PMMA resistant to high temperatures and UV rays. Flow recuperators in polycarbonate.
Diffuser	extra-clear, tempered glass, 4 mm thick, resistant to thermal shock and impact (UNI-EN 12150-1:2001).
Heat sink	the heat sink is designed and made to allow the LEDs to operate at temperatures capable of ensuring excellent performance/output and long service life.
Pole connection	in die-cast aluminium with clamps for fastening the fixture at different angles. Adjustable from 0° to 20° for side-mount applications; and from 0° to 15° for top-mount applications. Tilt pitch 5°. Suitable for 46-76 mm diameter poles.
Coating	the fully automated powder-coating cycle involves a polyester-based, salt-spray corrosion-resistant and UV-stabilised paint., Grey = RAL 9006
Special coating (UPON REQUEST)	Upon request: protective coating recommended for marine environments within 5 km (3 miles) of the sea.
Colour	Grey
Equipment	<ul style="list-style-type: none"> <li>- waterproof connector for quick installation with no need to open the fixture.</li> <li>- anti-condensation valve.</li> <li>- temperature controller with auto-reset.</li> <li>- EN 61547 compliant surge protection.</li> <li>- CLD PROG built-in functions.</li> </ul>

STANDARDS AND COMPLIANCE

Photobiological safety class	RG0 Ethr
Markings and tests	CE, ENEC
Reference standards	EN60598-1. They have a degree of protection according to the EN60529 standard.
Laboratory Tests	compliant with third-party certified vibration tests pursuant to ANSI C136.31: Street Lighting - Luminaire Vibration. Test level: 3.0G Level 2 for bridge/overpass applications.
Energy Label	C

GEAR

Upon request	protection of up to 10KV.
--------------	---------------------------

WARRANTY

After sales warranty	5 yr
----------------------	------

3283 - Rolle - T4

Code: 330438-00



504 Single arm



508 Double arm



1481 steel conical pole to be buried



1480 steel conical pole with base



1508 Fluted pole Ø 120 with base



1509 Fluted pole Ø 120



1408 Fluted pole Ø 100 with base



1409 Fluted pole Ø 100