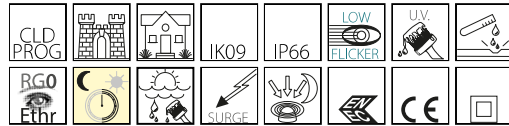


## 3350 - Garda 1 - HE - bi-symmetric

Code: 330510-39

### GENERAL INFORMATION



Article	3350 - Garda 1 - HE - bi-symmetric
Code	330510-39

### DIMENSIONS AND WEIGHT

Height (mm)	620 mm
Diameter (Ø) (mm)	420 mm
Weight (Kg)	5.5 kg

### INSTALLATION

Diameter (Ø) of pole connector (mm)	60-76 mm
Surface exposed to wind (mm)	L 76900 mm <sup>2</sup> , F 125600 mm <sup>2</sup>

### ELECTRICAL CHARACTERISTICS AND CONTROLS

Voltage type	AC
Min Voltage (V)	220 V
Max Voltage (V)	240 V
Min Frequency (Hz)	50 Hz
Max Frequency (Hz)	60 Hz
Frequency (Hz)	50 Hz
Wiring name	CLD
Power factor	≥0.9
Rated Current	520 mA
Surge protector (common) (EN 61547)	6 kV, 10 kV
Insulation class	Class II
Controllability	None



High energy efficiency and excellent light quality are the fundamental requirements for LED urban lighting that represents the true transition to an environmentally friendly technology capable of improving the quality of life in small and large cities.

In addition their unique design, these new versions revised their wattages to increase efficiency, and their optical system was designed to control potential glare due to the LED increasing light intensity.

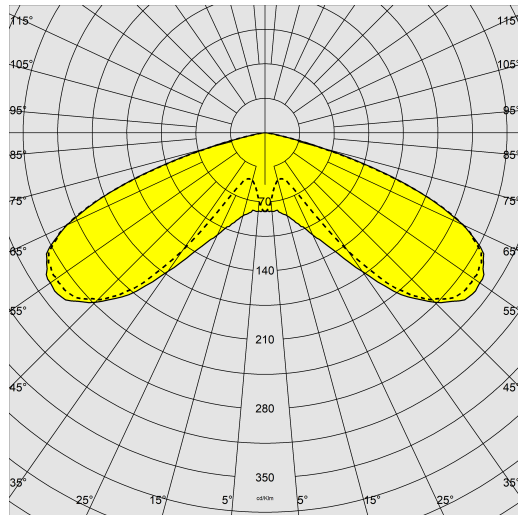
The versions with 4000K or warmer 3000K light enable creating lighting projects with very good results in terms of investment, management costs and user satisfaction.



## 3350 - Garda 1 - HE - bi-symmetric

Code: 330510-39

### PHOTOMETRIC DATA



Lighting source	LED
CRI	70
Luminous flux (output) (lm)	3330 lm
Power absorption (total) (W)	24 W
CCT	3000 K
Luminous efficacy (lm/W)	139 lm/W
Low Flicker	luminaire with very low flicker: evenly distributed light for greater visual safety.
Colour consistency	SDCM4
LED flux maintenance	100000 hr, L 90, B 10

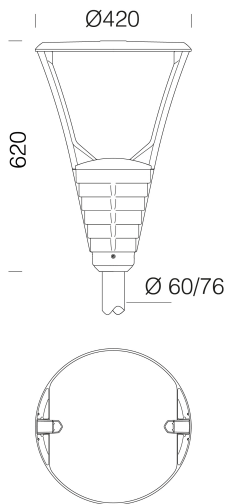
### MECHANICAL CHARACTERISTICS

Impact resistance rating (IK)	IK09
IP	66
Ambient temperature - min	-40 °C
Ambient temperature - max	50 °C

## 3350 - Garda 1 - HE - bi-symmetric

Code: 330510-39

### MATERIALS AND COLOURS



### DOWNLOAD

#### MOUNTS

[AssemblyInstructions garda iseo como 12-23.pdf](#)

#### DESIGNS

[BIM 3350 Garda 1 - 12-24.zip](#)

[TechnicalDrawing garda.dxf](#)



Housing	die-cast aluminium, designed with a very small surface exposed to wind.
Optics	in high-performance PMMA resistant to high temperatures and UV rays.
Diffuser	tempered glass, 4 mm thick, resistant to thermal shock and impact (UNI EN 12150-1:2001).
Heat sink	the heat sink is designed and made to allow the LEDs to operate at temperatures capable of ensuring excellent performance/output and long service life.
Pole connection	suited for poles with a diameter between 60 and 76 mm.
Coating	the fully automated powder-coating cycle involves a polyester-based, salt-spray corrosion-resistant and UV-stabilised paint., anthracite = RAL 7021
Special coating (UPON REQUEST)	Upon request: protective coating recommended for marine environments within 5 km (3 miles) of the sea.
Colour	Anthracite
Equipment	<ul style="list-style-type: none"> <li>- waterproof connector for quick installation with no need to open the fixture.</li> <li>- anti-condensation valve.</li> <li>- temperature controller with auto-reset.</li> <li>- EN 61547 compliant surge protection.</li> <li>- BASIC PROG built-in functions.</li> </ul>

### EMERGENCY LIGHTING

Emergency power supply type	Not present
-----------------------------	-------------

### STANDARDS AND COMPLIANCE

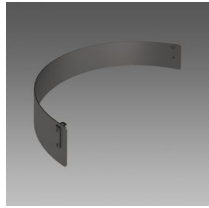
Photobiological safety class	RG0 Ethr
Markings and tests	CE, ENEC
Reference standards	EN60598-1. They have a degree of protection according to the EN60529 standard.
Energy Label	C

### WARRANTY

After sales warranty	5 yr
----------------------	------

## 3350 - Garda 1 - HE - bi-symmetric

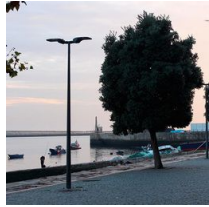
Code: 330510-39



109 Anti-glare shield



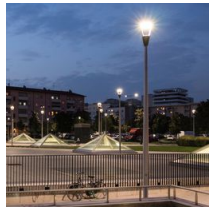
1278 Conical



1481 steel conical pole to be buried



1480 steel conical pole with base



1478 Urban Pole to be buried



1477 Urban Pole - with base



1408 Fluted pole  $\varnothing$  100 with base



1409 Fluted pole  $\varnothing$  100



1508 Fluted pole  $\varnothing$  120 with base



1509 Fluted pole  $\varnothing$  120