

3380 - Susa ME - street

Code: 340500-39

GENERAL INFORMATION



Article	3380 - Susa ME - street
Code	340500-39

DIMENSIONS AND WEIGHT

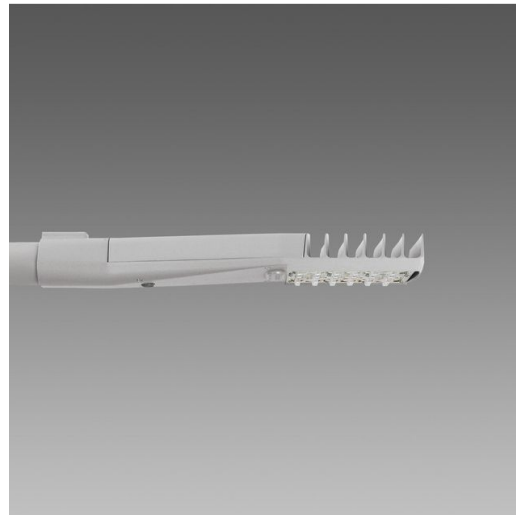
Length (mm)	540 mm
Width (mm)	156 mm
Height (mm)	80 mm
Weight (Kg)	2.42 kg

INSTALLATION

Diameter (Ø) of pole connector (mm)	45-60 mm
Surface exposed to wind (mm)	L 32600 mm ² , F 65900 mm ²

ELECTRICAL CHARACTERISTICS AND CONTROLS

Voltage type	AC
Min Voltage (V)	220 V
Max Voltage (V)	240 V
Min Frequency (Hz)	50 Hz
Max Frequency (Hz)	60 Hz
Frequency (Hz)	50 Hz
Wiring name	CLD
Power factor	≥0.9
Rated Current	530 mA
Surge protector (common) (EN 61547)	6 kV, 10 kV
Insulation class	Class II
Controllability	None



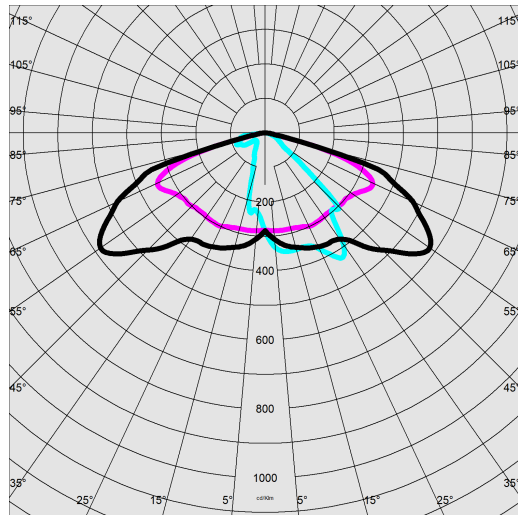
One of the newest additions to the Disano street lighting range, Susa is a luminaire with a uniquely clean design delivering good results in any setting. Available in different versions, it may come with street optics, and versions for cycle lanes, and for pedestrian crossings. It features latest generation LEDs that combine efficiency and colour quality with a temperature of 3000/4000K and CRI70.



3380 - Susa ME - street

Code: 340500-39

PHOTOMETRIC DATA



Distribution type	Medium / Comfort
Lighting source	LED
CRI	70
Luminous flux (output) (lm)	5837 lm
Power absorption (total) (W)	40 W
CCT	3000 K
Luminous efficacy (lm/W)	146 lm/W
Low Flicker	luminaire with very low flicker: evenly distributed light for greater visual safety.
LED flux maintenance	100000 hr, L 80, B 10

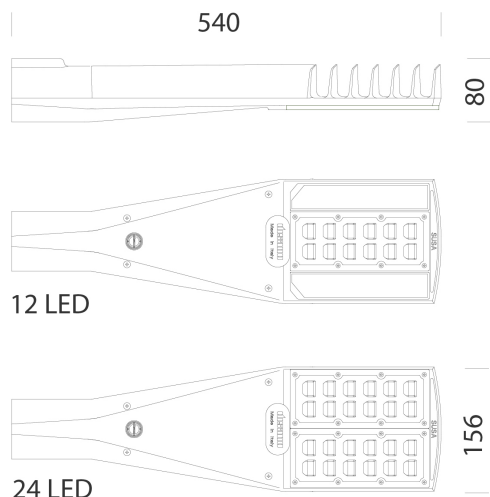
MECHANICAL CHARACTERISTICS

Impact resistance rating (IK)	IK07
IP	66
Ambient temperature - min	-30 °C
Ambient temperature - max	40 °C



3380 - Susa ME - street

Code: 340500-39



[DOWNLOAD](#)

MOUNTS

[AssemblyInstructions susa 03-23.pdf](#)

DESIGNS

[BIM 3380 Susa ME - street type - 20200224.zip](#)

[TechnicalDrawing susa-.dxf](#)

[TechnicalDrawing3D disano 3380 susa 24led.3ds](#)



MATERIALS AND COLOURS

Housing	in die-cast aluminium and designed with a very small surface exposed to wind. Cooling fins integrated in the cover.
Optics	in high-performance PMMA resistant to high temperatures and UV rays.
Heat sink	the heat sink is designed and made to allow the LEDs to operate at temperatures capable of ensuring excellent performance/output and long service life.
Pole connection	die-cast aluminium with screws for locking the fixture. Suitable for poles with a diameter of 45-60 mm.
Coating	pre-treatment of metal surface, polyester powder coating to ensure resistance to corrosion and salt spray fogs, UV stabilised.
Special coating (UPON REQUEST)	upon request: available with coating tested to withstand corrosion tests in aggressive artificial atmospheres (UNI EN ISO 9227) or marine environments (sea front).
Colour	Grey
Equipment	<ul style="list-style-type: none"> - IP67 quick connector. - anti-condensation valve. - temperature controller with auto-reset. - EN 61547 compliant surge protection. - BASIC PROG built-in functions.

STANDARDS AND COMPLIANCE

Photobiological safety class	RG0 Ethr
Markings and tests	CE, ENEC
Reference standards	EN60598-1. With degree of protection according to EN60529.
Energy Label	C

GEAR

Upon request	<ul style="list-style-type: none"> - 1-10V dimmable power supply, subcode 12 - virtual midnight device, subcode 30 - power line carrier, subcode 0078 - Nema Socket, subcode 40 - Zhaga Socket, subcode 0054
--------------	---

WARRANTY

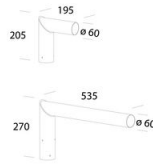
After sales warranty	5 yr
----------------------	------

3380 - Susa ME - street

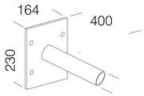
Code: 340500-39



405 Adjustable Connection



205 Mast-top mount



248 Wall mount