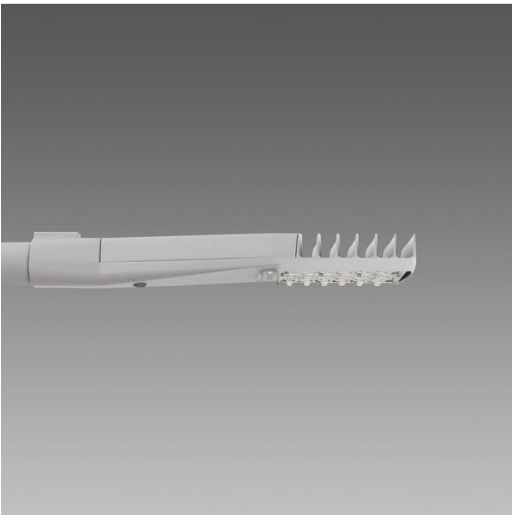


3380 - Susa ME - street

Code: 340505-00



One of the newest additions to the Disano street lighting range, Susa is a luminaire with a uniquely clean design delivering good results in any setting. Available in different versions, it may come with street optics, and versions for cycle lanes, and for pedestrian crossings. It features latest generation LEDs that combine efficiency and colour quality with a temperature of 3000/4000K and CRI70.



GENERAL INFORMATION

| | |
|---------|-------------------------|
| Article | 3380 - Susa ME - street |
| Code | 340505-00 |

DIMENSIONS AND WEIGHT

| | |
|-------------|---------|
| Length (mm) | 540 mm |
| Width (mm) | 156 mm |
| Height (mm) | 80 mm |
| Weight (Kg) | 2.76 kg |

INSTALLATION

| | |
|-------------------------------------|--------------------------|
| Diameter (Ø) of pole connector (mm) | 45-60 mm |
| Surface exposed to wind (mm) | L 32600 mm², F 65900 mm² |

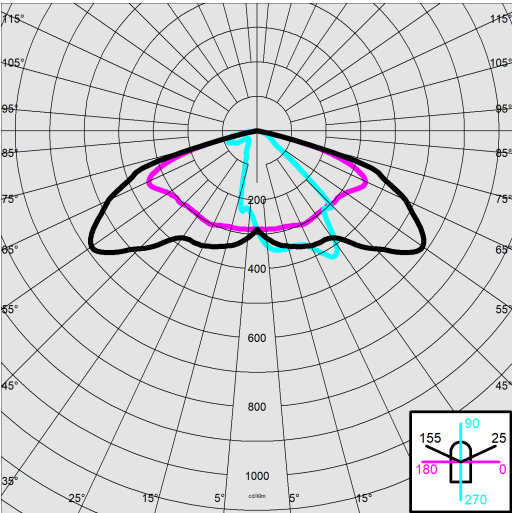
ELECTRICAL CHARACTERISTICS AND CONTROLS

| | |
|-------------------------------------|-------------|
| Voltage type | AC |
| Min Voltage (V) | 220 V |
| Max Voltage (V) | 240 V |
| Min Frequency (Hz) | 50 Hz |
| Max Frequency (Hz) | 60 Hz |
| Frequency (Hz) | 50 Hz |
| Wiring name | CLD |
| Power factor | ≥0.9 |
| Rated Current | 350 mA |
| Surge protector (common) (EN 61547) | 6 kV, 10 kV |
| Insulation class | Class II |
| Controllability | None |

3380 - Susa ME - street

Code: 340505-00

PHOTOMETRIC DATA



| | |
|------------------------------|--|
| Distribution type | Medium / Comfort |
| Lighting source | LED |
| CRI | 70 |
| Luminous flux (output) (lm) | 8530 lm |
| Power absorption (total) (W) | 52 W |
| CCT | 4000 K |
| Luminous efficacy (lm/W) | 164 lm/W |
| Low Flicker | luminaire with very low flicker: evenly distributed light for greater visual safety. |
| LED flux maintenance | 100000 hr, L 80, B 10 |

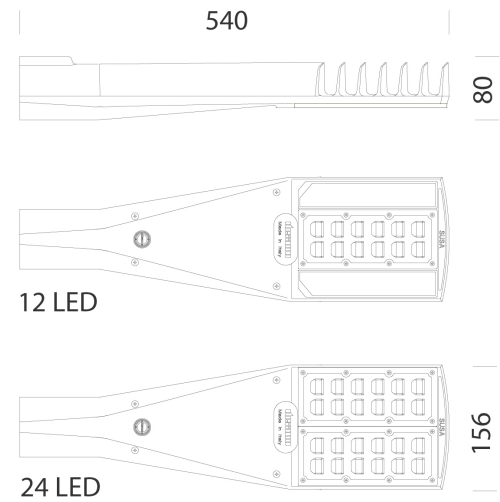
MECHANICAL CHARACTERISTICS

| | |
|-------------------------------|--------|
| Impact resistance rating (IK) | IK07 |
| IP | 66 |
| Ambient temperature - min | -30 °C |
| Ambient temperature - max | 40 °C |

3380 - Susa ME - street

Code: 340505-00

MATERIALS AND COLOURS



DOWNLOAD

MOUNTS
AssemblyInstructions susa 03-23.pdf

DESIGNS
TechnicalDrawing susa-.dxf



| | |
|--------------------------------|--|
| Housing | in die-cast aluminium and designed with a very small surface exposed to wind. Cooling fins integrated in the cover. |
| Optics | in high-performance PMMA resistant to high temperatures and UV rays. |
| Heat sink | the heat sink is designed and made to allow the LEDs to operate at temperatures capable of ensuring excellent performance/output and long service life. |
| Pole connection | die-cast aluminium with screws for locking the fixture. Suitable for poles with a diameter of 45-60 mm. |
| Coating | pre-treatment of metal surface, polyester powder coating to ensure resistance to corrosion and salt spray fogs, UV stabilised. |
| Special coating (UPON REQUEST) | upon request: available with coating tested to withstand corrosion tests in aggressive artificial atmospheres (UNI EN ISO 9227) or marine environments (sea front). |
| Colour | Grey |
| Equipment | <ul style="list-style-type: none">- waterproof connector for quick installation with no need to open the fixture.- anti-condensation valve.- temperature controller with auto-reset.- EN 61547 compliant surge protection.- BASIC PROG built-in functions. |

STANDARDS AND COMPLIANCE

| | |
|------------------------------|--|
| Photobiological safety class | RG0 Ethr |
| Markings and tests | CE, ENEC |
| Reference standards | EN60598-1. With degree of protection according to EN60529. |
| Energy Label | C |

GEAR

| | |
|--------------|---|
| Upon request | <ul style="list-style-type: none">- 1-10V dimmable power supply, subcode 12- virtual midnight device, subcode 30- power line carrier, subcode 0078- Nema Socket, subcode 40- Zhaga Socket, subcode 0054 |
|--------------|---|

WARRANTY

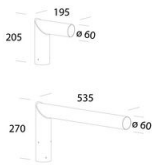
| | |
|----------------------|------|
| After sales warranty | 5 yr |
|----------------------|------|

3380 - Susa ME - street

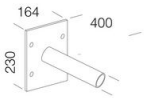
Code: 340505-00



405 Adjustable Connection



205 Mast-top mount



248 Wall mount