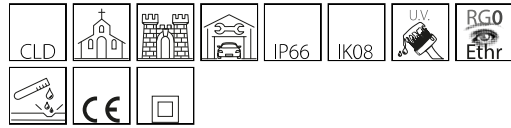


## 1775 - Sicura - elliptical LED

Code: 414236-00

### GENERAL INFORMATION



Article	1775 - Sicura - elliptical LED
Code	414236-00

### DIMENSIONS AND WEIGHT

Length (mm)	640 mm
Width (mm)	70 mm
Height (mm)	90 mm
Weight (Kg)	3 kg

### INSTALLATION

Surface exposed to wind (mm)	L 45000 mm <sup>2</sup> , F 58000 mm <sup>2</sup>
------------------------------	---

### ELECTRICAL CHARACTERISTICS AND CONTROLS

Voltage type	AC
Min Voltage (V)	220 V
Max Voltage (V)	240 V
Min Frequency (Hz)	50 Hz
Max Frequency (Hz)	60 Hz
Frequency (Hz)	50 Hz
Wiring name	CLD
Power factor	≥0.9
Insulation class	Class II
Controllability	None



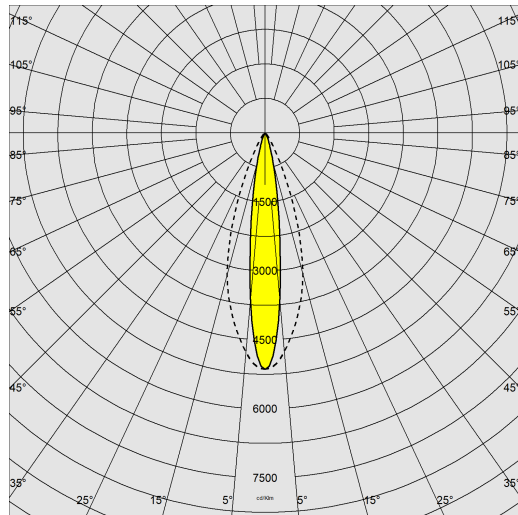
The excellent performance of this luminaire in terms of energy saving and luminous efficiency is accompanied by a long service life, with IP66 protection for outdoor installations. It is a full-range product to meet all lighting design requirements.



## 1775 - Sicura - elliptical LED

Code: 414236-00

### PHOTOMETRIC DATA



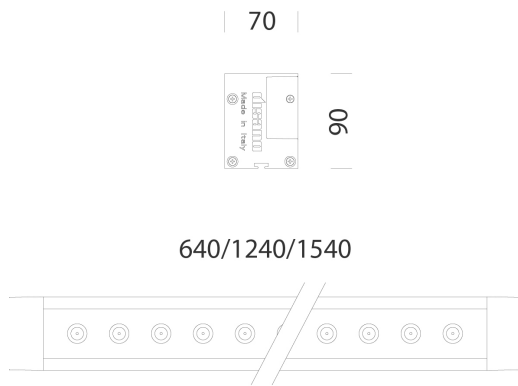
Distribution type	Elliptical Beam
Lighting source	LED
CRI	≥70
Luminous flux (output) (lm)	3148 lm
Power absorption (total) (W)	31 W
CCT	4000 K
Luminous efficacy (lm/W)	102 lm/W
Low Flicker	luminaire with very low flicker: evenly distributed light for greater visual safety.
LED flux maintenance	80000 hr, L 80, B 20

### MECHANICAL CHARACTERISTICS

Impact resistance rating (IK)	IK08
IP	66
Ambient temperature - min	-30 °C
Ambient temperature - max	40 °C

# 1775 - Sicura - elliptical LED

Code: 414236-00



## DOWNLOAD

### MOUNTS

[AssemblyInstructions 1768-1769-1775 04-23.pdf](#)

### DESIGNS

[BIM 1775 Sicura.zip](#)

[TechnicalDrawing 1775n.dxf](#)



## MATERIALS AND COLOURS

Housing	in extruded aluminium with die-cast aluminium end caps.
Optics	in high-performance PMMA resistant to high temperatures and UV rays.
Diffuser	tempered glass, 8 mm thick, resistant to thermal shock and impact (UNI EN 12150-1:2001).
Heat sink	built-in.
Coating	the fully automated powder-coating cycle involves a polyester-based, salt-spray corrosion-resistant and UV-stabilised paint.
Special coating (UPON REQUEST)	Upon request: protective coating recommended for marine environments within 5 km (3 miles) of the sea.
Colour	Grey
Equipment	- waterproof connector for quick installation with no need to open the fixture. - electrical cable (1 m long) for quick installation.

## STANDARDS AND COMPLIANCE

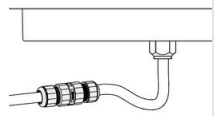
Photobiological safety class	RG0
Markings and tests	CE
Reference standards	EN60598-1. They have a degree of protection according to the EN60529 standard.
Energy Label	D

## WARRANTY

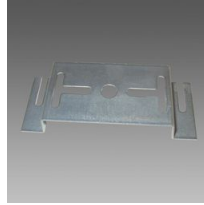
After sales warranty	5 yr
----------------------	------

## 1775 - Sicura - elliptical LED

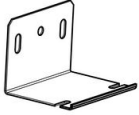
Code: 414236-00



**339 Connector**



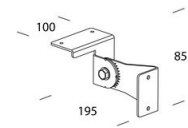
**376 Ceiling mount**



**536 Wall mount**



**535 Adjustable bracket**



**537 Adjustable bracket**