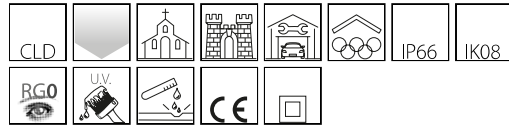


1769 - Sicura - FL symmetric LED

Code: 414262-39

GENERAL INFORMATION



Article	1769 - Sicura - FL symmetric LED
Code	414262-39

DIMENSIONS AND WEIGHT

Length (mm)	655 mm
Width (mm)	70 mm
Height (mm)	90 mm
Weight (Kg)	2.9 kg

INSTALLATION

Surface exposed to wind (mm)	L 46000 mm ² , F 59000 mm ²
------------------------------	---

ELECTRICAL CHARACTERISTICS AND CONTROLS

Voltage type	AC
Min Voltage (V)	220 V
Max Voltage (V)	240 V
Min Frequency (Hz)	50 Hz
Max Frequency (Hz)	60 Hz
Frequency (Hz)	50 Hz
Wiring name	CLD
Power factor	≥0.9
Insulation class	Class II
Controllability	None



The excellent performance of this luminaire in terms of energy saving and luminous efficiency is accompanied by a long service life, with IP66 protection for outdoor installations. It is a full-range product to meet all lighting design requirements.



1769 - Sicura - FL symmetric LED

Code: 414262-39

PHOTOMETRIC DATA



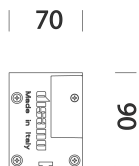
Distribution type	Symmetric wide beam
Lighting source	LED
CRI	≥80
Luminous flux (output) (lm)	2916 lm
Power absorption (total) (W)	22 W
CCT	3000 K
Low Flicker	luminaire with very low flicker: evenly distributed light for greater visual safety.
Beam angle	60 °
LED flux maintenance	80000 hr, L 80, B 20

MECHANICAL CHARACTERISTICS

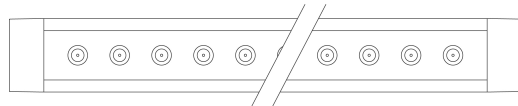
Impact resistance rating (IK)	IK08
IP	66
Ambient temperature - min	-30 °C
Ambient temperature - max	40 °C

1769 - Sicura - FL symmetric LED

Code: 414262-39



655-1215-1495



DOWNLOAD

MOUNTS

[AssemblyInstructions 1768-1769-1775 04-23.pdf](#)

DESIGNS

[BIM 1769 Sicura.zip](#)

[TechnicalDrawing 1768x.dxf](#)



MATERIALS AND COLOURS

Housing	in extruded aluminium with die-cast aluminium end caps.
Optics	in high-performance PMMA resistant to high temperatures and UV rays.
Diffuser	tempered glass, 8 mm thick, resistant to thermal shock and impact (UNI EN 12150-1:2001).
Heat sink	built-in.
Coating	the fully automated powder-coating cycle involves a polyester-based, salt-spray corrosion-resistant and UV-stabilised paint.
Special coating (UPON REQUEST)	Upon request: protective coating recommended for marine environments within 5 km (3 miles) of the sea.
Colour	Grey
Equipment	- waterproof connector for quick installation with no need to open the fixture. - electrical cable (1 m long) for quick installation.

STANDARDS AND COMPLIANCE

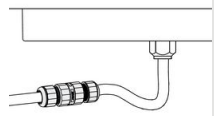
Photobiological safety class	RG0
Markings and tests	CE
Reference standards	EN60598-1. They have a degree of protection according to the EN60529 standard.
Energy Label	C

WARRANTY

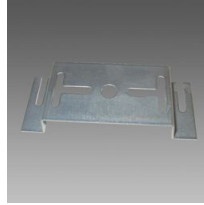
After sales warranty	5 yr
----------------------	------

1769 - Sicura - FL symmetric LED

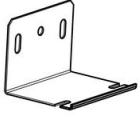
Code: 414262-39



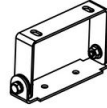
339 Connector



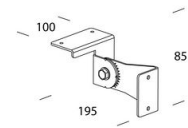
376 Ceiling mount



536 Wall mount



535 Adjustable bracket



537 Adjustable bracket