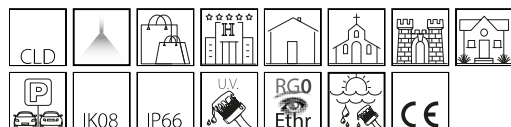


1576 - Square - direct-indirect light FS

Code: 420647-00

GENERAL INFORMATION



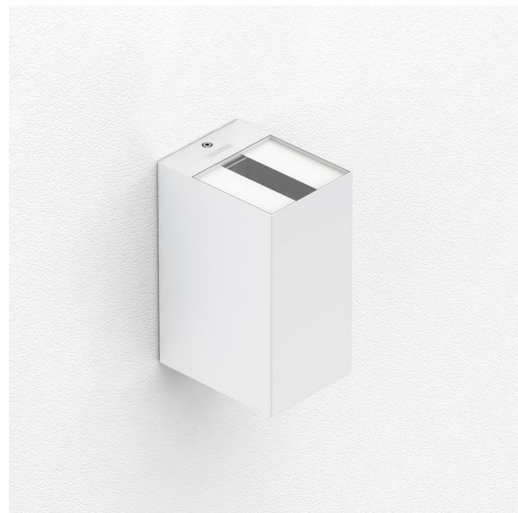
Article	1576 - Square - direct-indirect light FS
Code	420647-00

DIMENSIONS AND WEIGHT

Length (mm)	126 mm
Width (mm)	98 mm
Height (mm)	190 mm
Weight (Kg)	2.2 kg

ELECTRICAL CHARACTERISTICS AND CONTROLS

Voltage type	AC
Min Voltage (V)	220 V
Max Voltage (V)	240 V
Min Frequency (Hz)	50 Hz
Max Frequency (Hz)	60 Hz
Frequency (Hz)	50 Hz
Wiring name	CLD
Power factor	≥0.92
Insulation class	Class I
Controllability	None



Today, lighting is asked to do more than ever. To effectively illuminate a room, in addition to providing the necessary amount of light, proper attention must also be paid to aesthetics, luminaire design and light distribution. Without forgetting sustainable energy consumption. Square is the new LED luminaire designed to always provide the best lighting quality, with maximum reliability in every context, whether outdoor or indoor.

In the wall-mounted version, with direct and indirect light, Square ensures maximum functionality and aesthetics with very low consumption, in different versions to achieve the best light distribution. The sturdiness of the materials, with a die-cast aluminum housing and tempered glass diffuser resistant to thermal shock and impact, also makes this product ideal for outdoor use.

It's easy installation, without the need to open the fixture, makes Square LED particularly suited to illuminate a facade with class and elegance.

The Square range also includes a spotlight version, with lens or fully adjustable square optics to achieve the desired lighting scenario.

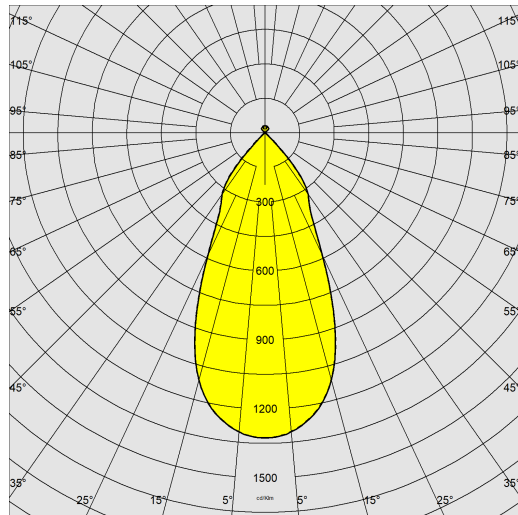
Luminaires are equipped with LEDs that ensure a very long lifespan, low consumption and high light quality.



1576 - Square - direct-indirect light FS

Code: 420647-00

PHOTOMETRIC DATA



Lighting source LED COB

CRI 80

Luminous flux (output) (lm) 1791 lm

Power absorption (total) (W) 14 W

CCT 4000 K

Luminous efficacy (lm/W) 128 lm/W

LED flux maintenance 50000 hr, L 90, B 10

MECHANICAL CHARACTERISTICS

Impact resistance rating (IK) IK08

IP 66

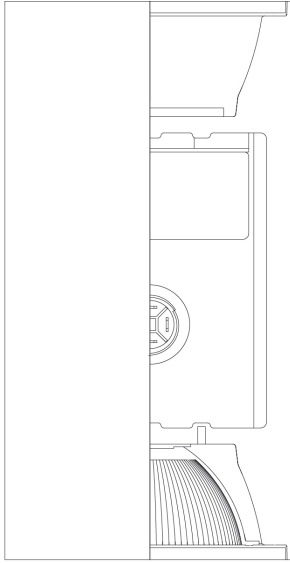


1576 - Square - direct-indirect light FS

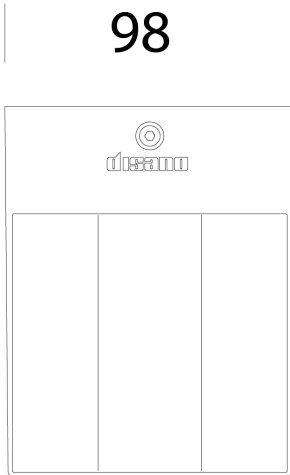
Code: 420647-00

MATERIALS AND COLOURS

190



126



98

[DOWNLOAD](#)

MOUNTS

[AssemblyInstructions square 09-22.pdf](#)

DESIGNS

[TechnicalDrawing 1576.dxf](#)

[TechnicalDrawing3D disano 1576 square.3ds](#)



Housing	in die-cast aluminium.
Optics	in high-performance metallised polycarbonate.
Diffuser	extra-clear, tempered glass, 4 mm thick, resistant to thermal shock and impact (UNI-EN 12150-1:2001).
Coating	the fully automated powder-coating cycle involves a polyester-based, salt-spray corrosion-resistant and UV-stabilised paint.
Special coating (UPON REQUEST)	Upon request: protective coating recommended for marine environments within 5 km (3 miles) of the sea.
Colour	Graphite
Equipment	- with wall mounting plate. - complete with waterproof connector for line connection.
Luminous flux maintenance 70%: 100.000h (L70B50) o luminous flux maintenance 90%: 50.000h (L90B10).	

EMERGENCY LIGHTING

Emergency power supply type	Not present
-----------------------------	-------------

STANDARDS AND COMPLIANCE

Photobiological safety class	RG0
Markings and tests	CE
Reference standards	EN60598-1. They have a degree of protection according to the EN60529 standard.
Energy Label	D

GEAR

Sensors	
Upon request	1/10 DIMM or DALI versions.

WARRANTY

After sales warranty	3 yr
----------------------	------