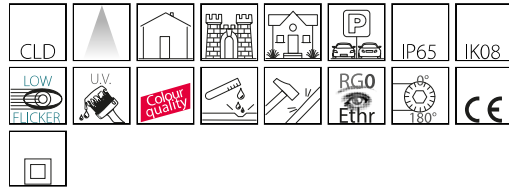


# 1564 - Elfo LED - FS - COB

Code: 422394-00

## GENERAL INFORMATION



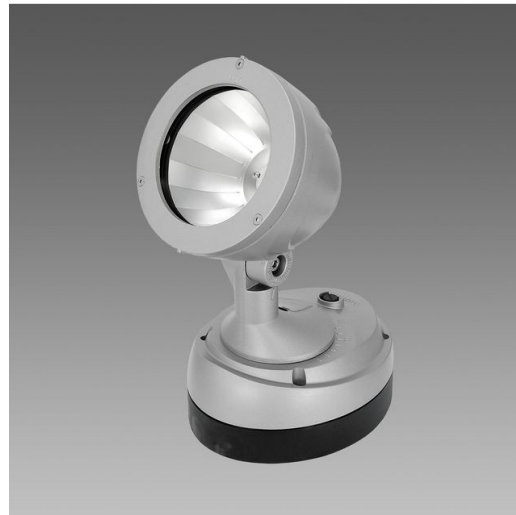
Article	1564 - Elfo LED - FS - COB
Code	422394-00

## DIMENSIONS AND WEIGHT

Length (mm)	200 mm
Width (mm)	150 mm
Height (mm)	300 mm
Diameter (Ø) (mm)	150 mm
Weight (Kg)	2.674 kg

## ELECTRICAL CHARACTERISTICS AND CONTROLS

Voltage (V)	230 V
Frequency (Hz)	50 Hz
Wiring	CLD
Power factor	≥0.9
Current (mA)	1050 mA
Surge protector (common) (EN 61547)	1 kV, 2 kV
Insulation class	Class II
Controllability	None



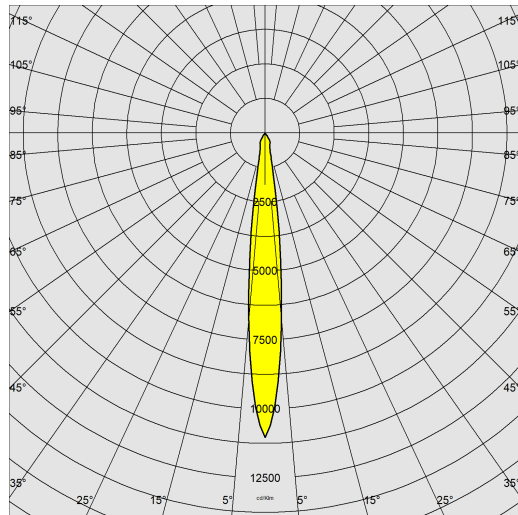
A complete product that meets needs and wishes of lighting designers.



## 1564 - Elfo LED - FS - COB

Code: 422394-00

### PHOTOMETRIC DATA



Lighting source	LED COB
CRI	90
Luminous flux (output) (lm)	3531 lm
Power absorption (total) (W)	41 W
CCT	4000 K
Luminous efficacy (lm/W)	86 lm/W
Beam angle (°)	15 °
LED flux maintenance	50000 hr, L 80, B 20

### MECHANICAL CHARACTERISTICS

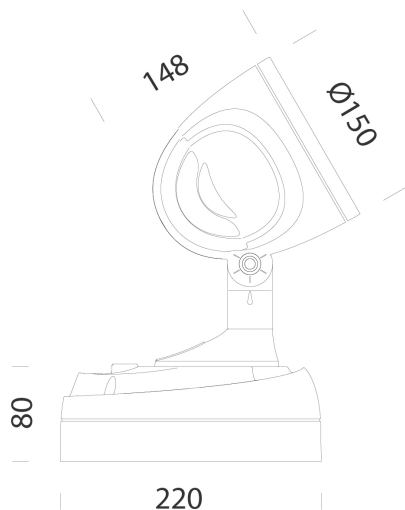
Impact resistance rating (IK)	IK08
IP	65



# 1564 - Elfo LED - FS - COB

Code: 422394-00

## MATERIALS AND COLOURS



### DOWNLOAD

#### MOUNTS

[AssemblyInstructions Elfo 03-23.pdf](#)

#### DESIGNS

[TechnicalDrawing elfoled.dxf](#)

[TechnicalDrawing3D disano 1564 elfo.3ds](#)



Housing	in die-cast aluminium with cooling fins integrated in the cover.
Optics	in high-performance silver-coated aluminium.
Diffuser	tempered glass, 4 mm thick, resistant to thermal shock and impact (UNI EN 12150-1:2001).
Coating	pre-treatment of metal surface, epoxy-based cataphoresis treatment to ensure resistance to corrosion and salt spray fogs, a second final hand of liquid two-component acrylic coating, UV stabilised.
Colour	Grey9007
Equipment	silicone and EPDM rubber sealing gasket. Rubber cable gland Ø 1/2 gas inch.

## STANDARDS AND COMPLIANCE

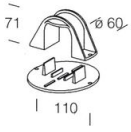
Photobiological safety class	RG0 Ethr
Markings and tests	CE
Reference standards	EN60598-1. With degree of protection according to EN60529.

## WARRANTY

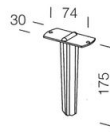
After sales warranty	2 yr
----------------------	------

# 1564 - Elfo LED - FS - COB

Code: 422394-00



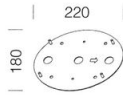
**120 Pole support**



**119 Spike**



**116 Angle support**



**188 Board**