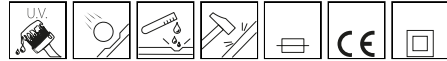


1480 - steel conical pole with base

Code: 425055-00

GENERAL INFORMATION



Article	1480 - steel conical pole with base
Code	425055-00

DIMENSIONS AND WEIGHT

Weight (Kg)	24 kg
-------------	-------



1480 palo conico in acciaio con base



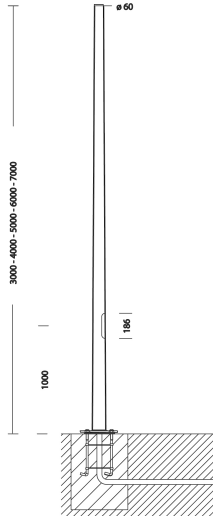
1480 - steel conical pole with base

Code: 425055-00



1480 - steel conical pole with base

Code: 425055-00



DOWNLOAD

MOUNTS

[AssemblyInstructions 1480-1481 09-18.pdf](#)

DESIGNS

[TechnicalDrawing 1480b.dxf](#)

[TechnicalDrawing3D disano 1480 tapered pole 7m.3ds](#)



MATERIALS AND COLOURS

Housing	Hot-rolled steel, $\varnothing 60$ mast-top connection. Version with the base requires the purchase of 4 anchor bolts to be buried. With 2 x 16A fuses, removable 4-pole/3-way terminal block = 10mm ² and 2.5 mm ² shunt. Standard with Insulation Class II.
Pole connection	0
Coating	thermoset polyester powder coated.
Colour	Graphite

STANDARDS AND COMPLIANCE

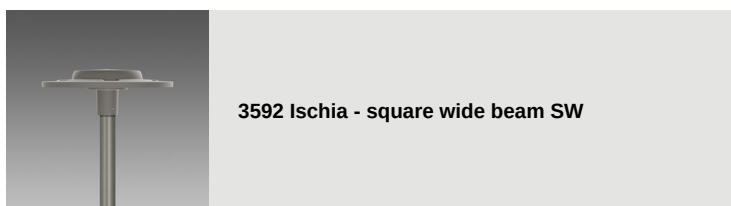
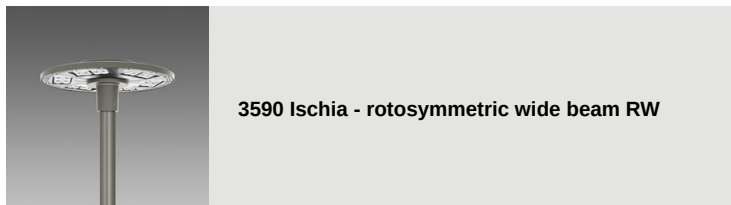
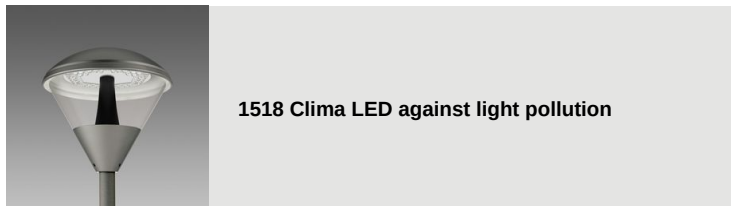
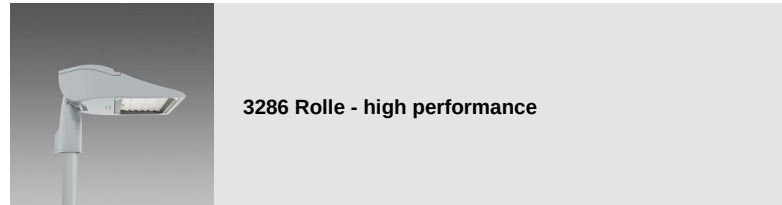
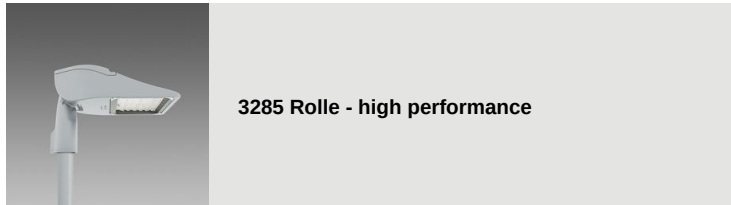
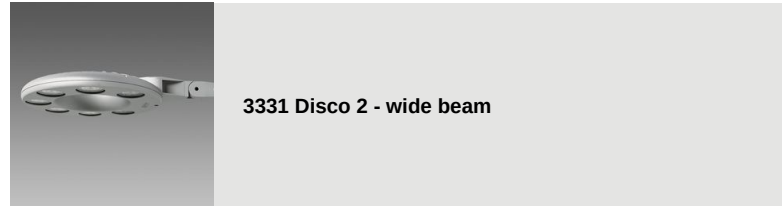
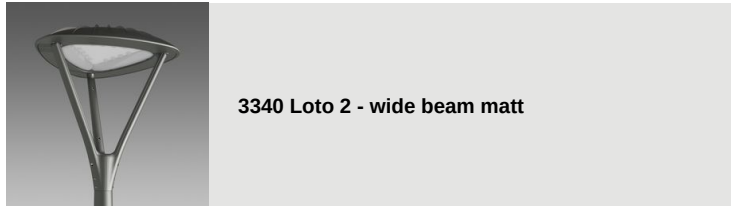
Markings and tests	CE
Laboratory Tests	The possibility of coupling a composition to the lamp post is subject to verification of the resistance to wind load, in the areas specified in Standard DM 14/01/2008 and according to the design load specifications in Standard EN 40-3-1.

WARRANTY

After sales warranty	0 yr
----------------------	------

1480 - steel conical pole with base

Code: 425055-00



1480 - steel conical pole with base

Code: 425055-00



3594 Ischia MIDNIGHT - cycle pedestrian symmetric CS



3595 Ischia MIDNIGHT - asymmetric medium beam AM



3593 Ischia - cycle-pedestrian asymmetric CA



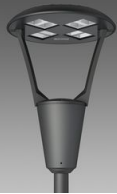
3593 Ischia MIDNIGHT - cycle-pedestrian asymmetric CA



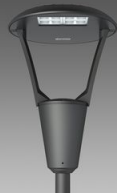
3596 Ischia - asymmetric wide beam AW



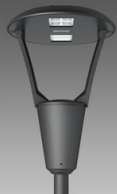
3595 Ischia - asymmetric medium beam AM



3360 Iseo 1 - roto-symmetric



3361 Iseo 2 - street



3362 Iseo 3 - centre street



3363 Iseo 4 - cycle lane



3383 Como 1 - roto-symmetric



3384 Como 2 - asymmetric



3385 Como 3 - cycle lane



3386 Como 4 - bi-asymmetric



3350 Garda 1 - roto-symmetric



3351 Garda 2 - asymmetric



3352 Garda 3 - cycle lane



3353 Garda 4 - cycle + street



3355 Garda 5 - roto-symmetric



3355 Garda 6 - roto-symmetric



3340 Loto 1 - wide beam transparent



3342 Loto 3 - asymmetric



3343 Loto 4 - cycle lane



3344 Loto 5 - wide beam



3345 Loto 6 - COB



3345 Loto 6 - MIDNIGHT COB



3280 Rolle - T1



3283 Rolle - T4



3284 Rolle - T5



3334 Disco 5 - central connection



3336 Visconti 2.0 - roto-symmetric



3337 Visconti 2.0 - street ME



3338 Visconti 2.0 - cycle lane



3339 Visconti 2.0 - large areas



3580 Volo - street - High Performance



3581 Volo - cycle + street



3582 Volo - cycle lane



3583 Volo - roto-symmetric



3281 Rolle - T2



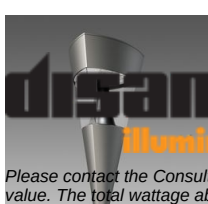
3282 Rolle - T3



1513 Torcia LED COB



1707 Torcia LED



1708 Torcia LED



1205 Polar



Please contact the Consulting and Design Centre for any technical information. The reported luminous flux is the flux emitted by the light source with a tolerance of $\pm 10\%$ compared to the indicated value. The total wattage absorbed by the system will not exceed 10% of the reported value. Technical lighting data may be subject to changes and improvements due to the fast evolution of the technology. Saturday, March 2, 2024