

1485 - pole with base

Code: 425074-00

GENERAL INFORMATION

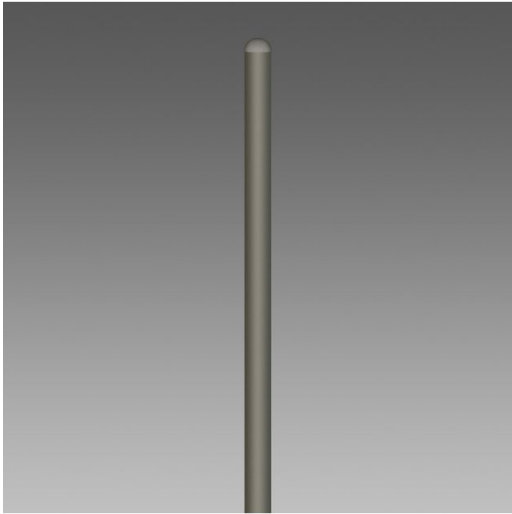
Article	1485 - pole with base
Code	425074-00

DIMENSIONS AND WEIGHT

Weight (Kg)	63 kg
-------------	-------

INSTALLATION

Diameter (Ø) of pole connector (mm)	102-102 mm
-------------------------------------	------------



Ø102 steel pole with a solid and essential profile, designed for lighting applications in residential, urban and architectural environments. The structure ensures high mechanical strength and long-term reliability. Available with base plate for surface installation or for in-ground installation for a stable and discreet fixing.



1485 - pole with base

Code: 425074-00



1485 - pole with base

Code: 425074-00

MATERIALS AND COLOURS

DOWNLOAD



Housing	Steel with \varnothing 102. Inspection window in die-cast aluminium (191x55mm), complete with 2 x 16A fuses, removable 4-pole terminal block. \varnothing 60 mm reduction. Requires the purchase of 4 anchor bolts to be buried.
Pole connection	102mm
Coating	thermoset polyester powder coated.
Colour	Graphite

STANDARDS AND COMPLIANCE

Markings and tests	CE
--------------------	----

WARRANTY

After sales warranty	0 yr
----------------------	------