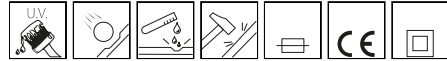


## 1509 - Fluted pole ø 120

Code: 426374-00

### GENERAL INFORMATION



Article	1509 - Fluted pole ø 120
Code	426374-00

### DIMENSIONS AND WEIGHT

Weight (Kg)	19 kg
-------------	-------

### INSTALLATION

Diameter (Ø) of pole connector (mm)	60-60 mm
-------------------------------------	----------



1509 Fluted pole ø 120



## 1509 - Fluted pole ø 120

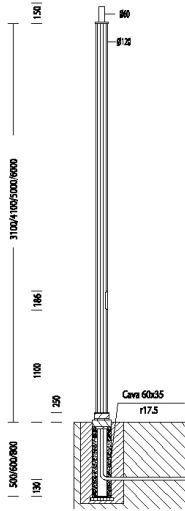
---

Code: 426374-00



# 1509 - Fluted pole $\varnothing$ 120

Code: 426374-00



## DOWNLOAD

### MOUNTS

[AssemblyInstructions 1508-1509.pdf](#)

### DESIGNS

[TechnicalDrawing 1509d.dxf](#)



## MATERIALS AND COLOURS

Housing	Fluted extruded aluminium, anodised by tin electroplating, 15/20 $\mu$ thick. Aluminium inspection window, with 2 x 16A fuses, 4-pole/3-way terminal block = 10 mm <sup>2</sup> shunt 2.5 mm <sup>2</sup> . Insulation Class II.
Pole connection	60mm
Coating	anodised by tin electroplating, 15/20 $\mu$ thick, natural oxidised colour or graphite painted.
Colour	Oxidised

## STANDARDS AND COMPLIANCE

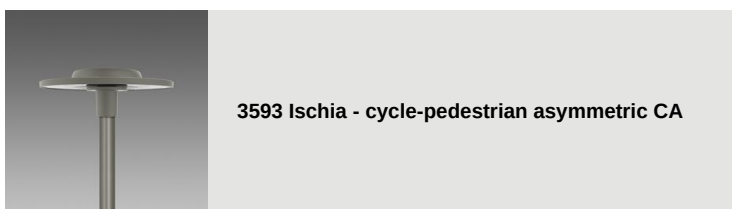
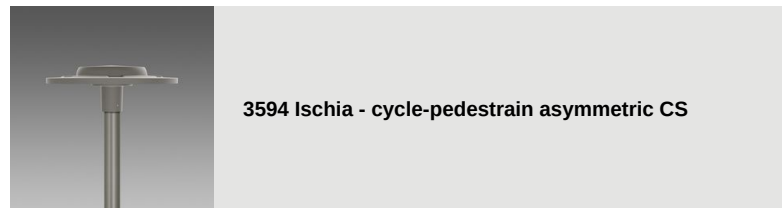
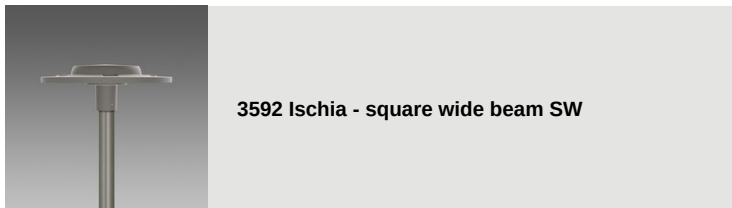
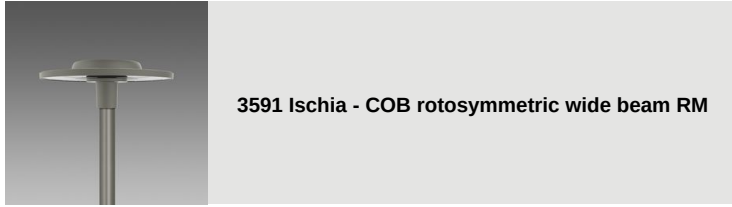
Markings and tests	CE
Laboratory Tests	The possibility of coupling a composition to the lamp post is subject to verification of the resistance to wind load, in the areas specified in Standard DM 14/01/2008 and according to the design load specifications in Standard EN 40-3-1.

## WARRANTY

After sales warranty	0 yr
----------------------	------

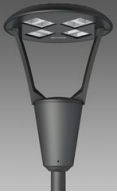
## 1509 - Fluted pole ø 120

Code: 426374-00

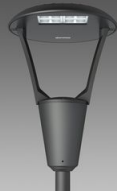


## 1509 - Fluted pole ø 120

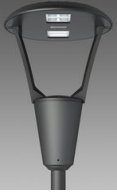
Code: 426374-00



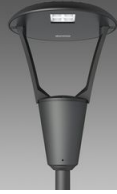
3360 Iseo 1 - roto-symmetric



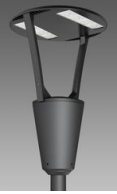
3361 Iseo 2 - street



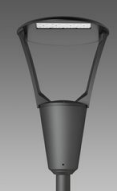
3362 Iseo 3 - centre street



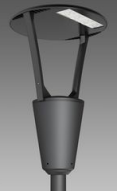
3363 Iseo 4 - cycle lane



3383 Como 1 - roto-symmetric



3384 Como 2 - asymmetric



3385 Como 3 - cycle lane



3386 Como 4 - bi-asymmetric



3350 Garda 1 - roto-symmetric



3351 Garda 2 - asymmetric



3352 Garda 3 - cycle lane



3353 Garda 4 - cycle + street



3355 Garda 5 - roto-symmetric



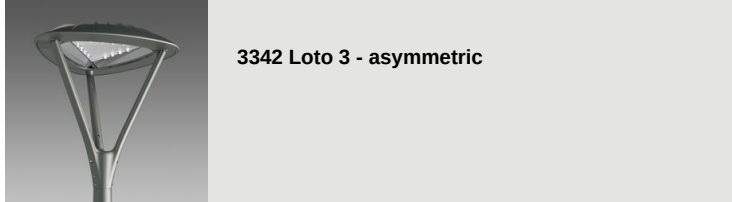
3355 Garda 6 - roto-symmetric



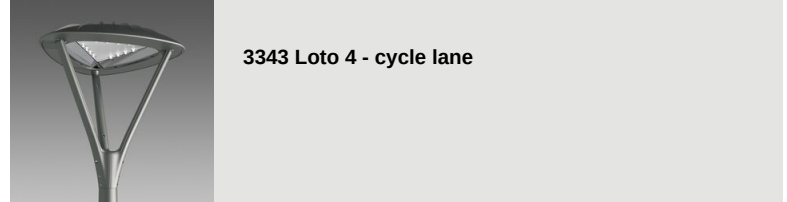
3340 Loto 1 - wide beam transparent



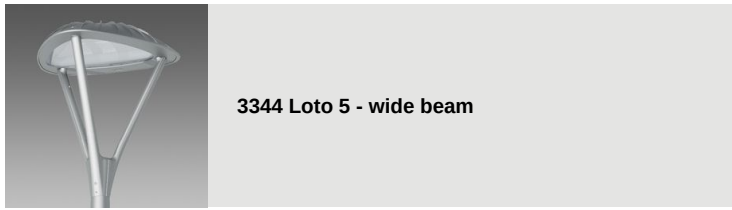
3340 Loto 2 - wide beam matt



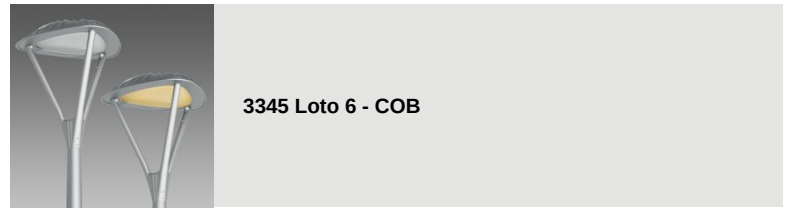
**3342 Loto 3 - asymmetric**



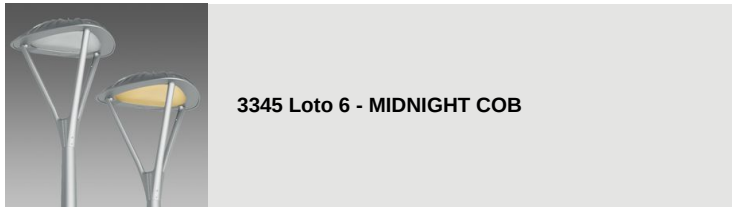
**3343 Loto 4 - cycle lane**



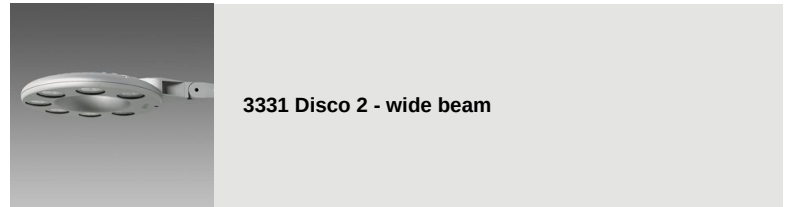
**3344 Loto 5 - wide beam**



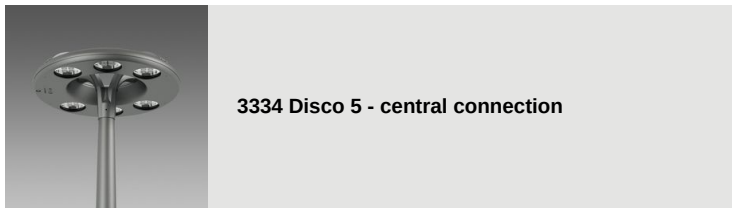
**3345 Loto 6 - COB**



**3345 Loto 6 - MIDNIGHT COB**



**3331 Disco 2 - wide beam**



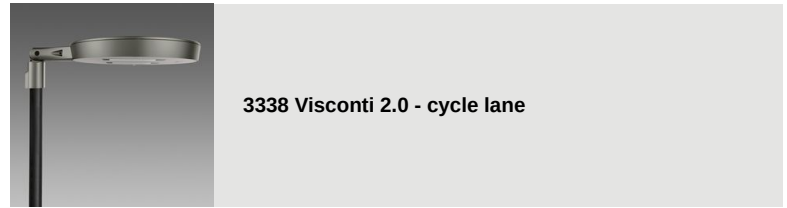
**3334 Disco 5 - central connection**



**3336 Visconti 2.0 - roto-symmetric**



**3337 Visconti 2.0 - street ME**



**3338 Visconti 2.0 - cycle lane**



**3339 Visconti 2.0 - large areas**



**3327 Visconti 2.0 - street ME**



**3328 Visconti 2.0 - street ME**



**3329 Visconti 2.0 - street ME**



**3290 Sella 1 - ST**



**3291 Sella 1 - STWB**



**3292 Sella 1 - asymmetric 45°**



**3293 Sella 1 - asymmetric 60°**



**3294 Sella 1 - cycle lanes**



**3295 Sella 1 - large areas**



**3296 Sella 1 - HP**



**3297 Sella 1 - HP -pedestrian crossings LH**



**3298 Sella 1 - HP -pedestrian crossings RH**



**3390 Sella 2 - ST**



**3391 Sella 2 - STWB**



**3392 Sella 2 - asymmetric 45°**



**3393 Sella 2 - asymmetric 60°**



**3395 Sella 2 - large areas**



**3396 Sella 2 - HP**



**3475 Mini Giovi W1 - street**



**3476 Mini Giovi W2 - street**



**3477 Mini Giovi N1 - cycle lane**



**3478 Mini Giovi M1 - street**




**3479 Mini Giovi T4 - large areas**



**3480 Mini Giovi - high performance - large areas**



**3481 Mini Giovi - high performance - street ME**



3482 Mini Giovi - high performance - cycle lane



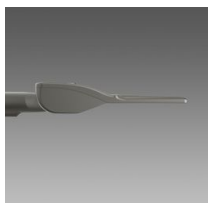
3483 Mini Giovi AMBRA - large areas




3484 Mini Giovi AMBRA - street ME




3485 Mini Giovi AMBER - cycle lane




3486 Mini Giovi left (LH)- pedestrian crossings




3487 Mini Giovi right (RH) - pedestrian crossings




3472 Giovi M1 - street




3473 Giovi W1 - street




3474 Giovi M2 - street




3490 Giovi - high performance - large areas




3491 Giovi - high performance - street ME




3492 Giovi AMBRA T4 - large areas




3493 Giovi AMBER - street ME




3494 Giovi T4 - asymmetric - large areas



3495 Giovi W2 - street



3496 Giovi - left (LH) - pedestrian crossings



3497 Giovi - right (RH) - pedestrian crossings



3269 Mini Stelvio FX T5 - wide beam





**3277 Mini Stelvio FX T2 - street**



**3278 Mini Stelvio FX T3 - wide beam street**



**3279 Mini Stelvio FX T4 - asymmetric**



**3375 Mini Stelvio - high performance - street**



**3376 Mini Stelvio - high performance - large areas**



**3270 Stelvio 1 - Plus - LED**



**3274 Stelvio 2 - Plus - LED asymmetric**



**3370 Stelvio - high performance - street**



**3374 Stelvio - high performance - large areas**



**3280 Rolle - T1**



**3283 Rolle - T4**



**3284 Rolle - T5**



**3285 Rolle - high performance**



**3286 Rolle - high performance**



**Design Illuminazione**  
1518 Clima LED against light pollution



**1570 Clima - LED**

Please contact the Consulting and Design Centre for any technical information. The reported luminous flux is the flux emitted by the light source with a tolerance of  $\pm 10\%$  compared to the indicated value. The total wattage absorbed by the system will not exceed 10% of the reported value. Technical lighting data may be subject to changes and improvements due to the fast evolution of the technology. Wednesday, December 25, 2024