

1508 - Fluted pole ø 120 with base

Code: 426378-00

GENERAL INFORMATION



Article	1508 - Fluted pole ø 120 with base
Code	426378-00

DIMENSIONS AND WEIGHT

Weight (Kg)	26 kg
-------------	-------

INSTALLATION

Diameter (Ø) of pole connector (mm)	60-60 mm
-------------------------------------	----------



1508 Fluted pole ø 120 with base



1508 - Fluted pole ø 120 with base

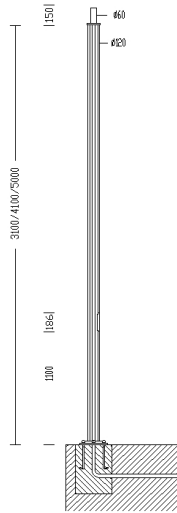
Code: 426378-00



1508 - Fluted pole \varnothing 120 with base

Code: 426378-00

MATERIALS AND COLOURS



Housing	Fluted extruded aluminium, anodised by tin electroplating, 15/20 μ thick. Aluminium inspection window, with 2 x 16A fuses, 4-pole/3-way terminal block = 10 mm ² shunt 2.5 mm ² . Insulation Class II. Requires the purchase of 4 anchor bolts.
Pole connection	60-60
Coating	anodised by tin electroplating, 15/20 μ thick, natural oxidised colour or graphite painted.
Colour	Oxidised

STANDARDS AND COMPLIANCE

Markings and tests	CE
Laboratory Tests	The possibility of coupling a composition to the lamp post is subject to verification of the resistance to wind load, in the areas specified in Standard DM 14/01/2008 and according to the design load specifications in Standard EN 40-3-1.

WARRANTY

After sales warranty	0 yr
----------------------	------

DOWNLOAD

MOUNTS

[AssemblyInstructions 1508-1509.pdf](#)

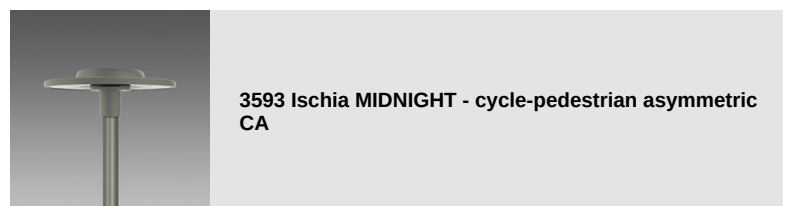
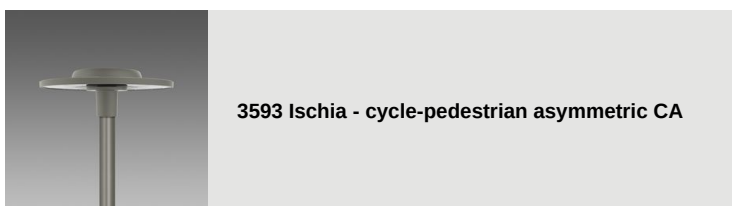
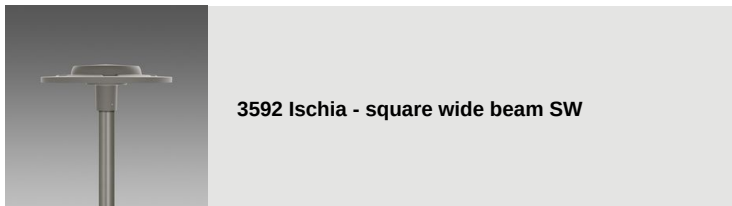
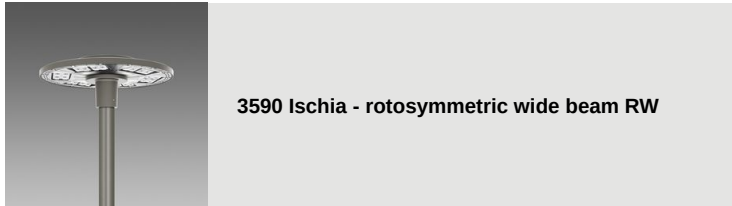
DESIGNS

[TechnicalDrawing 1508.dxf](#)



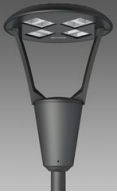
1508 - Fluted pole ø 120 with base

Code: 426378-00

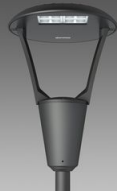


1508 - Fluted pole ø 120 with base

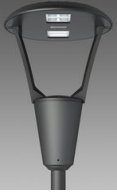
Code: 426378-00



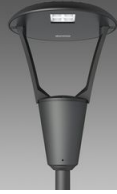
3360 Iseo 1 - roto-symmetric



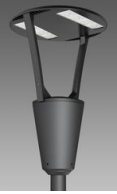
3361 Iseo 2 - street



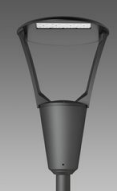
3362 Iseo 3 - centre street



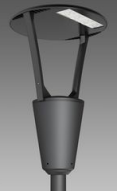
3363 Iseo 4 - cycle lane



3383 Como 1 - roto-symmetric



3384 Como 2 - asymmetric



3385 Como 3 - cycle lane



3386 Como 4 - bi-asymmetric



3350 Garda 1 - roto-symmetric



3351 Garda 2 - asymmetric



3352 Garda 3 - cycle lane



3353 Garda 4 - cycle + street



3355 Garda 5 - roto-symmetric



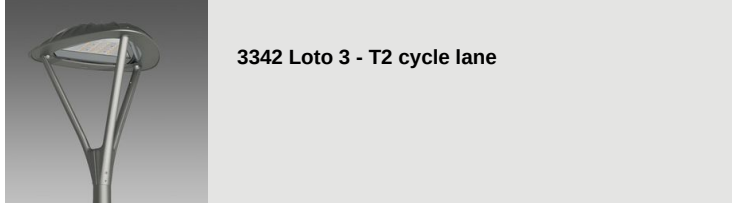
3355 Garda 6 - roto-symmetric



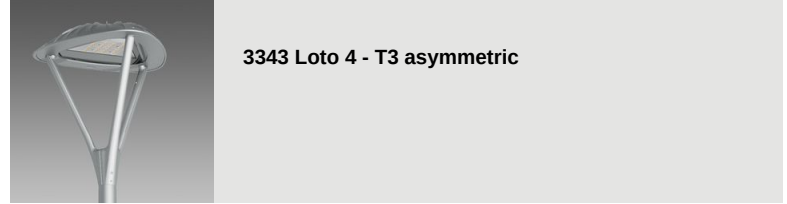
3340 Loto 1 - wide beam transparent



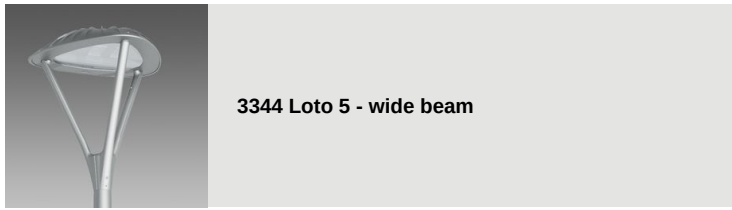
3340 Loto 2 - wide beam matt



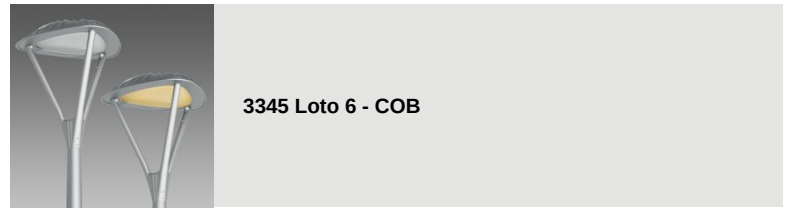
3342 Loto 3 - T2 cycle lane



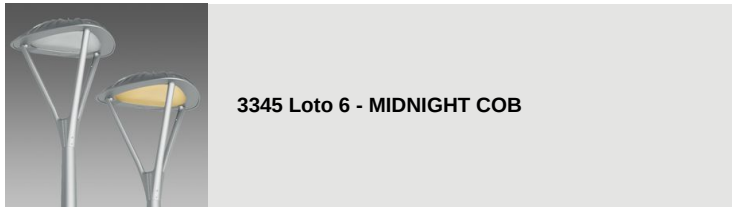
3343 Loto 4 - T3 asymmetric



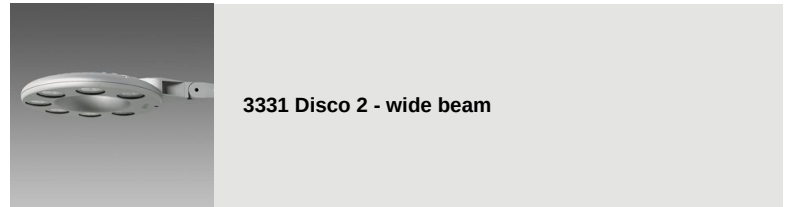
3344 Loto 5 - wide beam



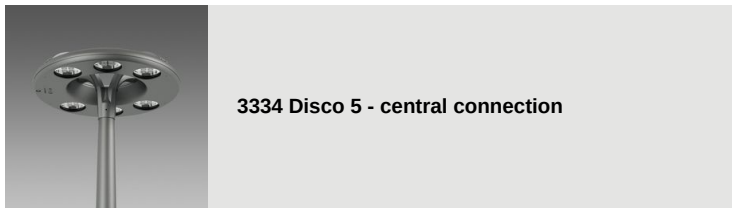
3345 Loto 6 - COB



3345 Loto 6 - MIDNIGHT COB



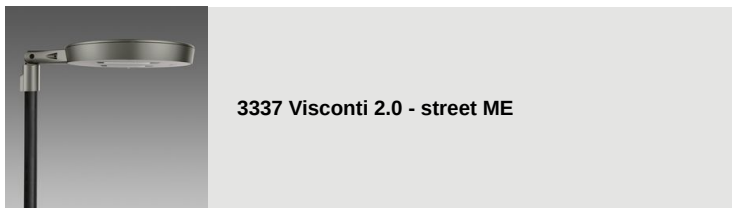
3331 Disco 2 - wide beam



3334 Disco 5 - central connection



3336 Visconti 2.0 - roto-symmetric



3337 Visconti 2.0 - street ME



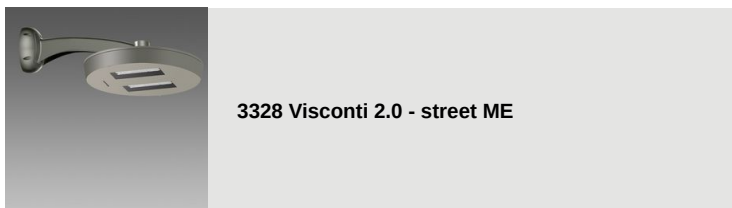
3338 Visconti 2.0 - cycle lane



3339 Visconti 2.0 - large areas



3327 Visconti 2.0 - street ME



3328 Visconti 2.0 - street ME



3329 Visconti 2.0 - street ME



3290 Sella 1 - ST



3291 Sella 1 - STWB



3292 Sella 1 - asymmetric 45°



3293 Sella 1 - asymmetric 60°



3294 Sella 1 - cycle lanes



3295 Sella 1 - large areas



3296 Sella 1 - HP



3297 Sella 1 - HP -pedestrian crossings LH



3298 Sella 1 - HP -pedestrian crossings RH



3390 Sella 2 - ST



3391 Sella 2 - STWB



3392 Sella 2 - asymmetric 45°



3393 Sella 2 - asymmetric 60°



3395 Sella 2 - large areas



3396 Sella 2 - HP



3475 Mini Giovi W1 - street



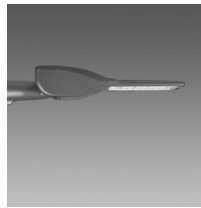
3476 Mini Giovi W2 - street



3477 Mini Giovi N1 - cycle lane



3478 Mini Giovi M1 - street



3479 Mini Giovi T4 - large areas



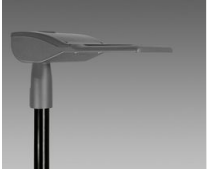
3480 Mini Giovi - high performance - large areas



3481 Mini Giovi - high performance - street ME



3482 Mini Giovi - high performance - cycle lane



3483 Mini Giovi AMBRA - large areas



3484 Mini Giovi AMBRA - street ME



3485 Mini Giovi AMBER - cycle lane



3486 Mini Giovi left (LH)- pedestrian crossings



3487 Mini Giovi right (RH) - pedestrian crossings



3472 Giovi M1 - street



3473 Giovi W1 - street



3474 Giovi M2 - street



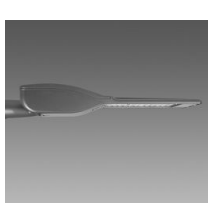
3490 Giovi - high performance - large areas



3491 Giovi - high performance - street ME



3492 Giovi AMBRA T4 - large areas



3493 Giovi AMBER - street ME



3494 Giovi T4 - asymmetric - large areas



3495 Giovi W2 - street



3496 Giovi - left (LH) - pedestrian crossings



3497 Giovi - right (RH) - pedestrian crossings



3275 Mini Stelvio - street



3277 Mini Stelvio FX T2 - street



3278 Mini Stelvio FX T3 - wide beam street



3375 Mini Stelvio - high performance - street



3270 Stelvio 1 - Plus - LED



3274 Stelvio 2 - Plus - LED asymmetric



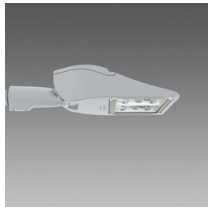
3370 Stelvio - high performance - street



3374 Stelvio - high performance - large areas



3280 Rolle - T1



3283 Rolle - T4



3285 Rolle - high performance



3286 Rolle - high performance



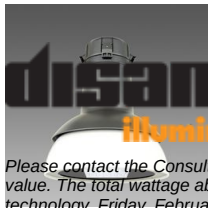
1513 Torcia LED COB



1518 Clima LED against light pollution



1570 Clima - LED



3142 Campana LED



3146 Campana LED

Please contact the Consulting and Design Centre for any technical information. The reported luminous flux is the flux emitted by the light source with a tolerance of $\pm 10\%$ compared to the indicated value. The total wattage absorbed by the system will not exceed 10% of the reported value. Technical lighting data may be subject to changes and improvements due to the fast evolution of the technology. Friday, February 14, 2025