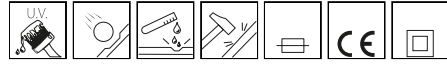


## 1416 - Steel pole ø 159 to be buried

Code: 426752-00

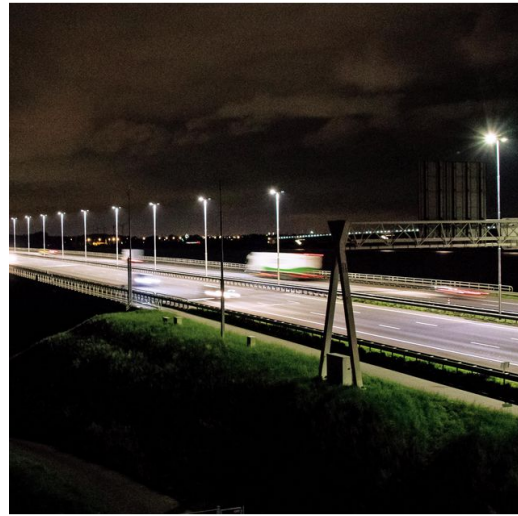
### GENERAL INFORMATION



Article	1416 - Steel pole ø 159 to be buried
Code	426752-00

### DIMENSIONS AND WEIGHT

Weight (Kg)	134.5 kg
-------------	----------



1416 Steel pole ø 159 to be buried



## 1416 - Steel pole ø 159 to be buried

---

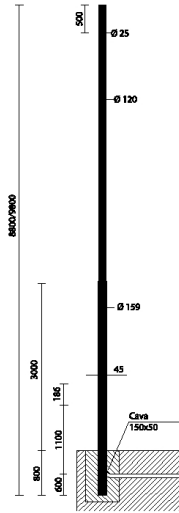
Code: 426752-00



# 1416 - Steel pole $\varnothing$ 159 to be buried

Code: 426752-00

## MATERIALS AND COLOURS



Housing	Hot-rolled steel, $\varnothing$ 60 mast-top connection. With 2 x 16A fuses, removable 4-pole/3-way terminal block = 10mm <sup>2</sup> and 2.5 mm <sup>2</sup> shunt. Supplied as standard with Insulation Class II.
Pole connection	60mm
Coating	thermoset polyester powder coated.
Colour	Grey

## STANDARDS AND COMPLIANCE

Markings and tests	CE
Laboratory Tests	The possibility of coupling a composition to the lamp post is subject to verification of the resistance to wind load, in the areas specified in Standard DM 14/01/2008 and according to the design load specifications in Standard EN 40-3-1.

## WARRANTY

After sales warranty	0 yr
----------------------	------

## DOWNLOAD

### MOUNTS

[AssemblyInstructions 1415-1416 01-17.pdf](#)

### DESIGNS

[TechnicalDrawing 1416.dxf](#)

