

1417 - Steel pole with base ø 102-159

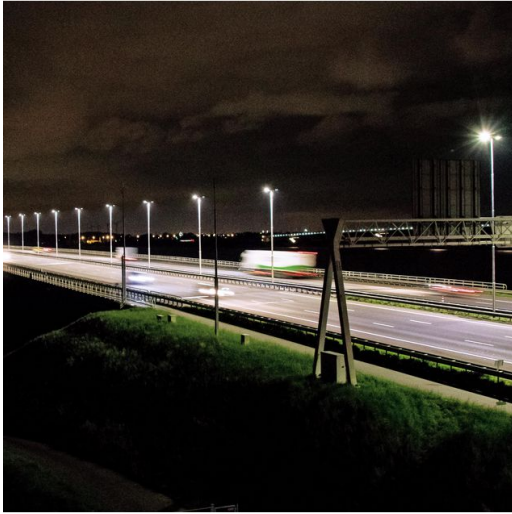
Code: 426763-00

GENERAL INFORMATION

Article	1417 - Steel pole with base ø 102-159
Code	426763-00

DIMENSIONS AND WEIGHT

Weight (Kg)	39 kg
-------------	-------



1417 Palo in acciaio con base ø 102-159



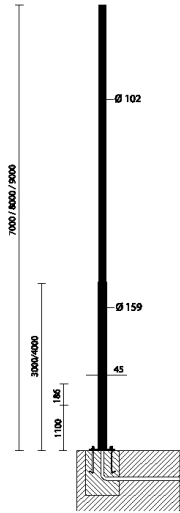
1417 - Steel pole with base ø 102-159

Code: 426763-00



1417 - Steel pole with base ø 102-159

Code: 426763-00



DOWNLOAD

MOUNTS

[AssemblyInstructions 1417-1418 04-14.pdf](#)

DESIGNS

[TechnicalDrawing 1417.dxf](#)

[TechnicalDrawing3D disano 1417 pole 9m.3dm](#)



MATERIALS AND COLOURS

Housing	Hot-rolled steel, ø60 mast-top connection. Version with the base requires the purchase of 4 anchor bolts to be buried. With 2 x 16A fuses, removable 4-pole/3-way terminal block = 10mm ² and 2.5 mm ² shunt. Standard with Insulation Class II.
Pole connection	0
Coating	thermoset polyester powder coated.
Colour	Graphite

STANDARDS AND COMPLIANCE

Markings and tests	CE
Laboratory Tests	The possibility of coupling a composition to the lamp post is subject to verification of the resistance to wind load, in the areas specified in Standard DM 14/01/2008 and according to the design load specifications in Standard EN 40-3-1.

WARRANTY

After sales warranty	0 yr
----------------------	------