

## 211 - Sector connector

Code: 426952-00

### GENERAL INFORMATION



Article	211 - Sector connector
Code	426952-00

### DIMENSIONS AND WEIGHT

Height (mm)	190 mm
Diameter (Ø) (mm)	214 mm
Weight (Kg)	3.9 kg



in die-cast aluminium, to be used on Ø 120 pole with acc. 210.



## 211 - Sector connector

---

Code: 426952-00



## 211 - Sector connector

Code: 426952-00

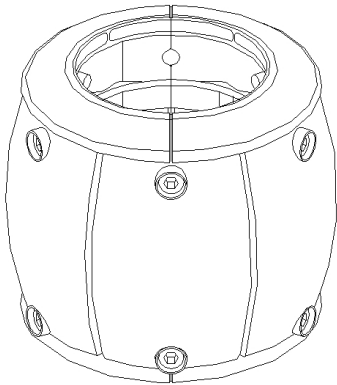
### MATERIALS AND COLOURS

Housing	in die-cast aluminium, to be used on Ø 120 pole with acc. 210.
Pole connection	//
Colour	Grey9007

### WARRANTY

After sales warranty	0 yr
----------------------	------

Ø214



190

### DOWNLOAD

#### MOUNTS

[AssemblyInstructions acc 210-211.pdf](#)

#### DESIGNS

[TechnicalDrawing acc 211.dxf](#)

[TechnicalDrawing3D disano 211.3ds](#)



## 211 - Sector connector

Code: 426952-00



**1756 Monza FX**



**1756 Monza HP - high performance**



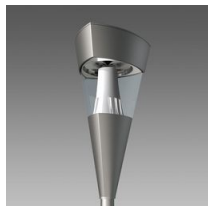
**3142 Campana LED**



**3143 Campana LED**



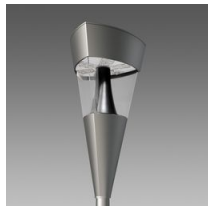
**3146 Campana LED**



**1513 Torcia LED COB**



**1707 Torcia LED**



**1708 Torcia LED**