

## 1873 - Portofino - wall

Code: 511160-39

### GENERAL INFORMATION



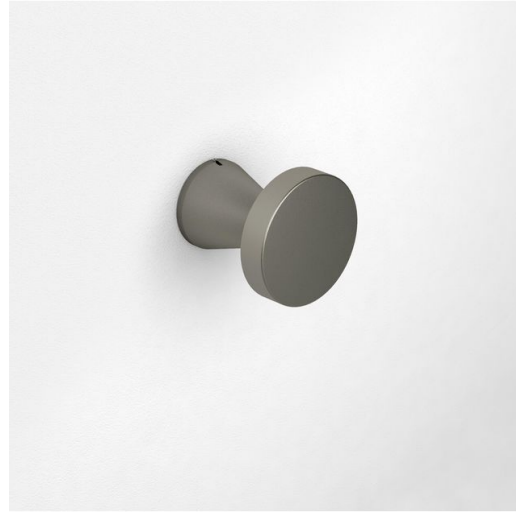
Article	1873 - Portofino - wall
Code	511160-39

### DIMENSIONS AND WEIGHT

Height (mm)	150 mm
Diameter (Ø) (mm)	140 mm
Weight (Kg)	0.8 kg

### ELECTRICAL CHARACTERISTICS AND CONTROLS

Voltage type	AC
Min Voltage (V)	220 V
Max Voltage (V)	240 V
Min Frequency (Hz)	50 Hz
Max Frequency (Hz)	60 Hz
Frequency (Hz)	50 Hz
Wiring name	CLD
Power factor	≥0.9
Insulation class	Class I
Controllability	None



#### Portofino: pleasant aesthetics with maximum functionality

A touch of prestige for any residential setting, with the most energy-efficient lighting technologies. Portofino is a bollard for driveways, parks and pedestrian walkways. Produced in different wall-mounted versions, heights (150, 300 and 600 cm) and diameters, it also features a version with a flat diffuser and 3 versions with a domed diffuser, this bollard is the right solution for any lighting project.

The latest generation of high-efficiency LED sources, with a colour temperature of 4000K and a high colour rendering index, ensure a long lifespan.

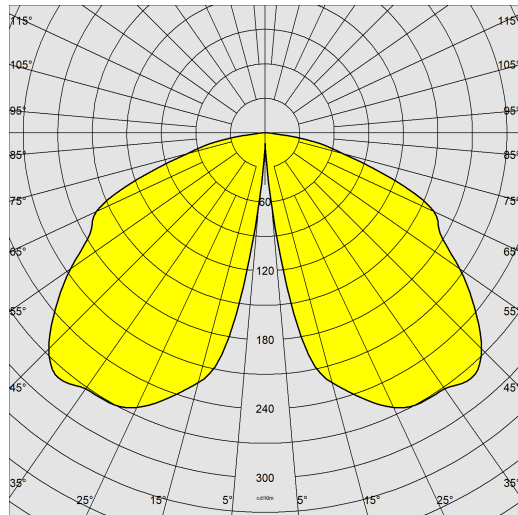
Portofino also stands out for the high quality materials, with a die-cast aluminum body and column with cooling fins, IP65 protection rating, and a shatterproof and self-extinguishing polycarbonate diffuser. It comes with a connector for connection to the power line and the base plate for wall installation.



## 1873 - Portofino - wall

Code: 511160-39

### PHOTOMETRIC DATA



Lighting source	LED
CRI	>80
Luminous flux (output) (lm)	745 lm
Power absorption (total) (W)	10 W
CCT	3000 K
Luminous efficacy (lm/W)	75 lm/W
LED flux maintenance	50000 hr, L 70, B 50

### MECHANICAL CHARACTERISTICS

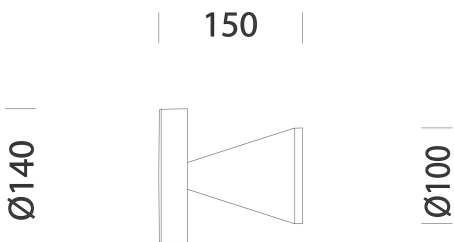
Impact resistance rating (IK)	IK08
IP	65



# 1873 - Portofino - wall

Code: 511160-39

## MATERIALS AND COLOURS



Housing	in die-cast aluminium. Column in extruded aluminium.
Diffuser	in polycarbonate, transparent, anti-glare, shatterproof and V2 self-extinguishing, UV stabilised.
Coating	pre-treatment of metal surface, polyester powder coating to ensure resistance to corrosion and salt spray fogs, UV stabilised.
Special coating (UPON REQUEST)	Upon request: protective coating recommended for marine environments within 5 km (3 miles) of the sea.
Colour	Graphite
Equipment	<ul style="list-style-type: none"> <li>- with air circulation valve.</li> <li>- complete with waterproof connector for line connection.</li> <li>- wall mounting plate.</li> </ul>

## STANDARDS AND COMPLIANCE

Photobiological safety class	RG0
Markings and tests	CE
Reference standards	EN60598-1. With degree of protection according to EN60529.
Energy Label	F

## DOWNLOAD

### MOUNTS

[AssemblyInstructions portofino 09-21.pdf](#)

### DESIGNS

[BIM 1873 Portofino - 11 2024.zip](#)

[TechnicalDrawing 1873n.dxf](#)



## WARRANTY

After sales warranty	3 yr
----------------------	------