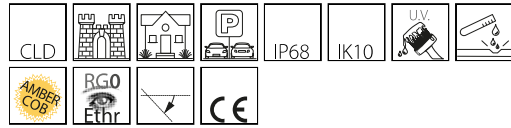


1688 - Floor - adjustable - FL

Code: 530437-73

GENERAL INFORMATION



Article	1688 - Floor - adjustable - FL
Code	530437-73

DIMENSIONS AND WEIGHT

Height (mm)	200 mm
Diameter (Ø) (mm)	245 mm
Weight (Kg)	4.1 kg

ELECTRICAL CHARACTERISTICS AND CONTROLS

Voltage type	AC
Min Voltage (V)	220 V
Max Voltage (V)	240 V
Min Frequency (Hz)	50 Hz
Max Frequency (Hz)	60 Hz
Frequency (Hz)	50 Hz
Wiring name	CLD
Power factor	≥0.95
Insulation class	Class I
Controllability	None



Gamma Floor, one further step towards a more technical lighting of surfaces.

Accent lighting emphasises details and adds a third dimension to objects.

Both classic and modern styles produce the same effect.

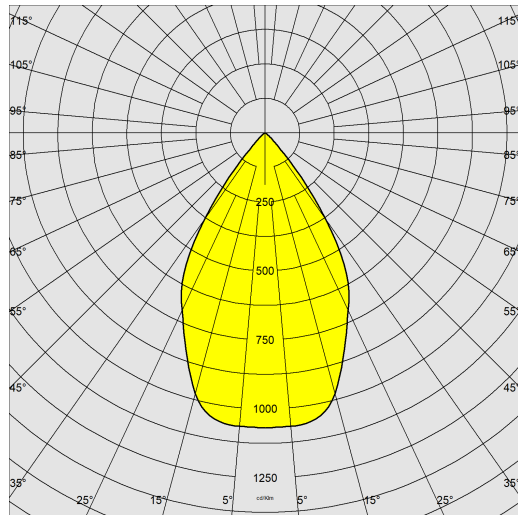
It comes with new optics, more beam angles, +/- 20° adjustable reflectors, low installation thickness and new lighting accessories



1688 - Floor - adjustable - FL

Code: 530437-73

PHOTOMETRIC DATA



Lighting source	LED COB AMBER
CRI	amber
Luminous flux (output) (lm)	2272 lm
Power absorption (total) (W)	26 W
CCT	2200 K
Luminous efficacy (lm/W)	87 lm/W
Beam angle	60 °
LED flux maintenance	50000 hr, L 90, B 10

MECHANICAL CHARACTERISTICS

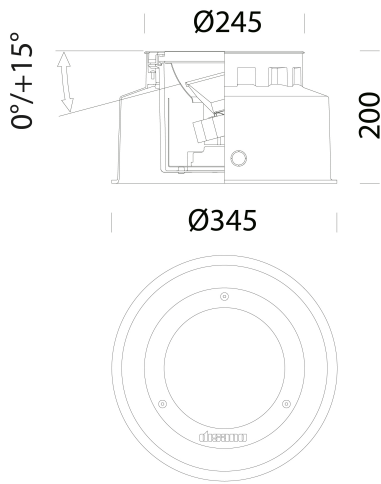
Impact resistance rating (IK)	IK10
Max load	4000 kg
Walkover	True
Driveover	True
IP	68



1688 - Floor - adjustable - FL

Code: 530437-73

MATERIALS AND COLOURS



Housing	in die-cast aluminium with outer shell in fibreglass nylon, frame in AISI 316L stainless steel.
Optics	in high-performance metallised polycarbonate. Adjustable with graduated brackets max. 0/+15°.
Diffuser	tempered glass, 15 mm thick, resistant to thermal shock, impact and static loads.
Coating	the fully automated powder-coating cycle involves a polyester-based, salt-spray corrosion-resistant and UV-stabilised paint.
Colour	Stainless steel
Equipment	<ul style="list-style-type: none"> - standard with flush-mounted boxes. - silicone rubber sealing gasket. - in fibreglass nylon cable gland diam. 1/2 inch gas. - anti-seize bolts
driveway lamp. Keep clear. Luminous flux maintenance 70%: 100.000h (L70B50) o luminous flux maintenance 90%: 50.000h (L90B10).	

STANDARDS AND COMPLIANCE

DOWNLOAD

MOUNTS

[AssemblyInstructions floor 10-23.pdf](#)

DESIGNS

[TechnicalDrawing 1687.dxf](#)



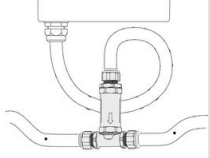
Photobiological safety class	RG0 Ethr
Markings and tests	CE
Reference standards	EN60598-1. They have a degree of protection according to the EN60529 standard.
Laboratory Tests	the luminaire passed the static load resistance test (EN 60598-2-13) with an applied weight of 4000 kg.
Energy Label	E

WARRANTY

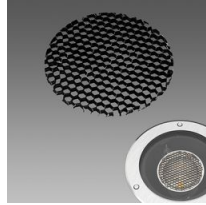
After sales warranty	3 yr
----------------------	------

1688 - Floor - adjustable - FL

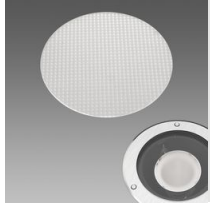
Code: 530437-73



399 Connector for continuous light line



541 Alveolar screen - Floor



542 Prismatic slab - Floor



543 Frosted slab - Floor



544 Dome-shaped - Floor



545 Transparent slab - Floor