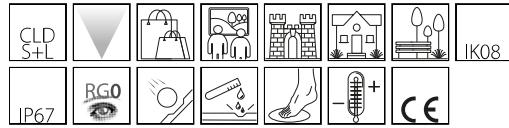


1650 - Microfloor LED

Code: 530810-00

GENERAL INFORMATION



Article	1650 - Microfloor LED
Code	530810-00

DIMENSIONS AND WEIGHT

Height (mm)	86 mm
Diameter (Ø) (mm)	120 mm
Weight (Kg)	0.4 kg

ELECTRICAL CHARACTERISTICS AND CONTROLS

Voltage type	DC
Min Voltage (V)	24 V
Max Voltage (V)	24 V
Frequency (Hz)	0 Hz
Wiring name	CLD-S+L
Power factor	≥0.95
Insulation class	Class III
Controllability	None



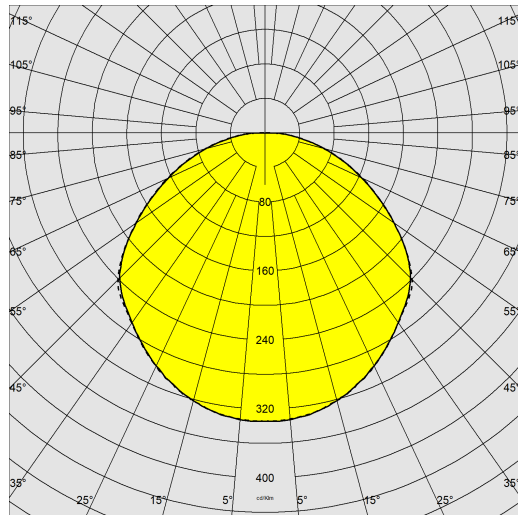
1650 Microfloor LED



1650 - Microfloor LED

Code: 530810-00

PHOTOMETRIC DATA



Lighting source	LED
CRI	80
Luminous flux (output) (lm)	46 lm
Power absorption (total) (W)	0.6 W
CCT	4000 K
Luminous efficacy (lm/W)	77 lm/W
LED flux maintenance	50000 hr, L 70, B 50

MECHANICAL CHARACTERISTICS

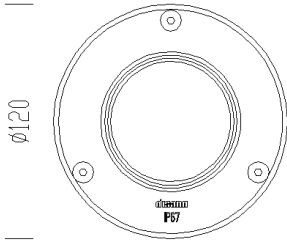
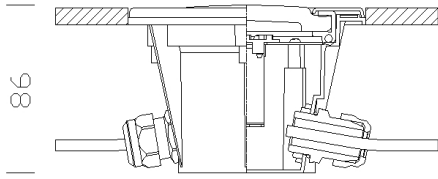
Impact resistance rating (IK)	IK08
Max load	2000 kg
Walkover	True
Driveover	True
IP	67



1650 - Microfloor LED

Code: 530810-00

MATERIALS AND COLOURS



Housing	in fibreglass nylon, frame in AISI 316 stainless steel.
Diffuser	tempered glass, resistant to thermal shock and impact (UNI EN 12150-1:2001).
Colour	Stainless steel
Equipment	silicone and EPDM rubber sealing gasket.
	driveway lamp. Keep clear.

STANDARDS AND COMPLIANCE

Photobiological safety class	RG0
Markings and tests	CE
Reference standards	EN60598-1. They have a degree of protection according to the EN60529 standard.
Energy Label	E

DOWNLOAD

WARRANTY

MOUNTS

[AssemblyInstructions microfloor 10-22.pdf](#)

DESIGNS

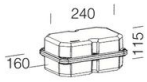
[TechnicalDrawing 1650 microfloor.dxf](#)

After sales warranty	3 yr
----------------------	------

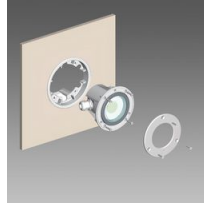


1650 - Microfloor LED

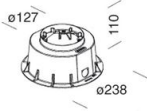
Code: 530810-00



179 IP677 CC wiring



314 Wall frame



313 Outer shell