

504 - Single arm

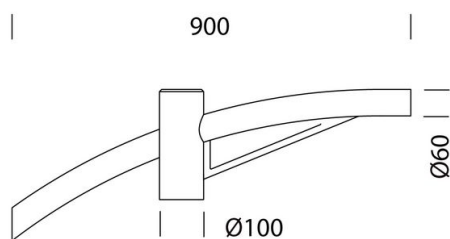
Code: 991263-00

GENERAL INFORMATION

| | |
|---------|------------------|
| Article | 504 - Single arm |
| Code | 991263-00 |

DIMENSIONS AND WEIGHT

| | |
|-------------|--------|
| Length (mm) | 900 mm |
| Width (mm) | 100 mm |
| Weight (Kg) | 9.1 kg |



504 Braccio singolo



504 - Single arm

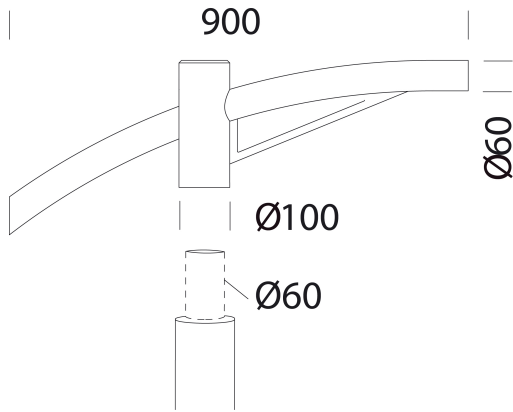
Code: 991263-00



504 - Single arm

Code: 991263-00

MATERIALS AND COLOURS



| | |
|-----------------|---|
| Housing | in steel, suitable for installation on poles with Ø60 connection. |
| Pole connection | 60mm |
| Colour | Graphite |

WARRANTY

| | |
|----------------------|------|
| After sales warranty | 0 yr |
|----------------------|------|

DOWNLOAD

DESIGNS

TechnicalDrawing 504k.dxf



504 - Single arm

Code: 991263-00



3472 Giovi M1 - street



3269 Mini Stelvio FX T5 - wide beam



3278 Mini Stelvio FX T3 - wide beam street



3376 Mini Stelvio - high performance - large areas



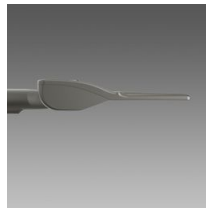
3285 Rolle - high performance



3286 Rolle - high performance



3476 Mini Giovi W2 - street



3477 Mini Giovi N1 - cycle lane



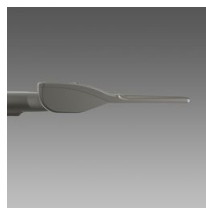
3478 Mini Giovi M1 - street



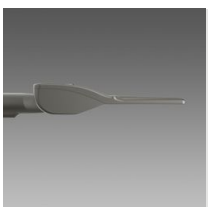
3479 Mini Giovi T4 - large areas



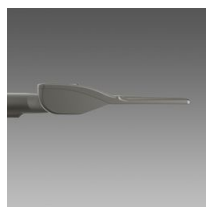
3480 Mini Giovi - high performance - large areas



3481 Mini Giovi - high performance - street ME



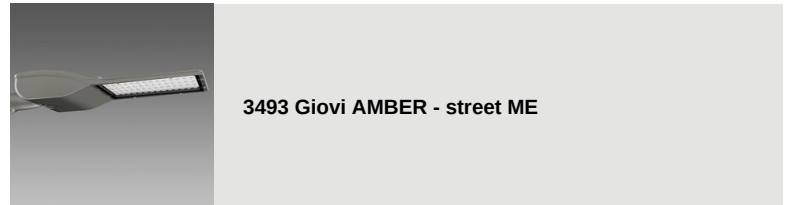
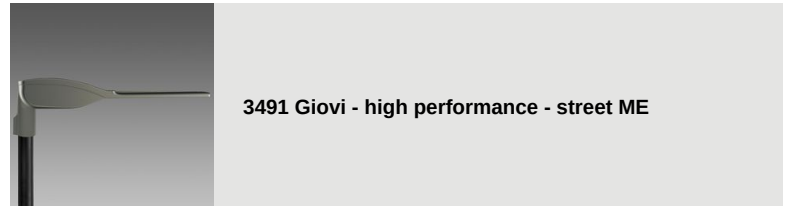
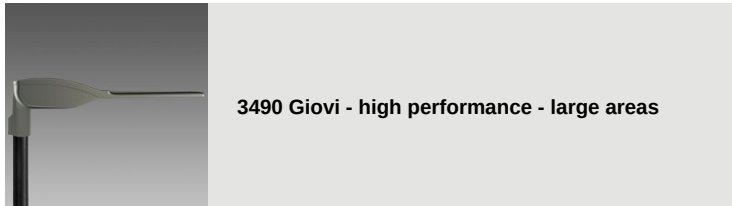
3482 Mini Giovi - high performance - cycle lane



3483 Mini Giovi AMBRA - large areas

504 - Single arm

Code: 991263-00

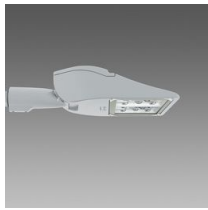




3375 Mini Stelvio - high performance - street



3280 Rolle - T1



3283 Rolle - T4



3284 Rolle - T5



3290 Sella 1 - ST



3291 Sella 1 - STWB



3292 Sella 1 - asymmetric 45°



3293 Sella 1 - asymmetric 60°



3294 Sella 1 - cycle lanes



3295 Sella 1 - large areas



3296 Sella 1 - HP



3297 Sella 1 - HP -pedestrian crossings LH



3298 Sella 1 - HP -pedestrian crossings RH



3390 Sella 2 - ST



3391 Sella 2 - STWB



3392 Sella 2 - asymmetric 45°



3393 Sella 2 - asymmetric 60°



3395 Sella 2 - large areas



3396 Sella 2 - HP



3270 Stelvio 1 - Plus - LED



3274 Stelvio 2 - Plus - LED asymmetric



3370 Stelvio - high performance - street



3374 Stelvio - high performance - large areas



3475 Mini Giovi W1 - street



3275 Mini Stelvio - street



3276 Mini Stelvio - asymmetric



3281 Rolle - T2



3282 Rolle - T3



Please contact the Consulting and Design Centre for any technical information. The reported luminous flux is the flux emitted by the light source with a tolerance of $\pm 10\%$ compared to the indicated value. The total wattage absorbed by the system will not exceed 10% of the reported value. Technical lighting data may be subject to changes and improvements due to the fast evolution of the technology. Thursday, July 4, 2024