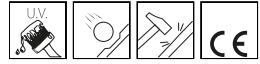


5 - Fibreglass pole

Code: 991905-00

GENERAL INFORMATION



Article	5 - Fibreglass pole
Code	991905-00

DIMENSIONS AND WEIGHT

Weight (Kg)	1.6 kg
-------------	--------

INSTALLATION

Diameter (Ø) of pole connector (mm)	60-60 mm
-------------------------------------	----------



Fibreglass poles have a round or cone-shaped cross-section (dimensions depend on mechanical requirements). Compared with aluminium or steel poles they offer the following advantages:

- lighter weight
- less maintenance
- surfaces are not attacked by corrosive agents
- electrically insulated
- less dangerous when impact occurs
- extremely flexible in the wind.

Certificated poles: These poles are recommended for small-size luminaires (decorative factor), in private areas, (anti-vandalism factor). They can be installed both on a base or buried according to measurements.



5 - Fibreglass pole

Code: 991905-00



5 - Fibreglass pole

Code: 991905-00

MATERIALS AND COLOURS

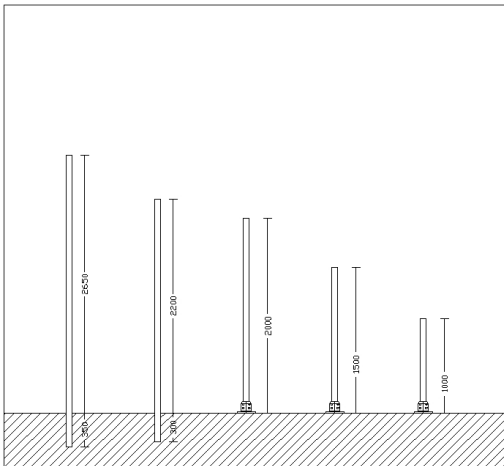
Housing	fibreglass conical pole, corrosion-proof, with high mechanical strength and UV-stabilised
Pole connection	60mm
Colour	Black

STANDARDS AND COMPLIANCE

Markings and tests	CE
--------------------	----

WARRANTY

After sales warranty	0 yr
----------------------	------



DOWNLOAD

DESIGNS

TechnicalDrawing 5.dxf

TechnicalDrawing3D disano 5 pole 2m.3ds



5 - Fibreglass pole

Code: 991905-00



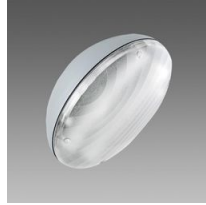
1777 Musa LED cycle-pedestrian



1779 Musa LED



1275 Green



1280 Garden



3340 Loto 2 - wide beam matt



1518 Clima LED against light pollution



1570 Clima - LED



3590 Ischia - rotosymmetric wide beam RW



3590 Ischia MIDNIGHT - rotosymmetric wide beam RW



3591 Ischia - COB rotosymmetric wide beam RM



3591 Ischia MIDNIGHT - COB rotosymmetric wide beam RM



3592 Ischia - square wide beam SW



3592 Ischia MIDNIGHT - square wide beam SW



3596 Ischia MIDNIGHT - asymmetric wide beam AW

5 - Fibreglass pole

Code: 991905-00



3594 Ischia - cycle-pedestrian asymmetric CS



3594 Ischia MIDNIGHT - cycle pedestrian symmetric CS



3595 Ischia MIDNIGHT - asymmetric medium beam AM



3593 Ischia - cycle-pedestrian asymmetric CA



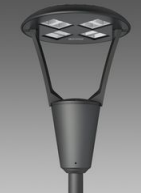
3593 Ischia MIDNIGHT - cycle-pedestrian asymmetric CA



3596 Ischia - asymmetric wide beam AW



3595 Ischia - asymmetric medium beam AM



3360 Iseo 1 - roto-symmetric



3361 Iseo 2 - street



3362 Iseo 3 - centre street



3363 Iseo 4 - cycle lane



3383 Como 1 - roto-symmetric



3384 Como 2 - asymmetric



3385 Como 3 - cycle lane



3386 Como 4 - bi-asymmetric



3350 Garda 1 - roto-symmetric



3351 Garda 2 - asymmetric



3352 Garda 3 - cycle lane



3353 Garda 4 - cycle + street



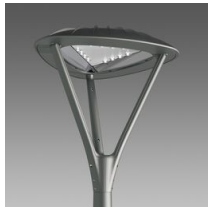
3355 Garda 5 - roto-symmetric



3355 Garda 6 - roto-symmetric



3340 Loto 1 - wide beam transparent



3342 Loto 3 - asymmetric



3343 Loto 4 - cycle lane



3344 Loto 5 - wide beam



3345 Loto 6 - COB



3345 Loto 6 - MIDNIGHT COB



3336 Visconti 2.0 - roto-symmetric



3337 Visconti 2.0 - street ME



3338 Visconti 2.0 - cycle lane



3339 Visconti 2.0 - large areas



1774 Amalfi



1335 Globo LED against light pollution



1260 Vega LED



1260 Vega - Radar Sensor - 230V



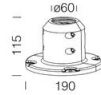
1205 Polar



1264 Vega LED



1260 Vega LED - SA 14



50 Base for acc.5

Please contact the Consulting and Design Centre for any technical information. The reported luminous flux is the flux emitted by the light source with a tolerance of $\pm 10\%$ compared to the indicated value. The total wattage absorbed by the system will not exceed 10% of the reported value. Technical lighting data may be subject to changes and improvements due to the fast evolution of the technology. Wednesday, December 25, 2024