

## 5 - Fibreglass pole

Code: 991906-00

### GENERAL INFORMATION



Article	5 - Fibreglass pole
Code	991906-00

### DIMENSIONS AND WEIGHT

Weight (Kg)	2 kg
-------------	------



5 Palo in vetroresina



## 5 - Fibreglass pole

---

Code: 991906-00



## 5 - Fibreglass pole

Code: 991906-00

### MATERIALS AND COLOURS

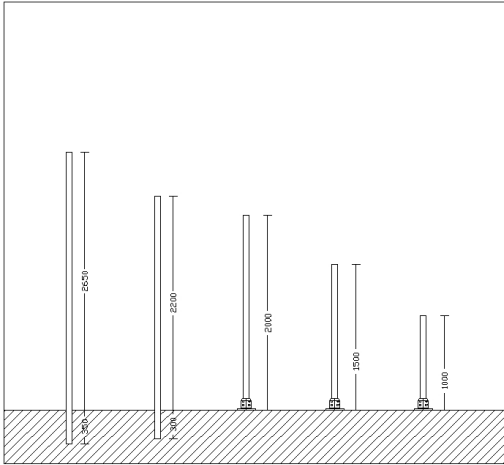
Housing	fibreglass conical pole, corrosion-proof, with high mechanical strength and UV-stabilised
Pole connection	0
Colour	Black

### STANDARDS AND COMPLIANCE

Markings and tests	CE
--------------------	----

### WARRANTY

After sales warranty	0 yr
----------------------	------



### DOWNLOAD

#### DESIGNS

TechnicalDrawing 5.dxf

TechnicalDrawing3D disano 5 pole 2m.3ds



## 5 - Fibreglass pole

Code: 991906-00



**1777 Musa LED cycle-pedestrian**



**1779 Musa LED**



**1275 Green**



**1280 Garden**



**3340 Loto 2 - wide beam matt**



**1518 Clima LED against light pollution**



**1570 Clima - LED**



**3590 Ischia - rotosymmetric wide beam RW**



**3590 Ischia MIDNIGHT - rotosymmetric wide beam RW**



**3591 Ischia - COB rotosymmetric wide beam RM**



**3591 Ischia MIDNIGHT - COB rotosymmetric wide beam RM**



**3592 Ischia - square wide beam SW**



**3592 Ischia MIDNIGHT - square wide beam SW**



**3596 Ischia MIDNIGHT - asymmetric wide beam AW**

## 5 - Fibreglass pole

Code: 991906-00



**3594 Ischia - cycle-pedestrian asymmetric CS**



**3594 Ischia MIDNIGHT - cycle pedestrian symmetric CS**



**3595 Ischia MIDNIGHT - asymmetric medium beam AM**



**3593 Ischia - cycle-pedestrian asymmetric CA**



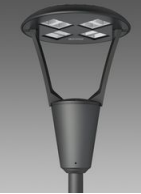
**3593 Ischia MIDNIGHT - cycle-pedestrian asymmetric CA**



**3596 Ischia - asymmetric wide beam AW**



**3595 Ischia - asymmetric medium beam AM**



**3360 Iseo 1 - roto-symmetric**



**3361 Iseo 2 - street**



**3362 Iseo 3 - centre street**



**3363 Iseo 4 - cycle lane**



**3383 Como 1 - roto-symmetric**



**3384 Como 2 - asymmetric**



**3385 Como 3 - cycle lane**



**3386 Como 4 - bi-asymmetric**



**3350 Garda 1 - roto-symmetric**



**3351 Garda 2 - asymmetric**



**3352 Garda 3 - cycle lane**



**3353 Garda 4 - cycle + street**



**3355 Garda 5 - roto-symmetric**



**3355 Garda 6 - roto-symmetric**



**3340 Loto 1 - wide beam transparent**



**3342 Loto 3 - asymmetric**



**3343 Loto 4 - cycle lane**



**3344 Loto 5 - wide beam**



**3345 Loto 6 - COB**



**3345 Loto 6 - MIDNIGHT COB**



**3336 Visconti 2.0 - roto-symmetric**



**3337 Visconti 2.0 - street ME**



**3338 Visconti 2.0 - cycle lane**



**3339 Visconti 2.0 - large areas**



**1774 Amalfi**



**1335 Globo LED against light pollution**



**1260 Vega LED**



**1260 Vega - Radar Sensor - 230V**



**1205 Polar**



**1260 Vega LED - SA 14**

*Please contact the Consulting and Design Centre for any technical information. The reported luminous flux is the flux emitted by the light source with a tolerance of  $\pm 10\%$  compared to the indicated value. The total wattage absorbed by the system will not exceed 10% of the reported value. Technical lighting data may be subject to changes and improvements due to the fast evolution of the technology. Saturday, July 20, 2024*