

6621 - Electrified joint

Code: 994033-46001135

GENERAL INFORMATION

Article	6621 - Electrified joint
Code	994033-46001135

DIMENSIONS AND WEIGHT

Weight (Kg)	0.06 kg
-------------	---------



in polycarbonate. To be used as a linear L, X and descent joint to electrically connect 2 or 3 tracks art. 6001. Use witch acc. 6010/6015/6025/6070.
994032-00 5 poles
994033-00 7 poles
994033-46001135 11 poles



6621 - Electrified joint

Code: 994033-46001135



6621 - Electrified joint

Code: 994033-46001135

MATERIALS AND COLOURS

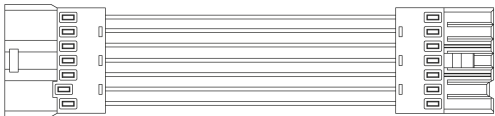
Housing

in polycarbonate. To be used as a linear L, X and descent joint to electrically connect 2 or 3 tracks art. 6001. Use witch acc. 6010/6015/6025/6070.
994032-00 5 poles
994033-00 7 poles
994033-46001135 11 poles

WARRANTY

After sales warranty

0 yr



DOWNLOAD

DESIGNS

TechnicalDrawing 6621.dxf




6621 - Electrified joint

Code: 994033-46001135



6606 Techno System HE - UGR - CRI 80



6611 Techno System HE - symmetric 90° - CRI 80



6612 Techno System HE - asymmetric 25° - CRI 80




6613 Techno System HE - bi-asymmetric 25° - CRI 80




6614 Techno System HE - elliptical 30°x80° - CRI 80



6615 Techno System HE - wide beam 60° - CRI 80



6616 Techno System HE - semi-spherical diffuser wide beam - CRI 80



6601 Techno System - asymmetric 25° - CRI 90




6602 Techno System - bi-asymmetric 25° - CRI 90



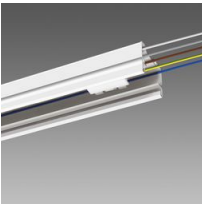
6603 Techno System - elliptical 30°x80° - CRI 90



6604 Techno System - wide beam 60° - CRI 90



6605 Techno System - semi-spherical diffuser wide beam - CRI 90



6001 Power track - for continuous line