

1478 - Palo Urban da interrare

Codice: 425370-00

INFORMAZIONI GENERALI



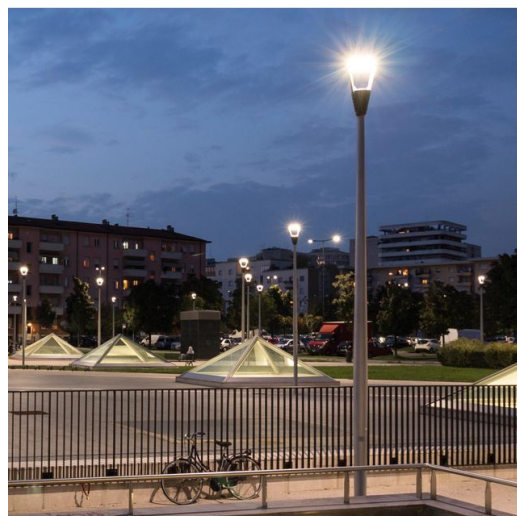
Articolo	1478 - Palo Urban da interrare
Codice	425370-00

DIMENSIONI E PESO

Peso (Kg)	50 kg
-----------	-------

INSTALLAZIONE

Diametro (Ø) attacco palo (mm)	60-60 mm
--------------------------------	----------



1478 Palo Urban da interrare



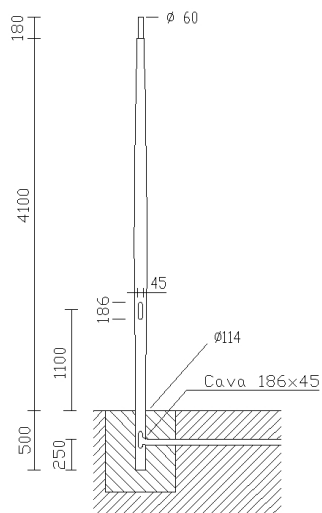
1478 - Palo Urban da interrare

Codice: 425370-00



1478 - Palo Urban da interrare

Codice: 425370-00



DOWNLOAD

MONTAGGI

IstruzioniMontaggio 1440-1441-1477-1478 10-13.pdf

DISEGNI

DisegnoTecnico 1478.dxf

DisegnoTecnico3D disano 1478 urban 6m.3ds



MATERIALI E COLORI

Corpo	In acciaio di sezione semicilindrica. completa di 2 fusibili da 16A, morsettiera asportabile. Predisposto con foro per ingresso cavo di alimentazione, con attacco testa palo ø60.
Attacco palo	60 mm
Verniciatura	verniciato in polvere di poliestirene termoindurente.
Colore	Grey

NORME E CONFORMITÀ

Marcature e test	CE
Test di laboratorio	La possibilità di accoppiare una composizione al palo è subordinata alla verifica della resistenza alla spinta del vento, nelle zone del territorio previsto dalla norma dal DM14/01/2008. Secondo le ipotesi di carico previsto dalle norme EN 40-3-1.

GARANZIA

Garanzia post-vendita	0 yr
-----------------------	------

1478 - Palo Urban da interrare

Codice: 425370-00



3475 Mini Giovi W1 - stradale



3275 Mini Stelvio - stradale



3276 Mini Stelvio - asimmetrico



3590 Ischia - rotosimmetrico fascio largo RW



3590 Ischia MIDNIGHT - rotosimmetrico fascio largo RW



3591 Ischia - COB rotosimmetrico fascio medio RM



3591 Ischia MIDNIGHT - COB rotosimmetrico fascio medio RM



3592 Ischia - quadrato fascio largo SW



3592 Ischia MIDNIGHT - quadrato fascio largo SW



3596 Ischia MIDNIGHT - asimmetrico fascio largo AW



3594 Ischia - ciclopedonale simmetrico CS



3594 Ischia MIDNIGHT - ciclopedonale simmetrico CS



3595 Ischia MIDNIGHT - asimmetrico fascio medio AM



3593 Ischia - ciclopedonale asimmetrico CA

1478 - Palo Urban da interrare

Codice: 425370-00



3593 Ischia MIDNIGHT - ciclopedonale asimmetrico CA



3596 Ischia - asimmetrico fascio largo AW



3595 Ischia - asimmetrico fascio medio AM



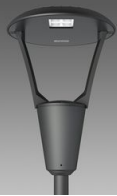
3360 Iseo 1 - rotosimmetrico



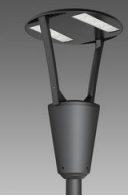
3361 Iseo 2 - stradale



3362 Iseo 3 - centro strada



3363 Iseo 4 - ciclabile



3383 Como 1 - rotosimmetrico



3384 Como 2 - asimmetrico



3385 Como 3 - ciclabile



3386 Como 4 - bi-asimmetrico



3350 Garda 1 - rotosimmetrico



3351 Garda 2 - asimmetrico



3352 Garda 3 - ciclabile



3353 Garda 4 - ciclabile + stradale



3355 Garda 5 - rotosimmetrico



3355 Garda 6 - rotosimmetrico



3340 Loto 1 - diffondente trasparente



3340 Loto 2 - diffondente satinato



3342 Loto 3 - asimmetrico



3343 Loto 4 - ciclabile



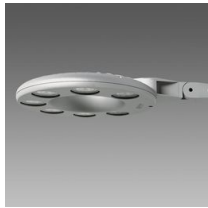
3344 Loto 5 - diffondente



3345 Loto 6 - COB



3345 Loto 6 - MIDNIGHT COB



3331 Disco 2 - diffondente



3334 Disco 5 - attacco centrale



3336 Visconti 2.0 - rotosimmetrico



3337 Visconti 2.0 - stradale ME



3338 Visconti 2.0 - ciclabile



3339 Visconti 2.0 - grandi aree



3580 Volo - stradale - High Performance



3581 Volo - ciclabile + stradale



3582 Volo - ciclabile



3583 Volo - rotosimmetrico



3290 Sella 1 - ST



3291 Sella 1 - STWB



3292 Sella 1 - asimmetrico 45°



3293 Sella 1 - asimmetrico 60°



3294 Sella 1 - piste ciclabili



3295 Sella 1 - grandi aree



3296 Sella 1 - HP



3297 Sella 1 - HP -attraversamenti pedonali SX



3298 Sella 1 - HP -attraversamenti pedonali DX



3390 Sella 2 - ST



3391 Sella 2 - STWB



3392 Sella 2 - asimmetrico 45°



3393 Sella 2 - asimmetrico 60°



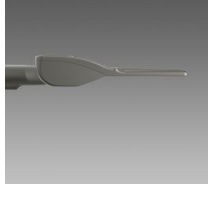
3395 Sella 2 - grandi aree



3396 Sella 2 - HP



3476 Mini Giovi W2 - stradale




3477 Mini Giovi N1 - ciclabile



3478 Mini Giovi M1 - stradale




3479 Mini Giovi T4 - grandi aree



3480 Mini Giovi - high performance - grandi aree



3481 Mini Giovi - high performance - stradale ME




3482 Mini Giovi - high performance - ciclabile




3483 Mini Giovi AMBRA - grandi aree




3484 Mini Giovi AMBRA - stradale ME




3485 Mini Giovi AMBRA - ciclabile



3486 Mini Giovi sinistro (SX)-attraversamenti pedonali



3487 Mini Giovi destro (DX)-attraversamenti pedonali




3472 Giovi M1 - stradale




3473 Giovi W1 - stradale




3474 Giovi M2 - stradale




3490 Giovi - high performance - grandi aree




3491 Giovi - high performance - stradale ME



3492 Giovi AMBRA T4 - grandi aree




3493 Giovi AMBRA - stradale ME



3494 Giovi T4 - asimmetrico - grandi aree



3495 Giovi W2 - stradale




3496 Giovi - sinistro (SX)-attraversamenti pedonali




3497 Giovi - destro (DX)-attraversamenti pedonali



3269 Mini Stelvio FX T5 - diffondente




3277 Mini Stelvio FX T2 - stradale




3278 Mini Stelvio FX T3 - diffondente stradale




3279 Mini Stelvio FX T4 - asimmetrico




3375 Mini Stelvio - high performance - stradale



3376 Mini Stelvio - high performance - grandi aree




3270 Stelvio 1 - Plus - LED




3274 Stelvio 2 - Plus - LED asimmetrico




3370 Stelvio - high performance - stradale



3374 Stelvio - high performance - grandi aree




1518 Klima LED anti-inquinamento luminoso



1570 Klima - LED



1513 Torcia LED COB



1707 Torcia LED