

Binario 48V DC MICRO P: parete plafone

Codice: 22960030-00

INFORMAZIONI GENERALI



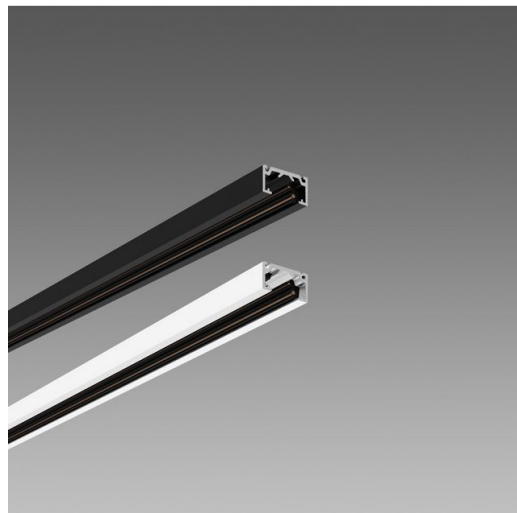
Articolo	Binario 48V DC MICRO P: parete plafone
Codice	22960030-00

DIMENSIONI E PESO

Lunghezza (mm)	1000 mm
Larghezza (mm)	19 mm
Altezza (mm)	10 mm

CARATTERISTICHE ELETTRICHE E CONTROLLI

Sigla cablaggio	S
-----------------	---



Lunghezza max. consentita in fila continua: 50m. Portata max. 100W. 3 fissaggi ogni metro.



Binario 48V DC MICRO P: parete plafone

Codice: 22960030-00



Binario 48V DC MICRO P: parete plafone

Codice: 22960030-00

MATERIALI E COLORI

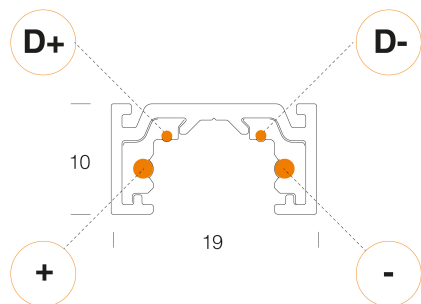
Corpo	In alluminio estruso con conduttori in rame.
Colore	Nero

NORME E CONFORMITÀ

Norme di riferimento	EN60598-1. Hanno grado di protezione secondo la norma EN60529.
----------------------	--

GARANZIA

Garanzia post-vendita	3 yr
-----------------------	------



DOWNLOAD

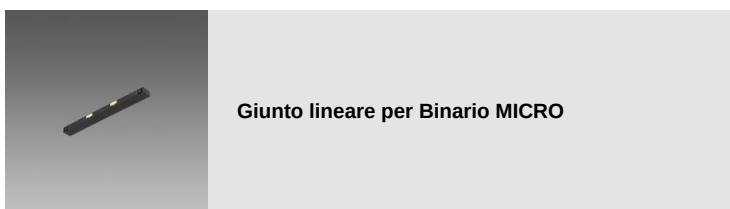
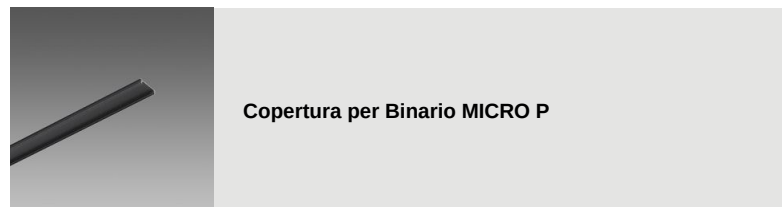
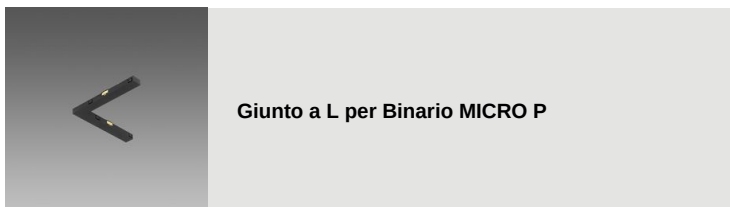
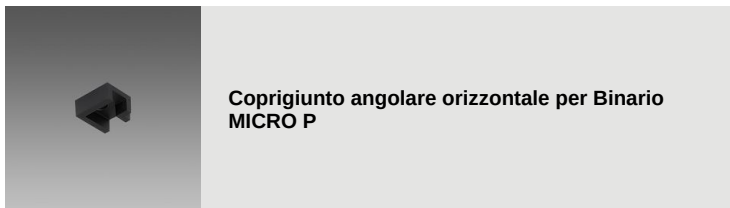
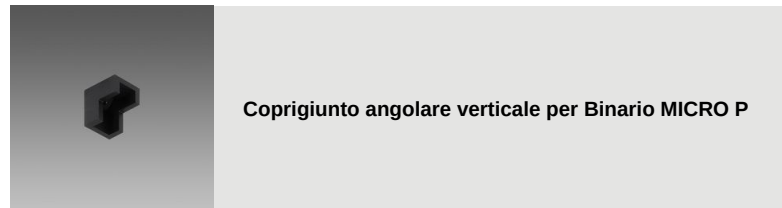
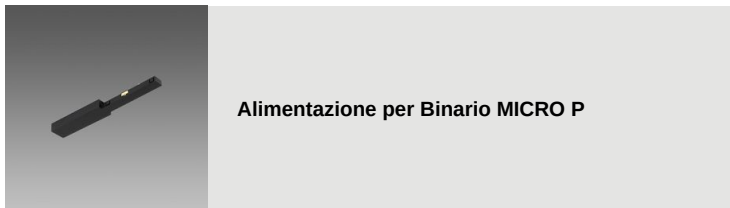
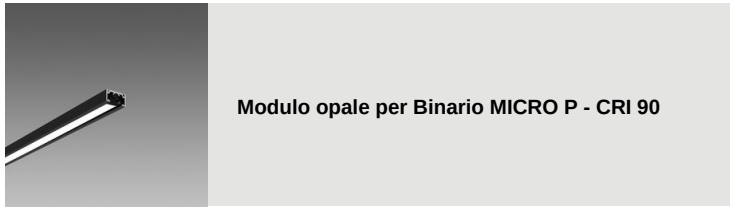
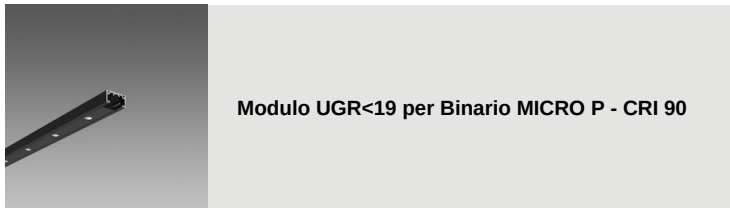
DISEGNI

DisegnoTecnico microp.dxf



Binario 48V DC MICRO P: parete plafone

Codice: 22960030-00



Binario 48V DC MICRO P: parete plafone

Codice: 22960030-00

Curva soffitto/parete R290 per Binario MICRO P